



## SOUTHEAST ALASKA POWER AGENCY

### Regular Board Meeting AGENDA

The Nolan Center | Wrangell, Alaska

November 1, 2016 | 1:00 p.m. to 5:00 p.m. AKDT  
November 2, 2016 | 9:00 a.m. to 1:00 p.m. AKDT

**For Telephonic Participation: Dial 1-800-315-6338 (Access Code: 73272#)**

1. Call to Order
  - A. Roll Call
  - B. Communications/Lay on the Table Items
  - C. Disclosure of Conflicts of Interest
2. Approval of the Agenda
3. Persons to be Heard
4. Review and Approve Minutes
  - A. September 8, 2016 Minutes of Regular Board Meeting
5. Financial Reports
  - A. CEO Financial Cover Memo
  - B. Controller's Report
  - C. kWh Graph - September 2016
  - D. Grant Summary
  - E. Financial Statements – September 2016
  - F. Financial Statements – August 2016
  - G. R&R Reports
  - H. Disbursement Approvals – September and October 2016
6. CEO Report
7. Staff Reports
  - A. Operations Manager Report, including Tyee & Swan Lake Reports (*Henson*)
  - B. Director of Special Projects Report (*Wolfe*)
  - C. Power Systems Specialist Report (*Schofield*)
8. New Business
  - A. Consideration and Approval of Retirement Security Plan Prepayment
  - B. Executive Session
  - C. Next Meeting Dates
9. Director Comments
10. Adjourn



**SOUTHEAST ALASKA POWER AGENCY**

**Minutes of Regular Meeting**

September 8, 2016

Best Western Plus Landing Hotel  
Ketchikan, Alaska

(An audio recording of this meeting is available on SEAPA’s website at [www.seapahydro.org](http://www.seapahydro.org))

**1) Call to Order**

A. *Roll Call.* Chairman John Jensen called the meeting to order at 9:00 a.m. AKDT on September 8, 2016. The following directors and alternates were present, thus establishing a quorum of the board:

<b>Director</b>	<b>Alternate</b>	<b>Representing</b>	
Lew Williams <sup>1</sup>	Andy Donato	Swan Lake	Ketchikan
Judy Zenge	Charles Freeman	Swan Lake	Ketchikan
Joe Nelson	Mark Jensen	Tyee Lake	Petersburg
John Jensen		Tyee Lake	Petersburg
Stephen Prysunka	Clay Hammer	Tyee Lake	Wrangell

The following SEAPA staff/counsel were present for all or part of the meeting:

Trey Acteson, Chief Executive Officer	Eric Wolfe, Director of Special Projects
Kay Key, Controller	Ed Schofield, Power System Specialist
Sharon Thompson, Executive Assistant	Lisa Maddocks, Administrative Assistant
Joel Paisner, Ascent Law Partners, LLC	

B. *Communications/Lay on the Table Items* – None.

C. *Disclosure of Conflicts of Interest* – None.

**2) Approval of the Agenda**

➤ <b>Motion</b>	M/S (Nelson/Prysunka) to amend the agenda to add a new Item E for an evaluation of the CEO under New Business and renumber the remaining agenda items accordingly. Mr. Acteson clarified that although an evaluation is not listed on the agenda, the memo regarding an executive session included discussion of an evaluation of the CEO. It was determined the topic could be discussed in both venues. Motion approved unanimously by polled vote.	Action 17-527
➤ <b>Motion</b>	M/S (Nelson/Prysunka) to approve the agenda, as amended. Motion approved unanimously by polled vote.	Action 17-528

<sup>1</sup> Mr. Williams was not present at the time the roll was called but did join the meeting at 9:10 a.m.

3) **Persons to be Heard** – None.

4) **Review and Approve Minutes**

➤ <b>Motion</b>	M/S (Donato/Prysunka) to approve the Minutes of the Regular Meeting of April 28, 2016. Motion approved unanimously by polled vote.	<b>Action 17-529</b>
-----------------	--	--------------------------

5) **Financial Reports**

(A)-(H) Mr. Acteson reported that SEAPA's financial position is stable. He reviewed the Agency's revenue and expenses, grants, renewal and replacement projects, and discussed a billing from the State of Alaska that was double the amount anticipated for Wrangell's PERS unfunded liability associated with employees that joined SEAPA following SEAPA's assumption of operations at Tyee. Staff was directed to review the agreement with PERS on whether SEAPA is responsible for payment of all employees that were at Tyee prior to SEAPA's assumption of the O&M or just specific employees. Following the discussion, the Chairman requested a motion on the financial statements.

➤ <b>Motion</b>	M/S (Williams/Zenge) to approve the financial statements for the months of May, June, and July 2016. Motion approved unanimously by polled vote.	<b>Action 17-530</b>
-----------------	--	--------------------------

➤ <b>Motion</b>	M/S (Williams/Prysunka) to approve disbursements for the months of June, July, and August 2016 in the amount of \$4,769,784.27. Motion approved unanimously by polled vote.	<b>Action 17-531</b>
-----------------	---	--------------------------

6) **CEO Report**

Mr. Acteson announced the leadership changes that had taken place at the Alaska Energy Authority (AEA) and advised that given the dismal fiscal climate in the State, that the AEA would not be issuing a Renewable Energy Fund request for applications for Round 10. He had the opportunity to discuss SEAPA's future challenges and ongoing legislation with Senators Murkowski and Stedman, and financing mechanisms with Senator Murkowski's chief of staff. He provided updates on SB 2012, FERC's land use fee increase, the Tongass Forest Plan amendment, and reported that the Department of Energy issued a comprehensive report in how hydropower is viewed at the federal level and advised that the report coincides with other legislative initiatives that may benefit the hydro industry. Mr. Acteson reviewed public relations activities that had taken place and provided the highlights of an insurance conference he had attended. He closed his report with updates on legal counsel items and best practices and process improvements. He advised that staff is rewriting SEAPA's Employee Handbook. He also advised that he would be presenting a staffing review and succession plan to the board during the executive session in an effort to proactively address anticipated employee attrition.

The meeting recessed at 10:34 a.m. and reconvened at 10:55 a.m.

7) **Staff Reports**

**A. Operations Manager Report (Steve Henson).** Mr. Wolfe reported on behalf of Mr. Henson, who was absent from the meeting. He provided a brief summary of several projects noting the Roof and Siding Project on the Tyee crew housing was complete, bids were received on the Marker Balls Project which he noted will be discussed under New Business in the agenda, work will be ongoing for the Satellite Communications System over the next few weeks, that SEAPA had retained a contractor for the

engineering and design phase of the CTs-Relay Wrangell Circuit Switcher, and that the STI Helipad Project is complete. He also provided an update on Tye Lake and Swan Lake activities.

**B. Director of Special Projects (Wolfe).** Mr. Wolfe opened his report with a PowerPoint presentation focused on the Swan Lake Reservoir Expansion Project. He showed several photographs of the project's activities and recapped the schedule from when the model testing was done in April 2015 to the present, noting that building the center pier is the critical path to the finish line. He noted that if the vertical gate is installed in the next three weeks that civil construction will be almost complete. He displayed a graph showing water levels at the dam from 2013 to the present explaining where the levels are today, past levels, and what SEAPA's goal is as it moves forward with the project.

**C. Power System Specialist Report (Schofield).** Mr. Schofield reported that Swan Lake's debris boom failed in 2015 and that following issuance of a Request for Proposals, bids were received for a new boom system, which would be discussed under New Business in the Agenda. Mr. Schofield updated the board on FERC-related activities and explained that most of his time had been spent on the Swan Lake Reservoir Expansion Project. He noted that FERC inspected the Swan Lake project on July 26 and no items of concern were reported following the inspection. He advised that the State's Logging Plan, which was one of FERC's license amendment conditions, had been submitted to FERC and that final approval can be granted once FERC receives a settlement agreement between SEAPA and the Forest Service for the estimated value of the standing timber. Mr. Schofield discussed the various efforts involved in management of the rare and invasive plants at Swan Lake and noted the several photographs of the plant species in his board packet report. He closed his report recapping the events of the failure of the first Load Bank at Swan Lake and the efforts involved in getting a new Load Bank to help control the water levels for the project.

The meeting recessed at 11:52 a.m. for lunch and reconvened at 1:00 p.m.

**8) New Business**

- A. *Consideration, and Approval of Contract Award for Tye Transmission Line Marker Ball Replacement Project.*

Chairman Jensen requested a motion on the project.

<b>➤ Motion</b>	M/S (Prysunka/Zenge) to enter into a contract with Northern Powerline Constructors, Inc. for SEAPA's R&R Project 265-16 for the Tye Transmission Line Marker Ball Replacement Project for the not-to-exceed value of \$588,650.50. Following discussion, the motion was unanimously approved by a polled vote.	<b>Action 17-532</b>
-----------------	--	--------------------------

- B. *Consideration and Approval of Contract Award for Swan Lake Reservoir Expansion Debris Boom Project.*

Following distribution of a handout on the debris boom project, Chairman Jensen noted there were two suggested motions related to the project in the handout and requested a motion accordingly.

<b>➤ Motion</b>	M/S (Prysunka/Williams) to designate the Swan Lake Debris Boom Project as a new Replacement and Renewal (R&R) Project in SEAPA's FY2017 R&R Budget and authorize \$284,000 funding for the project, and also to authorize staff to enter into a Purchase Order Contract with Worthington Products, Inc. for SEAPA's Swan Lake Debris Boom Project	<b>Action 17-533</b>
-----------------	---	--------------------------

for the not-to-exceed value of \$172,648. Following discussion of the project by Mr. Acteson and an explanation of an appeal that had been received, the motion was approved unanimously by polled vote.

C. *Review of Employee Benefits Plan FY17 Renewal Rates*

Chairman Jensen requested a motion.

➤ **Motion**

M/S (Williams/Zenge) to renew NRECA employee group benefit plans as presented. Following a summary by Mr. Acteson of the plan presented in the board packet, the motion was approved unanimously by polled vote.

Action  
17-534

D. *Surplus Power Sales Discussion*

Mr. Acteson explained that staff investigated the possibility of surplus power sales following encouragement from the board to seek ways to increase revenue. He gave an example scenario of sales and demonstrated benefits beyond generating more revenue that could be realized. He advised that after reaching out to all three communities on the matter, that Wrangell indicated they may have an interest. He recapped water management challenges that would be introduced as a result of these types of sales but also noted the opportunities realized if water conditions supported them. After fielding several questions from the board, Mr. Acteson encouraged the board to review sample agreements provided in the board packet and how they might apply to their respective communities.

E. *CEO Evaluation*

Staff was directed to provide various evaluation forms for the board's consideration for a follow-up evaluation of the CEO.

F. *Executive Session*

➤ **Motion**

M/S (Prysunka/Zenge) to recess into Executive Session to conduct further discussions relating to a review of the Agency's Tye Lake Hydroelectric Facility, an Annual Evaluation of SEAPA's Chief Executive Officer, succession planning, and grant related matters regarding the Kake-Petersburg Intertie. The Executive Session will be conducted pursuant to SEAPA's Bylaws which are consistent with Alaska Statute 44.62.310 as the discussions may include matters the immediate knowledge of which would clearly have an adverse impact upon the finances of the Agency, the Projects, or any of the Member Utilities represented on the Board, subjects that tend to prejudice the reputation and character of any person, and matters discussed with an attorney retained by the Board, the immediate knowledge of which could have an adverse effect on the legal position of the Agency. Motion approved unanimously by polled vote.

Action  
17-535

The meeting recessed at 2:08 p.m. for the executive session and reconvened into regular session at 4:42 p.m.

G. *Board Meeting Dates* – Mr. Acteson explained various options available for the remainder of calendar year 2016 for board meetings since the meeting that was scheduled for August was being held in September instead. Following discussion, the board determined that its next regular meeting would be held on December 13-14, 2016 in Wrangell and that a special board meeting may need to be requested by staff prior to the December meeting for any business considerations that may arise.

9) **Director Comments** – Directors provided brief comments.

10) **Adjourn**

Chairman Jensen adjourned the meeting at 5:00 p.m.

Signed:

Attest:

---

Secretary/Treasurer

---

Chairman



## SOUTHEAST ALASKA POWER AGENCY CEO FINANCIAL COVER MEMO

---

DATE: October 26, 2016  
TO: SEAPA Board of Directors  
FROM: Trey Acteson, CEO

---

SEAPA's financial position remains sound. The financial statements in your Board packets include September and August FY17.

BDO financial auditors are in the office this week and they should be ready to present the FY16 audited financials to the Board during our scheduled December 14<sup>th</sup> meeting.

### **REVENUE & EXPENSES:**

The budget tracked reasonably well during the first quarter of FY17.

Total power purchase revenues through the end of September were \$2,562,476 actual vs. \$2,616,581 budget. Estimated displaced sales from the Whitman True-up during this period were \$96,351.

Total administrative and operating expenses through the end of September were \$1,284,761 actual vs. \$1,549,785 budget. The bulk of this difference can be attributed to temporary deferment of transmission and plant maintenance during Swan construction.

### **GRANTS:**

Swan Lake Reservoir Expansion Project grant dollars are fully exhausted and that grant has been closed. An up-to-date Swan Lake financial summary is included at the back of the R&R section.

Kake-Petersburg Intertie Project expenditures have been minimal during the Final Record of Decision (ROD) comment/response period. TetraTech is addressing the last of the filings, which is required before the Final ROD can be signed. KWETICO has declined to renew the KPI#1 grant, so we have begun to draw on the KPI#2 grant. The existing KPI#2 grant is slated to expire at the end of December, so SEAPA has filed a request for a one year extension.

### **RENEWAL & REPLACEMENT PROJECTS:**

With the exception of the Swan Lake Reservoir Expansion Project, larger approved R&R project expenditures will mostly occur in the third and fourth quarters of FY17. The most notable being exciter and switchgear replacements at Swan Lake and replacement of 110 marker balls on the Tyee transmission line.

The contract for the Swan Lake debris boom fabrication has been executed.

Unanticipated expenditures on the Marine Terminal Gage Project (RR249) have carried into FY17 as shown in the R&R detail sheets. Staff will elaborate further at the meeting.

**NRECA RETIREMENT PRE-PAY OPTION:**

We have completed an in-depth review of a NRECA retirement contribution pre-payment option opportunity. The savings are substantial and will financially benefit the Agency over the next ten years. This item is a time sensitive issue and is described more fully under new business. I look forward to reviewing the details with the Board and recommend that we take advantage of this significant cost saving measure.





# SOUTHEAST ALASKA POWER AGENCY CONTROLLER MEMO

---

Date: **October 20, 2016**

From: **Kay Key**

To: **Trey Acteson**

Subject: **FINANCIAL STATEMENTS**

---

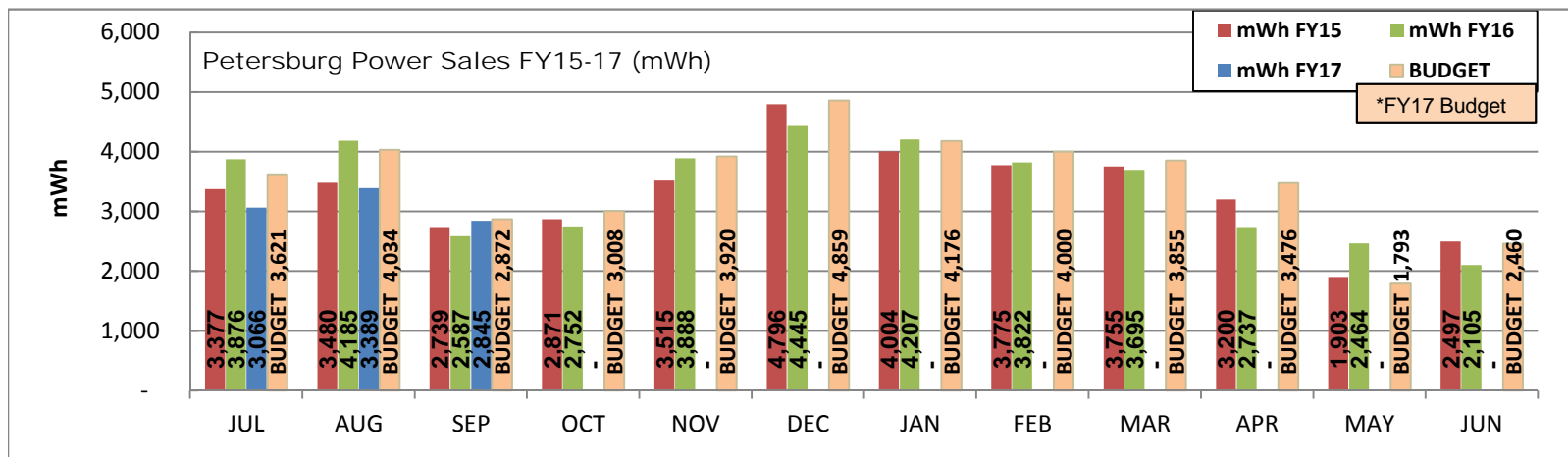
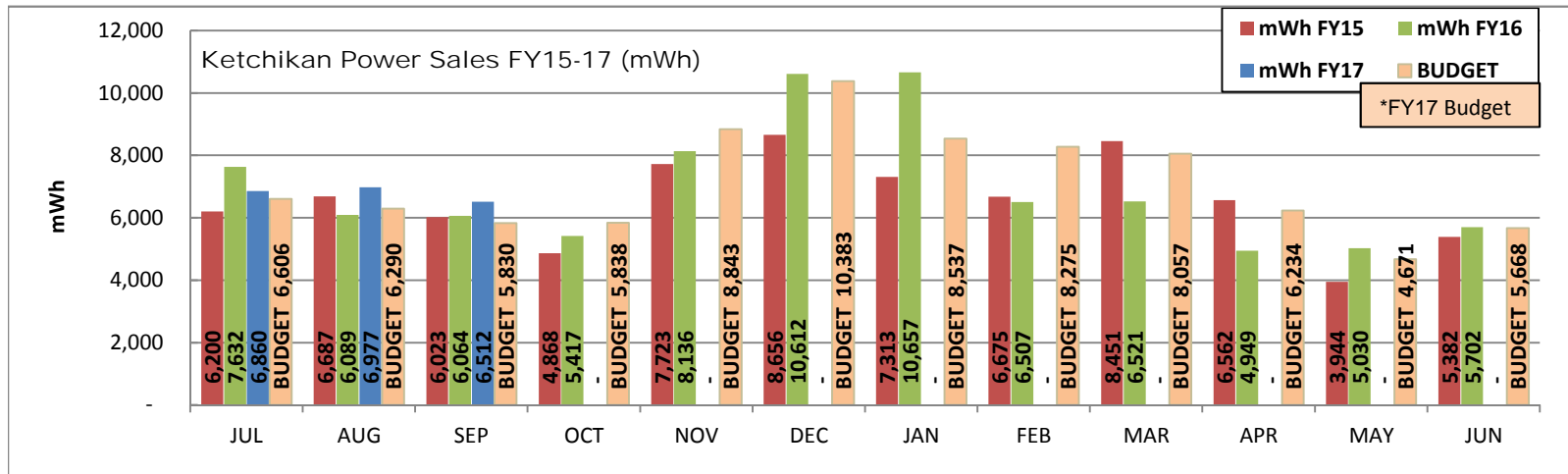
SUGGESTED MOTION
I move to approve financial statements for the months of August and September, 2016.

The following FY2017 financial reports are included in this board packet:

- **kWh Graph**
  - **Grant Summary**
  - **Monthly Financial Statements for September and August, 2016:**
    - ✓ Financial Overview
    - ✓ Fund Allocation Graph
    - ✓ Statement of Financial Position – Summary
    - ✓ Statement of Activities – Summary
    - ✓ Statement of Financial Position – Detail
    - ✓ Statement of Activities – Budget Comparison
  - **R&R Reports**  
(Summary, Invoice Details, Closed R&Rs, SWL Financial Summary)
- -- --
- **Disbursements:** A Suggested Motion for approval of September and October expenditures appears on the first page of the disbursements.

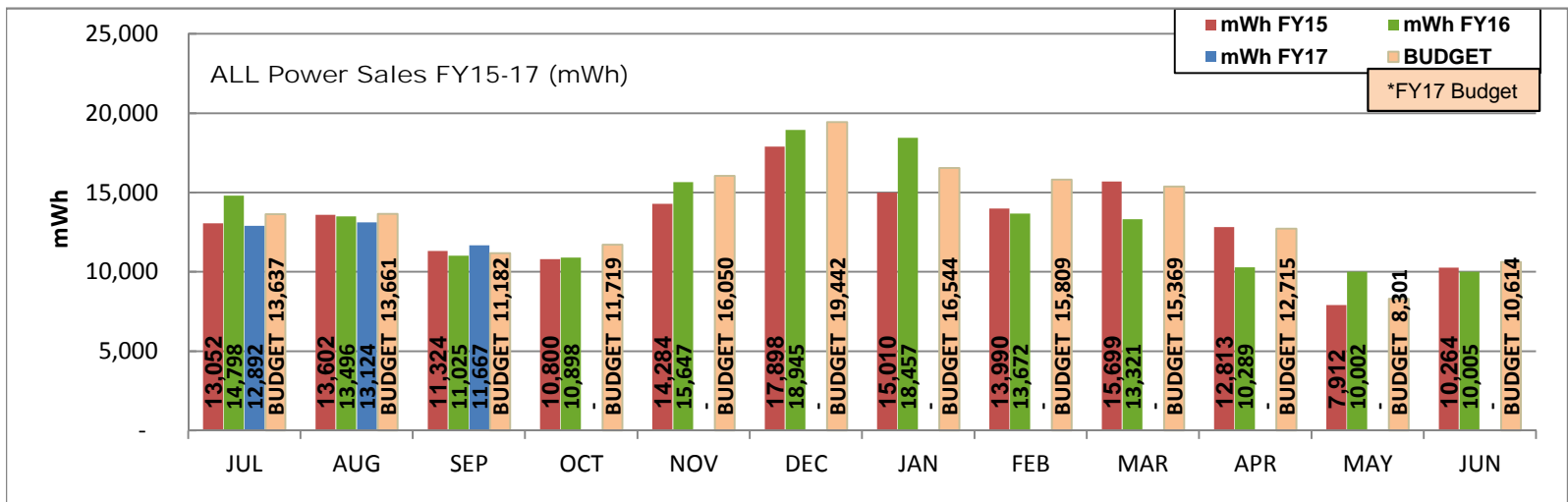
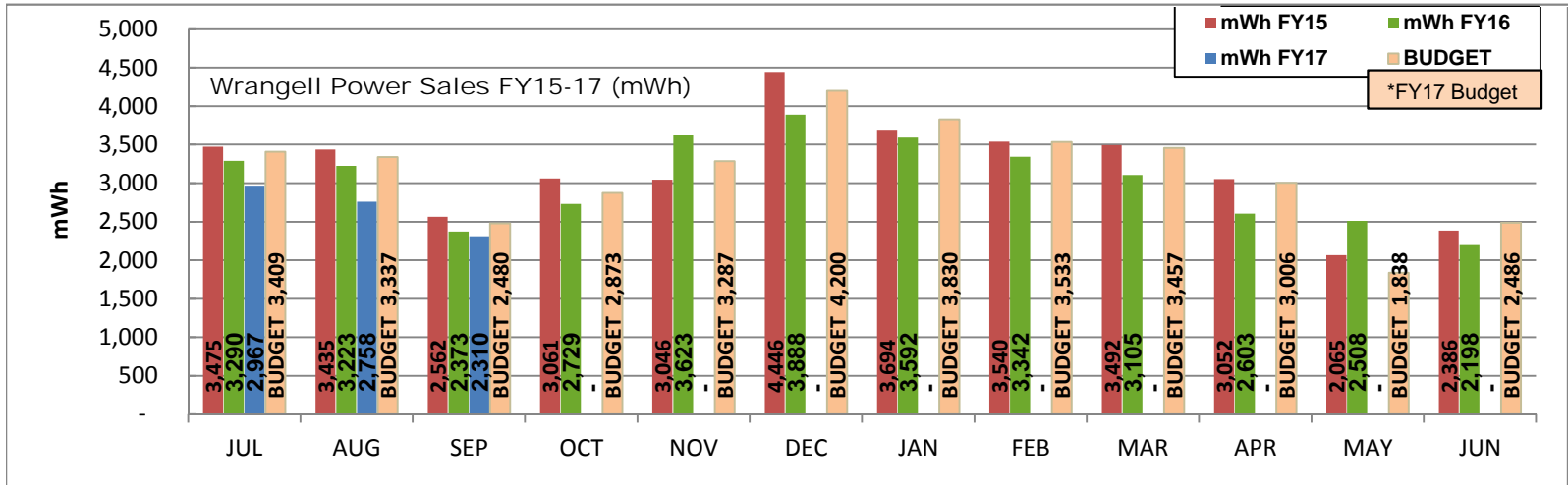
## SOUTHEAST ALASKA POWER AGENCY POWER SALES

SEP 2016	FY17 kWh Hydropower Sales	Current Month		Year-To-Date	
		Actual	Budget	Actual	Budget
	<b>Ketchikan Power Purchases</b>	6,511,936	5,830,312	20,348,832	18,726,488
<b>Petersburg Power Purchases</b>	2,845,194	2,871,961	9,300,250	10,527,020	
<b>Wrangell Power Purchases</b>	2,309,860	2,479,643	8,034,390	9,225,623	
<b>Total Power Purchases</b>	11,666,990	11,181,916	37,683,472	38,479,131	



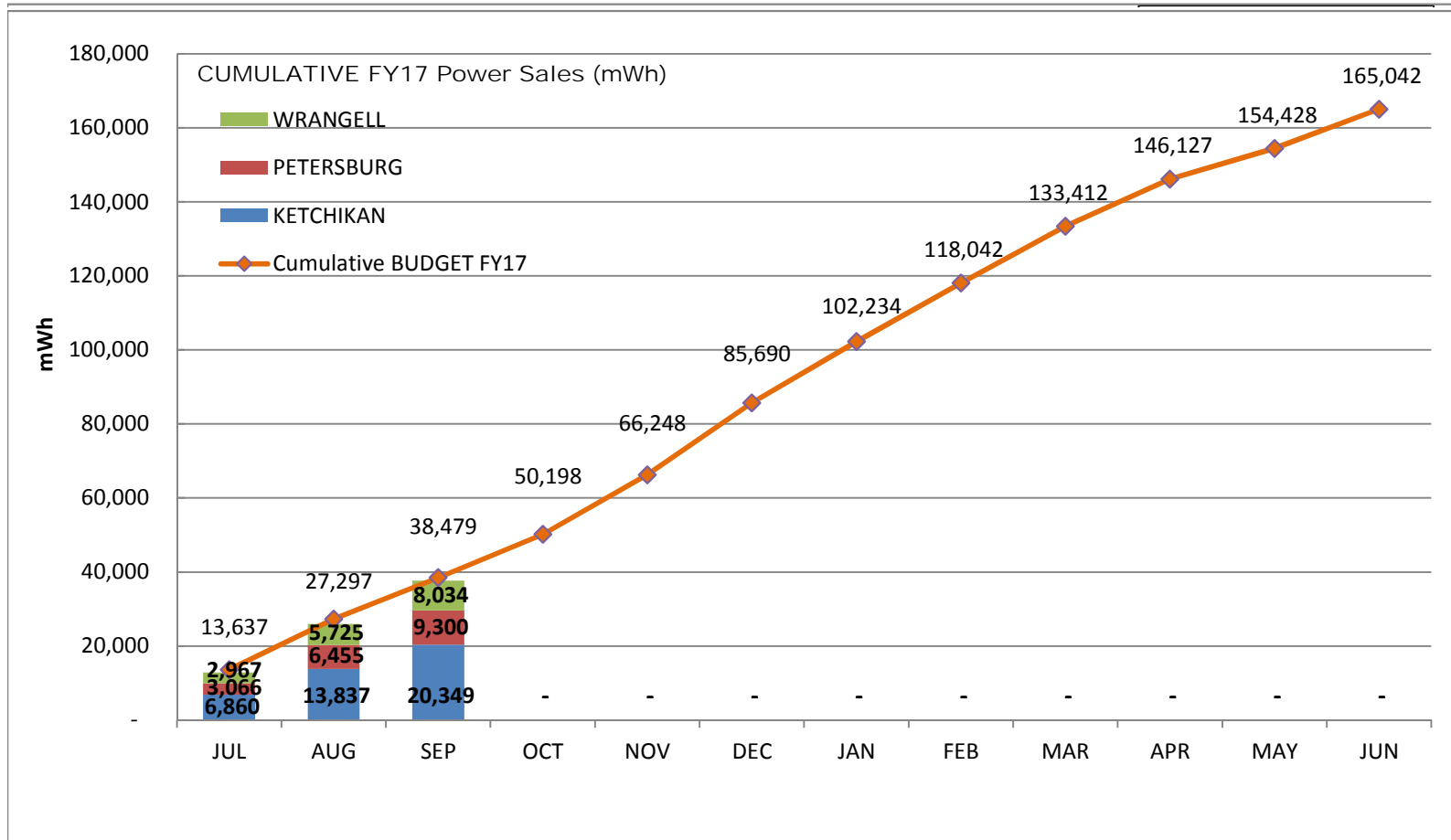
**SOUTHEAST ALASKA POWER AGENCY  
POWER SALES**

SEP 2016	FY17 kWh Hydropower Sales	Current Month		Year-To-Date	
		Actual	Budget	Actual	Budget
	<b>Ketchikan Power Purchases</b>	6,511,936	5,830,312	20,348,832	18,726,488
<b>Petersburg Power Purchases</b>	2,845,194	2,871,961	9,300,250	10,527,020	
<b>Wrangell Power Purchases</b>	2,309,860	2,479,643	8,034,390	9,225,623	
<b>Total Power Purchases</b>	11,666,990	11,181,916	37,683,472	38,479,131	



## SOUTHEAST ALASKA POWER AGENCY POWER SALES

SEP 2016	FY17 kWh Hydropower Sales	Current Month		Year-To-Date	
		Actual	Budget	Actual	Budget
	<b>Ketchikan Power Purchases</b>	6,511,936	5,830,312	20,348,832	18,726,488
<b>Petersburg Power Purchases</b>	2,845,194	2,871,961	9,300,250	10,527,020	
<b>Wrangell Power Purchases</b>	2,309,860	2,479,643	8,034,390	9,225,623	
<b>Total Power Purchases</b>	11,666,990	11,181,916	37,683,472	38,479,131	





**SOUTHEAST ALASKA POWER AGENCY**  
**FY17 GRANT SUMMARY**  
as of SEPTEMBER 30, 2016

**FY13 Alaska Energy Authority Kake-Petersburg Intertie Grant #2**

	<u>Grant Award</u>	<u>Expenditures</u>	<u>Balance</u>
KPI2 - EIS	32,000	3,592	28,408
KPI2 - Engineer-Design	1,743,000	-	1,743,000
KPI2 - Project Mgmt	225,000	653	224,347
<b>TOTAL</b>	<b>2,000,000</b>	<b>4,245</b>	<b>1,995,755</b>

**FY13 Alaska Dept. of Commerce, Community & Economic Development**

	<u>Grant Award</u>	<u>Expenditures</u>	<u>Balance</u>
1 - Hydro Storage	578,000	578,000	0
2 - G&T Site Evaluation	1,705,000	1,268,521	436,479
3 - Stability / Interconnectivity	146,000	0	146,000
4 - Load Balance Model	112,000	98	111,902
5 - Project Mgmt	309,000	255,712	53,288
6 - Business Analysis / PSA	150,000	48,015	101,985
<b>TOTAL</b>	<b>3,000,000</b>	<b>2,150,346</b>	<b>849,654</b>

**FY15 Alaska Dept. of Commerce, Community & Economic Development**

	<u>Grant Award</u>	<u>Expenditures</u>	<u>Balance</u>
Swan Lake Reservoir Expansion	3,320,000	3,320,000	0
<b>TOTAL</b>	<b>3,320,000</b>	<b>3,320,000</b>	<b>0</b>

<b>TOTAL ACTIVE GRANTS</b>	<b>8,320,000</b>	<b>5,474,590</b>	<b>2,845,410</b>
----------------------------	------------------	------------------	------------------



## SEPTEMBER 2016 FINANCIAL OVERVIEW

The following tables provide a snapshot of SEAPA's revenues and expenses for SEPTEMBER, 2016.

SEPTEMBER, 2016 revenues from kWh sales were slightly over budget:

FIRM kWh SALES	SEPTEMBER Actual	SEPTEMBER Budget	Prior Year Actual
Ketchikan	\$442,812	\$396,461	\$412,348
Petersburg	\$193,473	\$195,293	\$175,942
Wrangell	\$157,070	\$168,616	\$161,381
<b>Total Revenue</b>	<b>\$793,355</b>	<b>\$760,370</b>	<b>\$749,671</b>

Year-to-date revenues (JUL - SEP) from kWh sales are under budget:

FIRM kWh SALES	YTD Actual	YTD Budget	Prior Yr Actual
Ketchikan	\$1,383,721	\$1,273,401	\$1,345,344
Petersburg	\$632,417	\$715,837	\$724,103
Wrangell	\$546,339	\$627,343	\$604,262
<b>Total Revenue</b>	<b>\$2,562,476</b>	<b>\$2,616,581</b>	<b>\$2,673,709</b>

kWh SALES (3 years)	FISCAL YEAR	SEPTEMBER	YTD JUL-SEP
	2017	11,666,990	37,683,472
	2016	11,024,569	39,319,254
	2015	11,323,960	37,977,700

Administrative and operating expenses were under budget for SEPTEMBER.

Administrative & Operating Expenses	SEPTEMBER Actual	SEPTEMBER Budget	Prior Yr Actual
	\$397,877	\$515,655	\$489,742
	YTD Actual	YTD Budget	Prior YTD Actual
	\$1,284,761	\$1,549,785	\$1,508,968

**AGENCY FUNDS**

Operations, Capital and Insurance Funds

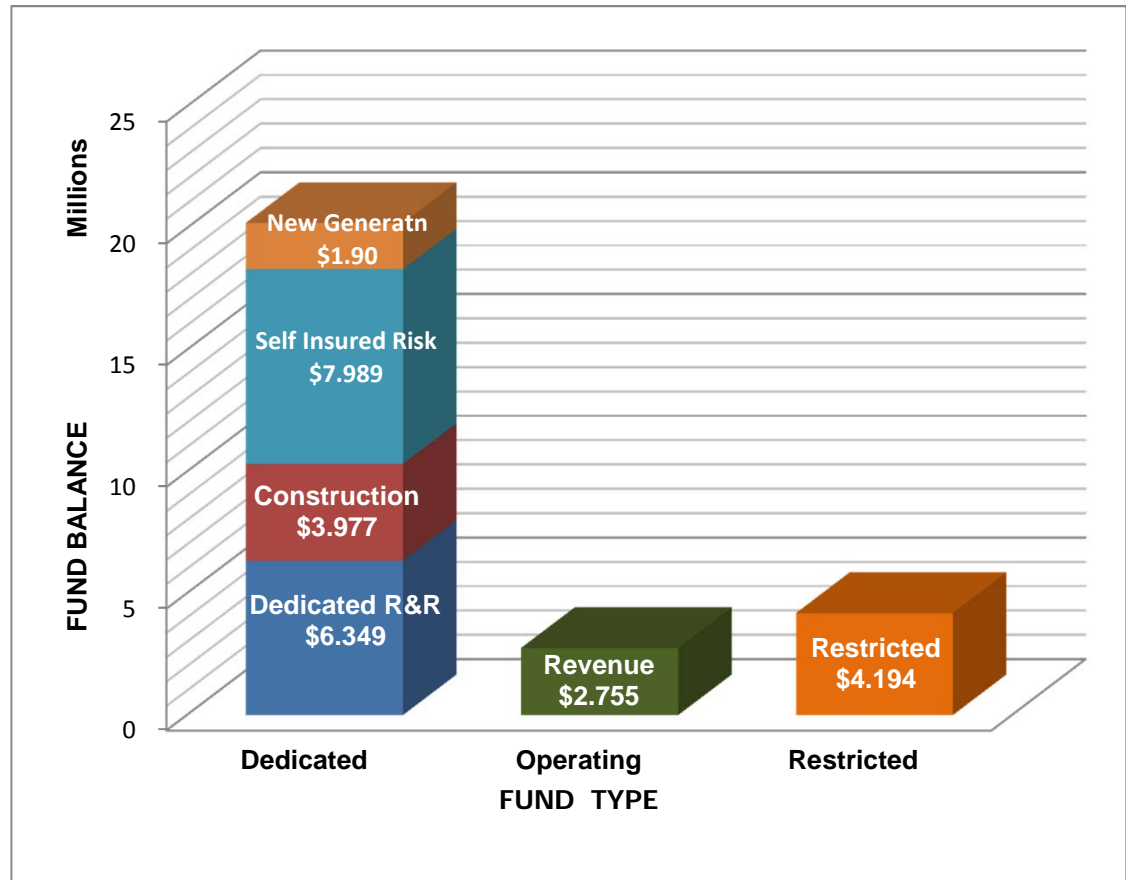
Revenue Fund FB	\$ 2,753,627
Required R&R Fund FB	1,000,204
Dedicated R&R Projects Fund FB	6,349,059
Construction Fund FB	3,977,481
Commercial FB	1,000
New Generation Fund	1,898,132
Self Insured Risk Fund FNBA	7,989,301
<b>Total Operations, Capital and Insurance Funds</b>	<b>23,968,804</b>

Trustee Funds

2009 Bond Interest	\$ 138,754
2009 Bond Principal	320,838
2009 Bond Reserve	1,410,251
2015 Bond Interest	162,564
2015 Bond Reserve	212,820
<b>Total Trustee Funds</b>	<b>2,245,227</b>

Other Restricted Funds

STI - USFS CD WF	\$ 21,623
DNR Reclamation Fund WF	927,269
<b>Total Other Restricted Funds</b>	<b>948,891</b>
<b>Total Agency Funds</b>	<b>\$ 27,162,923</b>



Dedicated Funds

- New Generation = Project feasibility funding (hydro, wind, geothermal)
- Self-Insured Risk = Coverage for uninsured transmission lines, submarine cables and insurance deductibles.
- Construction Fund = 2015 bond proceeds dedicated to Swan Lake Reservoir Expansion project.
- Dedicated R&R = Funds Replacement & Repair projects approved by the SEAPA Board in the budget.

Operating Funds

Revenue Fund & Commercial Checking: All SEAPA income is deposited to the Revenue Fund as required by Bond Indentures.

Restricted Funds (Legally or contractually restricted)

- Bonds = All Trustee Funds: Bond Interest, Principal, Reserve and Escrow accounts
- R&R = \$1,000,000 minimum balance required by bond indenture
- DNR = Alaska DNR Reclamation Agreement
- USFS = USFS Land Remediation Certificate of Deposit

**SOUTHEAST ALASKA POWER AGENCY**  
**Statement of Financial Position - Summary Prior Year Comparison**  
**as of SEPTEMBER 30, 2016**

	SEP 30, 2016	SEP 30, 2015
<b>ASSETS</b>		
<b>Current Assets</b>		
<b>Agency Funds</b>		
111000 · Ops/Capital/Insurance Funds	23,968,804	27,828,936
112000 · Trustee Funds	2,245,227	2,274,443
113000 · Other Restricted Funds	948,891	873,886
<b>Total Agency Funds</b>	27,162,923	30,977,265
<b>Accounts Receivable</b>		
110000 · Accounts Receivable	1,412,131	1,033,523
110010 · Unbilled Displaced Sales	326,905	235,420
110100 · Grants Receivable	4,245	140,807
<b>Total Accounts Receivable</b>	1,743,280	1,409,751
<b>Other Current Assets</b>		
120200 · Other Receivables	4,606	4,606
120300 · Accrued Interest Receivable	20,967	(5,373)
120500 · Prepaid Fees	542,998	489,324
120700 · Inventory Assets	944,809	952,952
<b>Total Other Current Assets</b>	1,513,379	1,441,508
<b>Total Current Assets</b>	30,419,582	33,828,524
<b>Fixed Assets</b>		
130100 · Capital Assets	162,102,073	156,307,967
132200 · R&R Projects WIP Capital Improv	9,990,697	6,126,953
132900 · Accumulated Depreciation	(36,944,216)	(32,766,947)
<b>Total Fixed Assets</b>	135,148,554	129,667,974
<b>Other Assets</b>		
183000 · Deferred Assets	390,380	481,024
<b>Total Other Assets</b>	390,380	481,024
<b>TOTAL ASSETS</b>	<b>165,958,516</b>	<b>163,977,521</b>
<b>LIABILITIES &amp; EQUITY</b>		
<b>Liabilities</b>		
<b>Current Liabilities</b>		
Accounts Payable		
210100 · Accounts Payable General	1,421,525	1,350,111
Total Accounts Payable	1,421,525	1,350,111
Other Current Liabilities		
210151 · Member Utility Rebate Payable	800,000	1,500,000
210152 · DNR Fund - CVEA KEA Portion	300,000	262,500
210300 · Reserve Interest Payable	273,545	297,871
210400 · Wages Payable	244,001	166,746
210500 · Payroll Liabilities	26,682	9,697
Total Other Current Liabilities	1,644,228	2,236,814
<b>Total Current Liabilities</b>	3,065,753	3,586,925
<b>Long Term Liabilities</b>		
220100 · Series B Bonds 2009	7,160,000	7,905,000
220120 · 2009 Bond Issuance Discount	(30,842)	(35,200)
220121 · PERS Unfunded Liability WRG	1,077,322	488,768
220130 · Series 2015 Bonds	10,295,000	10,295,000
220131 · 2015 Bond Issuance Premium	917,638	977,285
<b>Total Long Term Liabilities</b>	19,419,118	19,630,852
<b>Total Liabilities</b>	22,484,871	23,217,777
<b>Net Position</b>		
310000 · Net Position	142,684,744	140,879,386
Net Income	788,900	(119,642)
<b>Total Net Position</b>	143,473,645	140,759,744
<b>TOTAL LIABILITIES &amp; NET POSITION</b>	<b>165,958,516</b>	<b>163,977,521</b>



**SOUTHEAST ALASKA POWER AGENCY**  
**Statement of Activities - Summary Prior Year Comparison**  
**SEPTEMBER 2016**

	SEP 2016	SEP 2015
<b>Operating Income/Expense</b>		
<b>Operating Income</b>		
410000 · Hydro Facility Revenues	793,355	749,671
<b>Total Operating Income</b>	793,355	749,671
<b>Operating Expense</b>		
535000 · Hydro Ops-Suprvsn & Engineering	888	17,047
538000 · Electric Expenses	2,496	33,033
539000 · Misc Power Generation Expense	47,886	34,476
540000 · Rents	15,176	10,803
541000 · Hydro Power Station Maintenance	2,895	8,212
544000 · Maintenance of Electric Plant	98,110	103,029
545000 · Plant Miscellaneous Maintenance	969	2,846
561000 · Control System Maintenance	401	8,235
562000 · Trans/Operations Station Exp	1,433	665
564000 · Trans/Submarine Cable Expense	1,606	-
571000 · Trans/Maint Overhead Lines(OHL)	18,311	35,169
920000 · Admin Wages & Benefits	129,074	113,524
921000 · Office Expenses	11,494	34,467
922000 · Legislative Affairs	4,000	4,000
923000 · Contract Services	10,847	25,133
924000 · Insurance	38,268	39,572
928000 · Regulatory Commission Expense	5,788	6,657
930000 · General Expenses	2,034	6,104
931000 · Admin Rent	6,204	6,769
<b>Total Operating Expense</b>	397,877	489,742
<b>Net Operating Income</b>	395,478	259,929
<b>Non-Operating Income/Expense</b>		
<b>Non-Operating Income</b>		
941000 · Grant Income	177,730	148,237
942000 · Interest Income	(8,413)	7,856
944000 · Realized Gain/Loss	3,135	(9,325)
945000 · Unrealized Gain/Loss	446	77,551
<b>Total Non-Operating Income</b>	172,898	224,319
<b>Non-Operating Expense</b>		
952000 · Bond Interest 2009 Series	29,642	30,512
952001 · Bond Interest 2015 Series	36,052	41,697
953000 · Depreciation Expense	358,885	339,212
954000 · Grant Expenses	343	203,783
954100 · Contributed Capital	-	(124,670)
<b>Total Non-Operating Expense</b>	424,922	490,534
<b>Net Non-Operating Income</b>	(252,024)	(266,215)
<b>Net Change in Financial Position</b>	<b>143,454</b>	<b>(6,287)</b>

**SOUTHEAST ALASKA POWER AGENCY**  
**Statement of Financial Position - Detail**  
**as of SEPTEMBER 30, 2016**

**ASSETS**

**Current Assets**

**Agency Funds**

**111000 · Ops/Capital/Insurance Funds**

111100 · Revenue Fund FB	2,753,627
111200 · Required R&R Fund FB	1,000,204
111210 · Dedicated R&R Projects Fund FB	6,349,059
111211 · Construction Fund FB	3,977,481
111300 · Commercial FB	1,000
111401 · New Generation Fund	1,898,132
111500 · Self Insured Risk Fund FNBA	7,989,301

**Total 111000 · Ops/Capital/Insurance Funds** 23,968,804

**112000 · Trustee Funds**

112100 · WF Trust 2009 Bond Interest	138,754
112200 · WF Trust 2009 Bond Principal	320,838
112300 · WF Trust 2009 Bond Reserve	1,410,251
112501 · WF Trust 2015 Bond Interest	162,564
112503 · WF Trust 2015 Bond Reserve	212,820

**Total 112000 · Trustee Funds** 2,245,227

**113000 · Other Restricted Funds**

113100 · STI - USFS CD WF	21,623
113500 · DNR Reclamation Fund WF	927,269

**Total 113000 · Other Restricted Funds** 948,891

**Total Agency Funds** 27,162,923

**Accounts Receivable**

110000 · Accounts Receivable	1,412,131
110010 · Unbilled Displaced Sales	326,905
110100 · Grants Receivable	4,245

**Total Accounts Receivable** 1,743,280

**Other Current Assets**

**120200 · Other Receivables** 4,606

**120300 · Accrued Interest Receivable** 20,967

**120500 · Prepaid Fees**

120520 · Prepaid Insurance	445,351
120530 · Prepaid Operating Expense	1,125
120540 · Prepaid USDA FS Land Use Fees	24,296
120550 · Prepaid Admin Benefits	72,226

**Total 120500 · Prepaid Fees** 542,998

**120700 · Inventory Assets**

120702 · Inventory - Marker Balls	54,404
1328101 · Inventory-SWL Winding Replacmnt	890,405

**Total 120700 · Inventory Assets** 944,809

**Total 120000 - Other Current Assets** 1,513,379

**Total Current Assets** 30,419,582

**SOUTHEAST ALASKA POWER AGENCY**  
**Statement of Financial Position - Detail**  
**as of SEPTEMBER 30, 2016**

**Fixed Assets**

**130100 · Capital Assets**

130110 · Swan Lake	17,697,748
130120 · Tye Lake	29,329,001
130130 · SEAPA Office	800,871
132100 · Swan Tye Intertie in Operation	114,274,453

**Total 130100 · Capital Assets** 162,102,073

**132200 · R&R Projects WIP Capital Improv**

**132210 · R&R Projects - WIP Swan Lake**

1322100 · R&R WIP SWL- Reservoir Increase	
1322101 · WIP SWL Agency Permits/Environm	1,000,157
1322102 · WIP SWL Construction	3,625,674
1322103 · WIP SWL Equipment	1,009,062
1322104 · WIP SWL Engineering/Design	1,556,424
1322105 · WIP SWL Legal	68,312
1322106 · WIP SWL Project Mgmt/Professnal	318,762

**Total 1322100 · R&R WIP SWL- Reservoir Increase** 7,578,390

132210 · R&R Projects - WIP Swan Lake - Other 914,503

**Total 132210 · R&R Projects - WIP Swan Lake** 8,492,893

132220 · R&R Projects - WIP Tye Lake 909,933

132230 · R&R Projects - WIP STI-Transmsn 587,872

**Total 132200 · R&R Projects WIP Capital Improv** 9,990,697

**132900 · Accumulated Depreciation** (36,944,216)

**Total 130000 - Fixed Assets** 135,148,554

**Other Assets**

183000 · Deferred Assets

183001 · Long Term Receivable 242,499

183003 · 2009 Bond - Refunded Discount 143,192

183300 · Meterological Tower 4,688

Total 183000 · Deferred Assets 390,380

**TOTAL ASSETS** 165,958,516

**SOUTHEAST ALASKA POWER AGENCY**  
**Statement of Financial Position - Detail**  
**as of SEPTEMBER 30, 2016**

**LIABILITIES & EQUITY**

**Liabilities**

**Current Liabilities**

**Accounts Payable**

210100 · Accounts Payable General 1,421,525

**Total Accounts Payable** 1,421,525

**Other Current Liabilities**

210151 · Member Utility Rebate Payable 800,000

210152 · DNR Fund - CVEA KEA Portion 300,000

210300 · Reserve Interest Payable 273,545

210400 · Wages Payable 244,001

210500 · Payroll Liabilities

210521 · FICA Payable 3,979

210522 · SUI Tax Payable 827

210531 · IBEW H&W Payable 12,448

210540 · 457(b) Payable 1,070

210541 · IBEW Pension Payable 7,408

210550 · IBEW Dues Payable 949

Total 210500 · Payroll Liabilities 26,682

**Total Other Current Liabilities** 1,644,228

**Total Current Liabilities** 3,065,753

**Long Term Liabilities**

220100 · Series B Bonds 2009 7,160,000

220120 · 2009 Bond Issuance Discount (30,842)

220121 · PERS Unfunded Liability WRG 1,077,322

220130 · Series 2015 Bonds 10,295,000

220131 · 2015 Bond Issuance Premium 917,638

**Total Long Term Liabilities** 19,419,118

**Total Liabilities** 22,484,871

**Net Position**

310000 · Net Position

3100001 · Net Investment Capital Assets 114,061,234

3100002 · Restricted for Debt Service 1,590,694

3100003 · Restricted by External Agreement 948,891

3100004 · Unrestricted 26,083,925

Total 310000 · Net Position 142,684,744

Net Income 788,900

**Total Net Position** 143,473,645

**TOTAL LIABILITIES & NET POSITION** 165,958,516

**SOUTHEAST ALASKA POWER AGENCY**  
**Statement of Activities - Budget Comparison Detail**  
**SEPTEMBER 2016**

	SEP 2016	Budget	Jul'15-Sep'16	YTD Budget	Annual Budget
<b>Operating Income/Expense</b>					
<b>Operating Income</b>					
<b>410000 · Hydro Facility Revenues</b>					
410100 · Ketchikan Power Purchases	442,812	396,461	1,383,721	1,273,401	5,795,787
410200 · Petersburg Power Purchases	193,473	195,293	632,417	715,837	2,861,005
410300 · Wrangell Power Purchases	157,070	168,616	546,339	627,343	2,566,056
<b>Total 410000 · Hydro Facility Revenues</b>	<b>793,355</b>	<b>760,370</b>	<b>2,562,476</b>	<b>2,616,581</b>	<b>11,222,848</b>
<b>Total Operating Income</b>	<b>793,355</b>	<b>760,370</b>	<b>2,562,476</b>	<b>2,616,581</b>	<b>11,222,848</b>
<b>Operating Expense</b>					
<b>535000 · Hydro Ops-Suprvsn &amp; Engineering</b>					
535100 · Hyd/Ops Sup & Eng - Swan Lake	328	2,125	1,131	6,375	25,500
535150 · Hyd/Ops Sup & Eng - SWL SEAPA	110	1,610	2,464	4,230	5,220
535250 · Hyd/Ops Sup & Eng -TYL SEAPA	450	5,500	4,950	12,500	101,500
535400 · Hyd/Op Sup & Eng - Proj Drawing	-	500	5,413	1,500	66,750
<b>Total 535000 · Hydro Ops-Suprvsn &amp; Engineering</b>	<b>888</b>	<b>9,735</b>	<b>13,958</b>	<b>24,605</b>	<b>198,970</b>
<b>537000 · Hydraulic Expenses</b>					
537150 · Hydraulic Expense - SWL SEAPA	-	-	-	-	4,000
537250 · Hydraulic Expense - TYL SEAPA	-	-	-	-	4,000
<b>Total 537000 · Hydraulic Expenses</b>	<b>-</b>	<b>-</b>	<b>-</b>	<b>-</b>	<b>8,000</b>
<b>538000 · Electric Expenses</b>					
538100 · Electric Expense - Swan Lake	1,416	1,400	2,431	4,200	17,000
538150 · Electric Expense - SWL SEAPA	-	2,500	-	7,500	52,500
538200 · Electric Expense - Tye Lake	1,080	1,700	5,704	5,100	20,500
538250 · Electric Expense - TYL SEAPA	-	2,500	-	7,500	40,000
<b>Total 538000 · Electric Expenses</b>	<b>2,496</b>	<b>8,100</b>	<b>8,135</b>	<b>24,300</b>	<b>130,000</b>
<b>539000 · Misc Power Generation Expense</b>					
539100 · Misc Exp - Swan Lake	4,578	9,240	18,039	27,740	107,740
539150 · Misc Expense - SWL SEAPA	6,431	1,800	7,824	6,300	22,500
539151 · Misc Expense - SWL Communicatn	16,867	1,700	34,188	5,100	20,600
539200 · Misc Expense - Tye Lake	8,961	7,000	20,061	23,000	90,000
539250 · Misc Expense - TYL SEAPA	3,250	4,400	10,745	13,200	54,400
539251 · Misc Expense - TYL Communicatn	7,799	8,700	20,760	26,100	105,400
<b>Total 539000 · Misc Power Generation Expense</b>	<b>47,886</b>	<b>32,840</b>	<b>111,616</b>	<b>101,440</b>	<b>400,640</b>
<b>540000 · Rents</b>					
540300 · FERC Land Use Fee - Swan Lake	1,520	1,525	4,561	4,575	20,000
540400 · FERC Land Use Fee - Tye Lake	5,557	5,560	16,671	16,680	68,000
540500 · USDA Land Use Fee - USFS ROW	1,956	1,956	5,867	5,868	24,000
540600 · USDA Land Use Fee - STI	5,990	5,990	17,970	17,970	72,500
540700 · USDA Tye Passive Reflector	108	108	323	324	1,500
540710 · USDA Etolin Burnett Radio	45	46	136	138	600
<b>Total 540000 · Rents</b>	<b>15,176</b>	<b>15,185</b>	<b>45,528</b>	<b>45,555</b>	<b>186,600</b>
<b>541000 · Hydro Power Station Maintenance</b>					
541100 · Maintenance - Swan Lake	1,435	2,250	10,712	6,750	32,000
541150 · Maintenance - SWL SEAPA	-	2,290	775	6,870	27,500
541200 · Maintenance - Tye Lake	95	1,790	3,023	5,370	21,500
541250 · Maintenance - TYL SEAPA	1,365	2,290	1,365	6,870	27,500
<b>Total 541000 · Hydro Power Station Maintenance</b>	<b>2,895</b>	<b>8,620</b>	<b>15,875</b>	<b>25,860</b>	<b>108,500</b>
<b>543000 · Dams, Reservoirs &amp; Waterways</b>					
543100 · Dams Res & Waterwys - Swan Lake	-	300	-	900	4,000
543150 · Dams Res & Waterwys - SWL SEAPA	-	-	-	-	18,000
543200 · Dams Res & Waterwys - Tye Lake	-	-	-	-	6,500
543250 · Dams Res & Waterwys - TYL SEAPA	-	4,000	17,000	24,000	36,000
<b>Total 543000 · Dams, Reservoirs &amp; Waterways</b>	<b>-</b>	<b>4,300</b>	<b>17,000</b>	<b>24,900</b>	<b>64,500</b>

**SOUTHEAST ALASKA POWER AGENCY**  
**Statement of Activities - Budget Comparison Detail**  
**SEPTEMBER 2016**

	SEP 2016	Budget	Jul'15-Sep'16	YTD Budget	Annual Budget
<b>544000 · Maintenance of Electric Plant</b>					
544100 · Maint Electric Plant-Swan Lake	49,682	50,250	150,772	150,750	603,000
<b>5442900 · TYL Plant Wages &amp; Benefits</b>					
5442911 · TYL Plant Wages/PTO	32,825	30,000	94,192	95,000	384,000
5442912 · TYL Plant Wages OT	2,941	2,500	6,739	6,500	30,000
5442920 · TYL Plant Benefit - Taxes	2,665	2,800	7,808	8,400	34,000
5442930 · TYL Plant Benefits - Insurance	7,042	7,050	21,126	21,150	86,000
5442940 · TYL Plant Benefits - Retirement	4,098	4,000	12,122	12,000	49,000
5442992 · TYL Plant Grant-Capital Payroll	(1,143)		(3,858)		
<b>Total 5442900 · TYL Plant Wages &amp; Benefits</b>	<b>48,427</b>	<b>46,350</b>	<b>138,128</b>	<b>143,050</b>	<b>583,000</b>
<b>Total 544000 · Maintenance of Electric Plant</b>	<b>98,110</b>	<b>96,600</b>	<b>288,900</b>	<b>293,800</b>	<b>1,186,000</b>
<b>545000 · Plant Miscellaneous Maintenance</b>					
545100 · Plant Misc Maint - Swan Lake	-	2,500	4,131	8,750	31,500
545150 · Plant Misc Maint - SWL SEAPA	-	-	-	-	-
545200 · Plant Misc Maint - Tye Lake	969	2,000	7,394	6,000	20,500
<b>Total 545000 · Plant Miscellaneous Maintenance</b>	<b>969</b>	<b>4,500</b>	<b>11,525</b>	<b>14,750</b>	<b>52,000</b>
<b>561000 · Control System Maintenance</b>					
561150 · Control System Maint. - SWL	201	1,000	1,727	5,800	45,500
561250 · Control System Maint. - TYL	201	1,000	1,799	5,800	45,500
<b>Total 561000 · Control System Maintenance</b>	<b>401</b>	<b>2,000</b>	<b>3,526</b>	<b>11,600</b>	<b>91,000</b>
<b>562000 · Trans/Operations Station Exp</b>					
562100 · Trans/Ops Station - Swan Lake	-	1,250	-	3,750	15,000
562200 · Trans/Ops Station - Tye Lake	391	1,000	2,646	3,100	12,200
562250 · Trans/Ops Station-TYL SEAPA	1,042	25,850	7,708	53,550	135,200
<b>Total 562000 · Trans/Operations Station Exp</b>	<b>1,433</b>	<b>28,100</b>	<b>10,354</b>	<b>60,400</b>	<b>162,400</b>
<b>564000 · Trans/Submarine Cable Expense</b>					
564200 · Trans/Sub Cable Exp - Tye Lake	1,606	-	1,672	-	-
<b>Total 564000 · Trans/Submarine Cable Expense</b>	<b>1,606</b>	<b>-</b>	<b>1,672</b>	<b>-</b>	<b>-</b>
<b>571000 · Trans/Maint Overhead Lines(OHL)</b>					
571100 · Trans/Maint OHL - Swan Lake	-	2,000	-	6,000	24,000
571150 · Trans/Maint OHL - SWL SEAPA	-	-	22,144	23,000	128,000
571151 · Trans/Maint OHL - SWL ROW Clear	-	-	-	-	112,000
571200 · Trans/Maint OHL - Tye Lake	2,671	3,600	16,597	11,400	43,250
571250 · Trans/Maint OHL - TYL SEAPA	-	2,000	3,159	6,000	241,000
<b>5712900 · TYL Brushing Wages &amp; Benefits</b>					
5712911 · TYL Brushing Wages/PTO	14,501	12,500	49,694	37,500	151,000
5712912 · TYL Brushing Wages OT	4,643	1,500	15,047	5,000	13,000
5712920 · TYL Brushing Benefit - Taxes	1,666	1,100	4,999	3,300	13,200
5712930 · TYL Brushing Benefit- Insurance	5,282	3,400	15,845	10,200	41,100
5712940 · TYL Brushing Benefit- Retirement	3,311	1,050	9,815	3,250	12,700
5712992 · TYL Brush Grant-Capital Payroll	(13,763)		(44,796)		
<b>Total 5712900 · TYL Brushing Wages &amp; Benefits</b>	<b>15,640</b>	<b>19,550</b>	<b>50,603</b>	<b>59,250</b>	<b>231,000</b>
571300 · Trans/Maint OHL STI Maintenance	-	25,000	-	50,000	176,500
571500 · Trans/Maint OHL STI Therml Scan	-	-	-	-	-
571700 · Trans/Maint OH STI Clearing	-	-	7,754	10,000	150,000
571800 · Trans/Maint OHL System Events	-	5,000	-	10,000	50,000
<b>Total 571000 · Trans/Maint Overhead Lines(OHL)</b>	<b>18,311</b>	<b>57,150</b>	<b>100,257</b>	<b>175,650</b>	<b>1,155,750</b>

**SOUTHEAST ALASKA POWER AGENCY**  
**Statement of Activities - Budget Comparison Detail**  
**SEPTEMBER 2016**

	SEP 2016	Budget	Jul'15-Sep'16	YTD Budget	Annual Budget
<b>920000 · Admin Wages &amp; Benefits</b>					
9201911 · Admin Wages/PTO	80,485	74,000	234,381	224,000	886,000
9201912 · Admin Wages - Overtime	17	200	202	1,200	3,000
9201920 · Admin Benefit - Taxes	3,898	5,100	14,359	15,600	61,500
9201930 · Admin Benefit - H&W Insurance	18,149	18,150	54,448	54,450	226,000
9201940 · Admin Benefit - Retirement	26,602	26,750	80,783	80,250	321,000
9201992 · Admin Grant Payroll	(77)		(77)		
<b>Total 920000 · Admin Wages &amp; Benefits</b>	<b>129,074</b>	<b>124,200</b>	<b>384,094</b>	<b>375,500</b>	<b>1,497,500</b>
<b>921000 · Office Expenses</b>					
921100 · Office Supplies	612	1,250	5,192	3,750	15,000
921200 · Office Equipment	420	1,250	2,680	3,750	15,000
921300 · Phone, Courier, Internet	7,113	7,600	21,285	22,600	91,000
921400 · System Network / IT Support	3,068	4,400	9,578	13,200	53,000
921600 · Vehicle Expenses	281	400	2,388	1,000	4,000
<b>Total 921000 · Office Expenses</b>	<b>11,494</b>	<b>14,900</b>	<b>41,123</b>	<b>44,300</b>	<b>178,000</b>
<b>922000 · Legislative Affairs</b>	<b>4,000</b>	<b>4,000</b>	<b>12,000</b>	<b>12,000</b>	<b>60,000</b>
<b>923000 · Contract Services</b>					
923200 · Annual Financial Audit	-	-	-	-	35,000
923300 · Bank & Trustee Fees	258	250	886	800	11,600
923400 · Insurance Consultant	-	700	3,461	2,100	8,500
923500 · Investment Consultant	-	2,000	3,333	6,000	24,500
923600 · Legal Fees	10,589	15,000	26,743	45,000	180,000
923700 · Recruitment	-	1,800	1,274	5,400	22,000
923800 · Other Professional Services	-	7,500	6,875	22,500	90,000
<b>Total 923000 · Contract Services</b>	<b>10,847</b>	<b>27,250</b>	<b>42,572</b>	<b>81,800</b>	<b>371,600</b>
<b>924000 · Insurance</b>	<b>38,268</b>	<b>44,000</b>	<b>123,718</b>	<b>129,850</b>	<b>525,850</b>
<b>926000 · Retiree Benefits</b>					
926250 · Retiree Benefits TYL-PERS	-	-	-	-	40,000
<b>Total 926000 · Retiree Benefits</b>	<b>-</b>	<b>-</b>	<b>-</b>	<b>-</b>	<b>40,000</b>
<b>928000 · Regulatory Commission Expense</b>					
928001 · Other Regulatory Expense	-	350	-	1,050	4,650
928150 · FERC SWL Admin Fees	2,798	2,800	8,394	8,400	42,000
928151 · FERC SWL Other Expenses	440	8,500	440	25,500	102,000
928250 · FERC TYL Admin Fees	2,550	2,550	7,649	7,650	39,000
928251 · FERC TYL Other Expenses	-	150	-	450	2,300
<b>Total 928000 · Regulatory Commission Expense</b>	<b>5,788</b>	<b>14,350</b>	<b>16,483</b>	<b>43,050</b>	<b>189,950</b>
<b>930000 · General Expenses</b>					
930100 · Advertising Expense	121	300	188	900	4,000
930110 · Public Relations	1,619	3,500	5,104	10,500	42,500
930111 · PR - SEAPA History Project	4,980	1,250	4,233	3,750	15,000
930300 · Association Dues Expense	-	-	330	700	32,750
930310 · Professional Assn Dues	-	-	394	250	750
930400 · Board Meeting Expenses	7,819	2,000	8,157	7,000	35,000
930500 · Training Expense	6,016	2,000	7,203	5,000	25,500
930600 · Travel Expense	3,807	3,600	13,806	10,700	43,000
930700 · Non-Travel Incidental	(22,329)	300	(22,280)	1,000	4,000
<b>Total 930000 · General Expenses</b>	<b>2,034</b>	<b>12,950</b>	<b>17,135</b>	<b>39,800</b>	<b>202,500</b>
<b>931000 · Admin Rent</b>					
931010 · Office Rent	4,434	5,000	13,992	15,000	60,360
931100 · Apartment Rent - Ketchikan	1,770	1,875	5,299	5,625	22,500
<b>Total 931000 · Admin Rent</b>	<b>6,204</b>	<b>6,875</b>	<b>19,291</b>	<b>20,625</b>	<b>82,860</b>
<b>Total Operating Expense</b>	<b>397,877</b>	<b>515,655</b>	<b>1,284,761</b>	<b>1,549,785</b>	<b>6,892,620</b>
<b>Net Operating Income</b>	<b>395,478</b>	<b>244,715</b>	<b>1,277,715</b>	<b>1,066,796</b>	<b>4,330,228</b>

**SOUTHEAST ALASKA POWER AGENCY**  
**Statement of Activities - Budget Comparison Detail**  
**SEPTEMBER 2016**

	SEP 2016	Budget	Jul'15-Sep'16	YTD Budget	Annual Budget
<b>Nonoperating Income/Expense</b>					
<b>Nonoperating Income</b>					
<b>941000 · Grant Income</b>	177,730		799,122		
<b>942000 · Interest Income</b>					
942100 · Misc Interest Income	794		2,582		
942200 · Investment Interest Income	(9,207)		19,589		
<b>Total 942000 · Interest Income</b>	<u>(8,413)</u>		<u>22,171</u>		
<b>944000 · Realized Gain/Loss</b>					
944200 · Realized Gain/Loss on Invest	3,135		8,949		
<b>Total 944000 · Realized Gain/Loss</b>	<u>3,135</u>		<u>8,949</u>		
<b>945000 · Unrealized Gain/Loss</b>					
945200 · Unrealized Gain/Loss Investment	446		(33,267)		
<b>Total 945000 · Unrealized Gain/Loss</b>	<u>446</u>		<u>(33,267)</u>		
<b>Total Nonoperating Income</b>	172,898		796,975		
<b>Nonoperating Expense</b>					
<b>952000 · Bond Interest 2009 Series</b>	29,642		88,927		
<b>952001 · Bond Interest 2015 Series</b>	36,052		108,157		
<b>953000 · Depreciation Expense</b>	358,885		1,076,654		
<b>954000 · Grant Expenses</b>					
954001 · Grant Construction	-		173,486		
954002 · Grant Contractual	266		51,174		
954003 · Grant Equipment	-		582,192		
954004 · Grant Labor & Benefits	77		77		
954006 · Grant Materials & Supplies	-		-		
<b>Total 954000 · Grant Expenses</b>	<u>343</u>		<u>806,929</u>		
<b>954100 · Contributed Capital</b>	-		(794,877)		
<b>Total Nonoperating Expense</b>	424,922		1,285,789		
<b>Net Nonoperating Income</b>	<u>(252,024)</u>		<u>(488,815)</u>		
<b>Net Income</b>	143,454	244,715	788,900	1,066,796	4,330,228





## AUGUST 2016 FINANCIAL OVERVIEW

The following tables provide a snapshot of SEAPA's revenues and expenses for AUGUST, 2016.

AUGUST, 2016 revenues from kWh sales were under budget:

FIRM kWh SALES	AUGUST Actual	AUGUST Budget	Prior Year Actual
Ketchikan	\$474,440	\$427,709	\$414,020
Petersburg	\$230,478	\$274,303	\$284,602
Wrangell	\$187,545	\$226,909	\$219,137
<b>Total Revenue</b>	<b>\$892,463</b>	<b>\$928,921</b>	<b>\$917,759</b>

Year-to-date revenues (JUL - AUG) from kWh sales were under budget:

FIRM kWh SALES	YTD Actual	YTD Budget	Prior Yr Actual
Ketchikan	\$940,909	\$876,940	\$932,996
Petersburg	\$438,944	\$520,544	\$548,161
Wrangell	\$389,268	\$458,727	\$442,881
<b>Total Revenue</b>	<b>\$1,769,121</b>	<b>\$1,856,211</b>	<b>\$1,924,039</b>

kWh SALES (3 years)	FISCAL YEAR	AUGUST	YTD JUL-AUG
	2017	13,124,451	26,016,482
	2016	13,496,460	28,294,685
	2015	13,601,620	26,653,740

Administrative and operating expenses were under budget for AUGUST.

Administrative & Operating Expenses	AUGUST Actual	AUGUST Budget	Prior Yr Actual
	\$437,306	\$524,990	\$626,199
	YTD Actual	YTD Budget	Prior YTD Actual
	\$886,884	\$1,034,130	\$1,019,226

**AGENCY FUNDS**

Operations, Capital and Insurance Funds

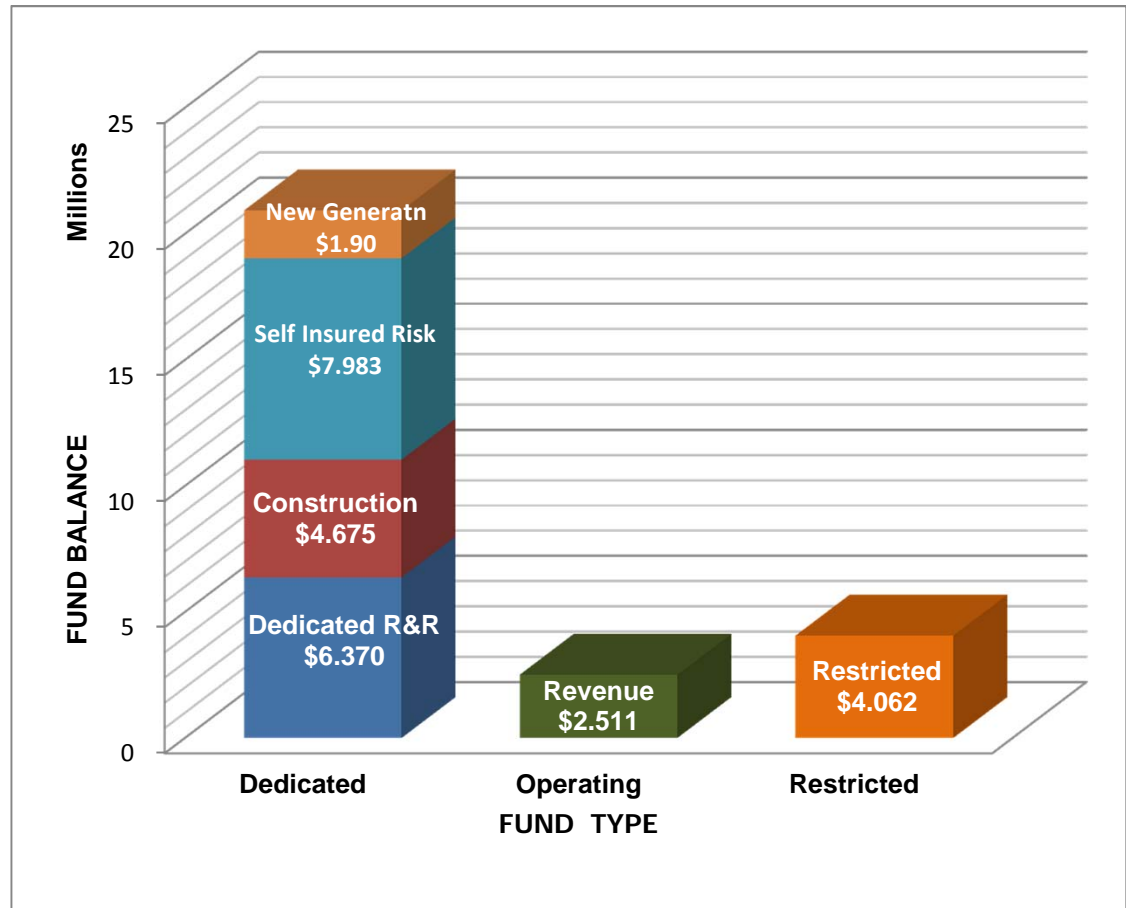
Revenue Fund FB	\$ 2,509,201
Required R&R Fund FB	1,000,154
Dedicated R&R Projects Fund FB	6,369,635
Construction Fund FB	4,674,911
Commercial FB	1,429
New Generation Fund	1,898,115
Self Insured Risk Fund FNBA	7,983,263
<b>Total Operations, Capital and Insurance Funds</b>	<b>24,436,707</b>

Trustee Funds

2009 Bond Interest	\$ 111,003
2009 Bond Principal	256,669
2009 Bond Reserve	1,410,239
2015 Bond Interest	121,923
2015 Bond Reserve	212,818
<b>Total Trustee Funds</b>	<b>2,112,652</b>

Other Restricted Funds

STI - USFS CD WF	\$ 21,623
DNR Reclamation Fund WF	927,269
<b>Total Other Restricted Funds</b>	<b>948,891</b>
<b>Total Agency Funds</b>	<b>\$ 27,498,250</b>



Dedicated Funds

- New Generation = Project feasibility funding (hydro, wind, geothermal)
- Self-Insured Risk = Coverage for uninsured transmission lines, submarine cables and insurance deductibles.
- Construction Fund = 2015 bond proceeds dedicated to Swan Lake Reservoir Expansion project.
- Dedicated R&R = Funds Replacement & Repair projects approved by the SEAPA Board in the budget.

Operating Funds

Revenue Fund & Commercial Checking: All SEAPA income is deposited to the Revenue Fund as required by Bond Indentures.

Restricted Funds (Legally or contractually restricted)

- Bonds = All Trustee Funds: Bond Interest, Principal, Reserve and Escrow accounts
- R&R = \$1,000,000 minimum balance required by bond indenture
- DNR = Alaska DNR Reclamation Agreement
- USFS = USFS Land Remediation Certificate of Deposit

**SOUTHEAST ALASKA POWER AGENCY**  
**Statement of Financial Position - Summary Prior Year Comparison**  
**as of AUGUST 31, 2016**

ASSETS	Aug 31, 2016	Aug 31, 2015
<b>Current Assets</b>		
<b>Agency Funds</b>		
111000 · Ops/Capital/Insurance Funds	24,436,707	28,162,905
112000 · Trustee Funds	2,112,652	2,137,452
113000 · Other Restricted Funds	948,891	873,886
<b>Total Agency Funds</b>	27,498,250	31,174,242
<b>Accounts Receivable</b>		
110000 · Accounts Receivable	1,240,206	1,532,770
110010 · Unbilled Displaced Sales	326,905	235,420
110100 · Grants Receivable	605,753	54,036
<b>Total Accounts Receivable</b>	2,172,864	1,822,226
<b>Other Current Assets</b>		
120200 · Other Receivables	4,606	4,606
120300 · Accrued Interest Receivable	32,865	(6,080)
120500 · Prepaid Fees	625,977	571,200
120700 · Inventory Assets	944,809	952,952
<b>Total Other Current Assets</b>	1,608,257	1,522,677
<b>Total Current Assets</b>	31,279,371	34,519,146
<b>Fixed Assets</b>		
130100 · Capital Assets	162,102,073	156,307,967
132200 · R&R Projects WIP Capital Improv	8,915,036	4,880,266
132900 · Accumulated Depreciation	(36,585,332)	(32,427,735)
<b>Total Fixed Assets</b>	134,431,778	128,760,499
<b>Other Assets</b>		
183000 · Deferred Assets	391,858	482,502
<b>Total Other Assets</b>	391,858	482,502
<b>TOTAL ASSETS</b>	<b>166,145,620</b>	<b>163,804,394</b>
<b>LIABILITIES &amp; EQUITY</b>		
<b>Liabilities</b>		
<b>Current Liabilities</b>		
Accounts Payable		
210100 · Accounts Payable General	1,776,750	1,205,585
Total Accounts Payable	1,776,750	1,205,585
Other Current Liabilities		
210151 · Member Utility Rebate Payable	800,000	1,500,000
210152 · DNR Fund - CVEA KEA Portion	300,000	262,500
210300 · Reserve Interest Payable	205,154	222,965
210400 · Wages Payable	240,643	160,613
210500 · Payroll Liabilities	26,899	9,347
Total Other Current Liabilities	1,572,695	2,155,426
<b>Total Current Liabilities</b>	3,349,445	3,361,011
<b>Long Term Liabilities</b>		
220100 · Series B Bonds 2009	7,160,000	7,905,000
220120 · 2009 Bond Issuance Discount	(31,178)	(35,536)
220121 · PERS Unfunded Liability WRG	1,077,322	488,768
220130 · Series 2015 Bonds	10,295,000	10,295,000
220131 · 2015 Bond Issuance Premium	922,226	981,873
<b>Total Long Term Liabilities</b>	19,423,371	19,635,105
<b>Total Liabilities</b>	22,772,816	22,996,116
<b>Net Position</b>		
<b>310000 · Net Position</b>	142,684,744	140,879,386
<b>Net Income</b>	645,446	(113,356)
<b>Total Net Position</b>	143,330,190	140,766,031
<b>TOTAL LIABILITIES &amp; NET POSITION</b>	<b>166,103,007</b>	<b>163,762,147</b>

**SOUTHEAST ALASKA POWER AGENCY**  
**Statement of Activities - Summary Prior Year Comparison**  
**AUGUST 2016**

	Aug 2016	Aug 2015
<b>Operating Income/Expense</b>		
<b>Operating Income</b>		
410000 · Hydro Facility Revenues	892,463	917,759
<b>Total Operating Income</b>	892,463	917,759
<b>Gross Profit</b>	892,463	917,759
<b>Operating Expense</b>		
535000 · Hydro Ops-Suprvsn & Engineering	10,533	164
538000 · Electric Expenses	3,016	6,985
539000 · Misc Power Generation Expense	29,307	38,916
540000 · Rents	15,176	10,802
541000 · Hydro Power Station Maintenance	5,283	3,095
543000 · Dams, Reservoirs & Waterways	-	3,385
544000 · Maintenance of Electric Plant	99,091	98,540
545000 · Plant Miscellaneous Maintenance	5,693	3,644
561000 · Control System Maintenance	1,599	9,764
562000 · Trans/Operations Station Exp	4,768	1,327
571000 · Trans/Maint Overhead Lines(OHL)	38,431	228,817
920000 · Admin Wages & Benefits	124,116	117,148
921000 · Office Expenses	13,916	13,928
922000 · Legislative Affairs	4,000	4,370
923000 · Contract Services	18,231	26,306
924000 · Insurance	44,213	39,572
928000 · Regulatory Commission Expense	5,348	5,860
930000 · General Expenses	7,746	7,551
931000 · Admin Rent	6,840	6,024
<b>Total Operating Expense</b>	437,306	626,199
<b>Net Operating Income</b>	455,157	291,561
<b>Non-Operating Income/Expense</b>		
<b>Non-Operating Income</b>		
941000 · Grant Income	605,753	13,449
942000 · Interest Income	2,631	8,405
944000 · Realized Gain/Loss	-	(18,977)
945000 · Unrealized Gain/Loss	(17,954)	(49,496)
946000 · Misc Nonoperating Income	-	0
<b>Total Non-Operating Income</b>	590,431	(46,617)
<b>Non-Operating Expense</b>		
952000 · Bond Interest 2009 Series	29,642	30,512
952001 · Bond Interest 2015 Series	36,052	41,697
953000 · Depreciation Expense	358,885	338,540
954000 · Grant Expenses	223,943	119,694
954100 · Contributed Capital	(216,136)	(72,463)
<b>Total Non-Operating Expense</b>	432,386	457,980
<b>Net Non-Operating Income</b>	158,045	(504,597)
<b>Net Change in Financial Position</b>	<b>613,202</b>	<b>(213,036)</b>

**SOUTHEAST ALASKA POWER AGENCY**  
**Statement of Financial Position - Detail**  
**as of AUGUST 31, 2016**

**ASSETS**

**Current Assets**

**Agency Funds**

111000 · Ops/Capital/Insurance Funds	
111100 · Revenue Fund FB	2,509,201
111200 · Required R&R Fund FB	1,000,154
111210 · Dedicated R&R Projects Fund FB	6,369,635
111211 · Construction Fund FB	4,674,911
111300 · Commercial FB	1,429
111401 · New Generation Fund	1,898,115
111500 · Self Insured Risk Fund FNBA	7,983,263
<b>Total 111000 · Ops/Capital/Insurance Funds</b>	<b>24,436,707</b>
112000 · Trustee Funds	
112100 · WF Trust 2009 Bond Interest	111,003
112200 · WF Trust 2009 Bond Principal	256,669
112300 · WF Trust 2009 Bond Reserve	1,410,239
112501 · WF Trust 2015 Bond Interest	121,923
112503 · WF Trust 2015 Bond Reserve	212,818
<b>Total 112000 · Trustee Funds</b>	<b>2,112,652</b>
113000 · Other Restricted Funds	
113100 · STI - USFS CD WF	21,623
113500 · DNR Reclamation Fund WF	927,269
<b>Total 113000 · Other Restricted Funds</b>	<b>948,891</b>
<b>Total Agency Funds</b>	<b>27,498,250</b>

**Accounts Receivable**

110000 · Accounts Receivable	1,240,206
110010 · Unbilled Displaced Sales	326,905
110100 · Grants Receivable	605,753
<b>Total Accounts Receivable</b>	<b>2,172,864</b>

**Other Current Assets**

<b>120200 · Other Receivables</b>	4,606
<b>120300 · Accrued Interest Receivable</b>	32,865
<b>120500 · Prepaid Fees</b>	
120510 · Prepaid FERC Fees	12,425
120520 · Prepaid Insurance	483,618
120530 · Prepaid Operating Expense	1,526
120540 · Prepaid USDA FS Land Use Fees	32,395
120550 · Prepaid Admin Benefits	96,013
<b>Total 120500 · Prepaid Fees</b>	<b>625,977</b>
<b>120700 · Inventory Assets</b>	
120702 · Inventory - Marker Balls	54,404
1328101 · Inventory-SWL Winding Replacmnt	890,405
<b>Total 120700 · Inventory Assets</b>	<b>944,809</b>
<b>Total 120000 - Other Current Assets</b>	<b>1,608,257</b>
<b>Total Current Assets</b>	<b>31,279,371</b>

**SOUTHEAST ALASKA POWER AGENCY**  
**Statement of Financial Position - Detail**  
**as of AUGUST 31, 2016**

<b>Fixed Assets</b>	
<b>130100 · Capital Assets</b>	
130110 · Swan Lake	17,697,748
130120 · Tyee Lake	29,329,001
130130 · SEAPA Office	800,871
132100 · Swan Tyee Intertie in Operation	114,274,453
<b>Total 130100 · Capital Assets</b>	<u>162,102,073</u>
<b>132200 · R&amp;R Projects WIP Capital Improv</b>	
<b>132210 · R&amp;R Projects - WIP Swan Lake</b>	
1322100 · R&R WIP SWL- Reservoir Increase	
1322101 · WIP SWL Agency Permits/Environm	960,702
1322102 · WIP SWL Construction	2,785,856
1322103 · WIP SWL Equipment	955,761
1322104 · WIP SWL Engineering/Design	1,517,425
1322105 · WIP SWL Legal	68,312
1322106 · WIP SWL Project Mgmt/Professnal	298,785
Total 1322100 · R&R WIP SWL- Reservoir Increase	<u>6,586,840</u>
132210 · R&R Projects - WIP Swan Lake - Other	911,989
<b>Total 132210 · R&amp;R Projects - WIP Swan Lake</b>	<u>7,498,828</u>
132220 · R&R Projects - WIP Tyee Lake	829,462
132230 · R&R Projects - WIP STI-Transmsn	586,747
<b>Total 132200 · R&amp;R Projects WIP Capital Improv</b>	<u>8,915,036</u>
<b>132900 · Accumulated Depreciation</b>	<u>(36,585,332)</u>
<b>Total 130000 - Fixed Assets</b>	<u>134,431,778</u>
<b>Other Assets</b>	
183000 · Deferred Assets	
183001 · Long Term Receivable	242,499
183003 · 2009 Bond - Refunded Discount	144,749
183300 · Meterological Tower	4,610
Total 183000 · Deferred Assets	<u>391,858</u>
<b>TOTAL ASSETS</b>	<u><u>166,103,007</u></u>

**SOUTHEAST ALASKA POWER AGENCY**  
**Statement of Financial Position - Detail**  
as of **AUGUST 31, 2016**

**LIABILITIES & EQUITY**

**Liabilities**

**Current Liabilities**

**Accounts Payable**

210100 · Accounts Payable General 1,776,750

**Total Accounts Payable** 1,776,750

**Other Current Liabilities**

210151 · Member Utility Rebate Payable 800,000

210152 · DNR Fund - CVEA KEA Portion 300,000

210300 · Reserve Interest Payable 205,154

210400 · Wages Payable 240,643

210500 · Payroll Liabilities

210521 · FICA Payable 4,307

210522 · SUI Tax Payable 664

210531 · IBEW H&W Payable 12,448

210540 · 457(b) Payable 1,068

210541 · IBEW Pension Payable 7,510

210550 · IBEW Dues Payable 902

Total 210500 · Payroll Liabilities 26,899

**Total Other Current Liabilities** 1,572,695

**Total Current Liabilities** 3,349,445

**Long Term Liabilities**

220100 · Series B Bonds 2009 7,160,000

220120 · 2009 Bond Issuance Discount (31,178)

220121 · PERS Unfunded Liability WRG 1,077,322

220130 · Series 2015 Bonds 10,295,000

220131 · 2015 Bond Issuance Premium 922,226

**Total Long Term Liabilities** 19,423,371

**Total Liabilities** 22,772,816

**Net Position**

310000 · Net Position

3100001 · Net Investment Capital Assets 114,061,234

3100002 · Restricted for Debt Service 1,590,694

3100003 · Restricted by External Agreement 948,891

3100004 · Unrestricted 26,083,925

Total 310000 · Net Position 142,684,744

Net Income 645,446

**Total Net Position** 143,330,190

**TOTAL LIABILITIES & NET POSITION** 166,103,007

**SOUTHEAST ALASKA POWER AGENCY**  
**Statement of Activities - Budget Comparison Detail**  
**AUGUST 2016**

	AUG 2016	Budget	Jul'15-Aug'16	YTD Budget	Annual Budget
<b>Operating Income/Expense</b>					
<b>Operating Income</b>					
<b>410000 · Hydro Facility Revenues</b>					
410100 · Ketchikan Power Purchases	474,440	427,709	940,909	876,940	5,795,787
410200 · Petersburg Power Purchases	230,478	274,303	438,944	520,544	2,861,005
410300 · Wrangell Power Purchases	187,545	226,909	389,268	458,727	2,566,056
<b>Total 410000 · Hydro Facility Revenues</b>	<b>892,463</b>	<b>928,921</b>	<b>1,769,121</b>	<b>1,856,211</b>	<b>11,222,848</b>
<b>Total Operating Income</b>	<b>892,463</b>	<b>928,921</b>	<b>1,769,121</b>	<b>1,856,211</b>	<b>11,222,848</b>
<b>Operating Expense</b>					
<b>535000 · Hydro Ops-Suprvsn &amp; Engineering</b>					
535100 · Hyd/Ops Sup & Eng - Swan Lake	331	2,125	803	4,250	25,500
535150 · Hyd/Ops Sup & Eng - SWL SEAPA	290	110	2,354	2,620	5,220
535250 · Hyd/Ops Sup & Eng -TYL SEAPA	4,500	5,000	4,500	7,000	101,500
535400 · Hyd/Op Sup & Eng - Proj Drawing	5,413	500	5,413	1,000	66,750
<b>Total 535000 · Hydro Ops-Suprvsn &amp; Engineering</b>	<b>10,533</b>	<b>7,735</b>	<b>13,070</b>	<b>14,870</b>	<b>198,970</b>
<b>537000 · Hydraulic Expenses</b>					
537150 · Hydraulic Expense - SWL SEAPA	-	-	-	-	4,000
537250 · Hydraulic Expense - TYL SEAPA	-	-	-	-	4,000
<b>Total 537000 · Hydraulic Expenses</b>	<b>-</b>	<b>-</b>	<b>-</b>	<b>-</b>	<b>8,000</b>
<b>538000 · Electric Expenses</b>					
538100 · Electric Expense - Swan Lake	160	1,400	1,016	2,800	17,000
538150 · Electric Expense - SWL SEAPA	-	2,500	-	5,000	52,500
538200 · Electric Expense - Tyee Lake	2,856	1,700	4,624	3,400	20,500
538250 · Electric Expense - TYL SEAPA	-	2,500	-	5,000	40,000
<b>Total 538000 · Electric Expenses</b>	<b>3,016</b>	<b>8,100</b>	<b>5,640</b>	<b>16,200</b>	<b>130,000</b>
<b>539000 · Misc Power Generation Expense</b>					
539100 · Misc Exp - Swan Lake	3,958	9,250	13,461	18,500	107,740
539150 · Misc Expense - SWL SEAPA	610	1,300	1,393	4,500	22,500
539151 · Misc Expense - SWL Communicatn	9,738	1,700	17,321	3,400	20,600
539200 · Misc Expense - Tyee Lake	3,324	7,000	11,099	16,000	90,000
539250 · Misc Expense - TYL SEAPA	5,652	4,400	7,495	8,800	54,400
539251 · Misc Expense - TYL Communicatn	6,025	8,700	12,961	17,400	105,400
<b>Total 539000 · Misc Power Generation Expense</b>	<b>29,307</b>	<b>32,350</b>	<b>63,730</b>	<b>68,600</b>	<b>400,640</b>
<b>540000 · Rents</b>					
540300 · FERC Land Use Fee - Swan Lake	1,520	1,525	3,041	3,050	20,000
540400 · FERC Land Use Fee - Tyee Lake	5,557	5,560	11,114	11,120	68,000
540500 · USDA Land Use Fee - USFS ROW	1,956	1,956	3,911	3,912	24,000
540600 · USDA Land Use Fee - STI	5,990	5,990	11,980	11,980	72,500
540700 · USDA Tyee Passive Reflector	108	108	215	216	1,500
540710 · USDA EtoLin Burnett Radio	45	46	91	92	600
<b>Total 540000 · Rents</b>	<b>15,176</b>	<b>15,185</b>	<b>30,352</b>	<b>30,370</b>	<b>186,600</b>
<b>541000 · Hydro Power Station Maintenance</b>					
541100 · Maintenance - Swan Lake	5,249	2,250	9,277	4,500	32,000
541150 · Maintenance - SWL SEAPA	-	2,290	775	4,580	27,500
541200 · Maintenance - Tyee Lake	34	1,790	2,928	3,580	21,500
541250 · Maintenance - TYL SEAPA	-	2,290	-	4,580	27,500
<b>Total 541000 · Hydro Power Station Maintenance</b>	<b>5,283</b>	<b>8,620</b>	<b>12,980</b>	<b>17,240</b>	<b>108,500</b>
<b>543000 · Dams, Reservoirs &amp; Waterways</b>					
543100 · Dams Res & Waterwys - Swan Lake	-	300	-	600	4,000
543150 · Dams Res & Waterwys - SWL SEAPA	-	-	-	-	18,000
543200 · Dams Res & Waterwys - Tyee Lake	-	-	-	-	6,500
543250 · Dams Res & Waterwys - TYL SEAPA	-	4,000	17,000	20,000	36,000
<b>Total 543000 · Dams, Reservoirs &amp; Waterways</b>	<b>-</b>	<b>4,300</b>	<b>17,000</b>	<b>20,600</b>	<b>64,500</b>



**SOUTHEAST ALASKA POWER AGENCY**  
**Statement of Activities - Budget Comparison Detail**  
**AUGUST 2016**

	<b>AUG 2016</b>	<b>Budget</b>	<b>Jul'15-Aug'16</b>	<b>YTD Budget</b>	<b>Annual Budget</b>
<b>544000 · Maintenance of Electric Plant</b>					
544100 · Maint Electric Plant-Swan Lake	52,103	50,250	101,089	100,500	603,000
<b>5442900 · TYL Plant Wages &amp; Benefits</b>					
5442911 · TYL Plant Wages/PTO	31,459	32,000	61,367	65,000	384,000
5442912 · TYL Plant Wages OT	2,470	2,500	3,798	4,000	30,000
5442920 · TYL Plant Benefit - Taxes	2,604	2,800	5,143	5,600	34,000
5442930 · TYL Plant Benefits - Insurance	7,042	7,050	14,084	14,100	86,000
5442940 · TYL Plant Benefits - Retirement	4,026	4,000	8,025	8,000	49,000
5442992 · TYL Plant Grant-Capital Payroll	(612)		(2,716)		
<b>Total 5442900 · TYL Plant Wages &amp; Benefits</b>	<b>46,989</b>	<b>48,350</b>	<b>89,701</b>	<b>96,700</b>	<b>583,000</b>
<b>Total 544000 · Maintenance of Electric Plant</b>	<b>99,091</b>	<b>98,600</b>	<b>190,790</b>	<b>197,200</b>	<b>1,186,000</b>
<b>545000 · Plant Miscellaneous Maintenance</b>					
545100 · Plant Misc Maint - Swan Lake	-	3,000	4,131	6,250	31,500
545200 · Plant Misc Maint - Tye Lake	5,693	2,000	6,425	4,000	20,500
<b>Total 545000 · Plant Miscellaneous Maintenance</b>	<b>5,693</b>	<b>5,000</b>	<b>10,556</b>	<b>10,250</b>	<b>52,000</b>
<b>561000 · Control System Maintenance</b>					
561150 · Control System Maint. - SWL	763	1,000	1,526	4,800	45,500
561250 · Control System Maint. - TYL	836	1,000	1,599	4,800	45,500
<b>Total 561000 · Control System Maintenance</b>	<b>1,599</b>	<b>2,000</b>	<b>3,125</b>	<b>9,600</b>	<b>91,000</b>
<b>562000 · Trans/Operations Station Exp</b>					
562100 · Trans/Ops Station - Swan Lake	-	1,250	-	2,500	15,000
562200 · Trans/Ops Station - Tye Lake	2,255	1,000	2,255	2,100	12,200
562250 · Trans/Ops Station-TYL SEAPA	2,512	20,850	6,666	27,700	135,200
<b>Total 562000 · Trans/Operations Station Exp</b>	<b>4,768</b>	<b>23,100</b>	<b>8,922</b>	<b>32,300</b>	<b>162,400</b>
<b>564000 · Trans/Submarine Cable Expense</b>					
564200 · Trans/Sub Cable Exp - Tye Lake	-	-	66	-	-
<b>Total 564000 · Trans/Submarine Cable Expense</b>	<b>-</b>	<b>-</b>	<b>66</b>	<b>-</b>	<b>-</b>
<b>571000 · Trans/Maint Overhead Lines(OHL)</b>					
571100 · Trans/Maint OHL - Swan Lake	-	2,000	-	4,000	24,000
571150 · Trans/Maint OHL - SWL SEAPA	-	-	22,144	23,000	128,000
571151 · Trans/Maint OHL - SWL ROW Clear	-	-	-	-	112,000
571200 · Trans/Maint OHL - Tye Lake	10,144	4,000	13,925	7,800	43,250
571250 · Trans/Maint OHL - TYL SEAPA	-	2,000	3,159	4,000	241,000
<b>5712900 · TYL Brushing Wages &amp; Benefits</b>					
5712911 · TYL Brushing Wages/PTO	18,734	12,500	35,193	25,000	151,000
5712912 · TYL Brushing Wages OT	5,352	2,500	10,404	3,500	13,000
5712920 · TYL Brushing Benefit - Taxes	1,774	1,100	3,333	2,200	13,200
5712930 · TYL Brushing Benefit- Insurance	7,042	3,400	10,563	6,800	41,100
5712940 · TYL Brushing Benefit- Retirement	3,484	1,100	6,504	2,200	12,700
5712992 · TYL Brush Grant-Capital Payroll	(15,297)		(31,033)		
<b>Total 5712900 · TYL Brushing Wages &amp; Benefits</b>	<b>21,088</b>	<b>20,600</b>	<b>34,964</b>	<b>39,700</b>	<b>231,000</b>
571300 · Trans/Maint OHL STI Maintenance	-	25,000	-	25,000	176,500
571500 · Trans/Maint OHL STI Therml Scan	-	-	-	-	-
571700 · Trans/Maint OH STI Clearing	7,198	10,000	7,754	10,000	150,000
571800 · Trans/Maint OHL System Events	-	5,000	-	5,000	50,000
<b>Total 571000 · Trans/Maint Overhead Lines(OHL)</b>	<b>38,431</b>	<b>68,600</b>	<b>81,946</b>	<b>118,500</b>	<b>1,155,750</b>

**SOUTHEAST ALASKA POWER AGENCY**  
**Statement of Activities - Budget Comparison Detail**  
**AUGUST 2016**

	<b>AUG 2016</b>	<b>Budget</b>	<b>Jul'15-Aug'16</b>	<b>YTD Budget</b>	<b>Annual Budget</b>
<b>920000 · Admin Wages &amp; Benefits</b>					
9201911 · Admin Wages/PTO	74,545	75,000	153,896	150,000	886,000
9201912 · Admin Wages - Overtime	87	500	185	1,000	3,000
9201920 · Admin Benefit - Taxes	4,743	5,200	10,461	10,500	61,500
9201930 · Admin Benefit - H&W Insurance	18,149	18,150	36,298	36,300	226,000
9201940 · Admin Benefit - Retirement	26,593	26,750	54,180	53,500	321,000
<b>Total 920000 · Admin Wages &amp; Benefits</b>	<b>124,116</b>	<b>125,600</b>	<b>255,020</b>	<b>251,300</b>	<b>1,497,500</b>
<b>921000 · Office Expenses</b>					
921100 · Office Supplies	2,062	1,000	4,580	2,500	15,000
921200 · Office Equipment	238	1,250	2,260	2,500	15,000
921300 · Phone, Courier, Internet	7,086	7,500	14,172	15,000	91,000
921400 · System Network / IT Support	3,212	4,400	6,510	8,800	53,000
921600 · Vehicle Expenses	1,318	300	2,107	600	4,000
<b>Total 921000 · Office Expenses</b>	<b>13,916</b>	<b>14,450</b>	<b>29,628</b>	<b>29,400</b>	<b>178,000</b>
<b>922000 · Legislative Affairs</b>	<b>4,000</b>	<b>4,000</b>	<b>8,000</b>	<b>8,000</b>	<b>60,000</b>
<b>923000 · Contract Services</b>					
923200 · Annual Financial Audit	-	-	-	-	35,000
923300 · Bank & Trustee Fees	249	275	628	550	11,600
923400 · Insurance Consultant	3,461	700	3,461	1,400	8,500
923500 · Investment Consultant	1,665	2,000	3,333	4,000	24,500
923600 · Legal Fees	7,700	15,000	16,154	30,000	180,000
923700 · Recruitment	-	1,800	1,274	3,600	22,000
923800 · Other Professional Services	5,155	7,500	6,875	15,000	90,000
<b>Total 923000 · Contract Services</b>	<b>18,231</b>	<b>27,275</b>	<b>31,726</b>	<b>54,550</b>	<b>371,600</b>
<b>924000 · Insurance</b>	<b>44,213</b>	<b>44,000</b>	<b>85,451</b>	<b>85,850</b>	<b>525,850</b>
<b>926000 · Retiree Benefits</b>					
926250 · Retiree Benefits TYL-PERS	-	-	-	-	40,000
<b>Total 926000 · Retiree Benefits</b>	<b>-</b>	<b>-</b>	<b>-</b>	<b>-</b>	<b>40,000</b>
<b>928000 · Regulatory Commission Expense</b>					
928001 · Other Regulatory Expense	-	350	-	700	4,650
928150 · FERC SWL Admin Fees	2,798	2,800	5,596	5,600	42,000
928151 · FERC SWL Other Expenses	-	8,500	-	17,000	102,000
928250 · FERC TYL Admin Fees	2,550	2,550	5,099	5,100	39,000
928251 · FERC TYL Other Expenses	-	150	-	300	2,300
<b>Total 928000 · Regulatory Commission Expense</b>	<b>5,348</b>	<b>14,350</b>	<b>10,695</b>	<b>28,700</b>	<b>189,950</b>
<b>930000 · General Expenses</b>					
930100 · Advertising Expense	67	300	67	600	4,000
930110 · Public Relations	2,024	3,500	3,484	7,000	42,500
930111 · PR - SEAPA History Project	-	1,250	(748)	2,500	15,000
930300 · Association Dues Expense	-	-	330	700	32,750
930310 · Professional Assn Dues	-	-	394	250	750
930400 · Board Meeting Expenses	-	4,000	338	5,000	35,000
930500 · Training Expense	294	2,000	1,187	3,000	25,500
930600 · Travel Expense	5,322	3,500	9,999	7,100	43,000
930700 · Non-Travel Incidental	38	300	49	700	4,000
<b>Total 930000 · General Expenses</b>	<b>7,746</b>	<b>14,850</b>	<b>15,101</b>	<b>26,850</b>	<b>202,500</b>
<b>931000 · Admin Rent</b>					
931010 · Office Rent	5,076	5,000	9,558	10,000	60,360
931100 · Apartment Rent - Ketchikan	1,764	1,875	3,529	3,750	22,500
<b>Total 931000 · Admin Rent</b>	<b>6,840</b>	<b>6,875</b>	<b>13,087</b>	<b>13,750</b>	<b>82,860</b>
<b>Total Operating Expense</b>	<b>437,306</b>	<b>524,990</b>	<b>886,884</b>	<b>1,034,130</b>	<b>6,892,620</b>
<b>Net Operating Income</b>	<b>455,157</b>	<b>403,931</b>	<b>882,237</b>	<b>822,081</b>	<b>4,330,228</b>

**SOUTHEAST ALASKA POWER AGENCY**  
**Statement of Activities - Budget Comparison Detail**  
**AUGUST 2016**

	<b>AUG 2016</b>	<b>Budget</b>	<b>Jul'15-Aug'16</b>	<b>YTD Budget</b>	<b>Annual Budget</b>
<b>Nonoperating Income/Expense</b>					
<b>Nonoperating Income</b>					
<b>941000 · Grant Income</b>	605,753		621,392		
<b>942000 · Interest Income</b>					
942100 · Misc Interest Income	864		1,787		
942200 · Investment Interest Income	1,767		28,796		
<b>Total 942000 · Interest Income</b>	2,631		30,583		
<b>944000 · Realized Gain/Loss</b>					
944200 · Realized Gain/Loss on Invest	-		5,814		
<b>Total 944000 · Realized Gain/Loss</b>	-		5,814		
<b>945000 · Unrealized Gain/Loss</b>					
945200 · Unrealized Gain/Loss Investment	(17,954)		(33,713)		
<b>Total 945000 · Unrealized Gain/Loss</b>	(17,954)		(33,713)		
<b>Total Nonoperating Income</b>	590,431		624,076		
<b>Nonoperating Expense</b>					
<b>952000 · Bond Interest 2009 Series</b>	29,642		59,284		
<b>952001 · Bond Interest 2015 Series</b>	36,052		72,105		
<b>953000 · Depreciation Expense</b>	358,885		717,769		
<b>954000 · Grant Expenses</b>					
954001 · Grant Construction	173,486		173,486		
954002 · Grant Contractual	7,807		50,909		
954003 · Grant Equipment	42,650		582,192		
954006 · Grant Materials & Supplies	-		-		
<b>Total 954000 · Grant Expenses</b>	223,943		806,586		
<b>954100 · Contributed Capital</b>	(216,136)		(794,877)		
<b>Total Nonoperating Expense</b>	432,386		860,867		
<b>Net Nonoperating Income</b>	158,045		(236,791)		
<b>Net Income</b>	613,202	403,931	645,446	822,081	4,330,228

Southeast Alaska Power Agency R&R CAPITAL PROJECTS	FY2017		WIP CAPITAL PROJECTS September 30, 2016	FY13	FY14	FY15	FY16	FY17	TOTAL	Overall BUDGET
	Budget	Expenditures								
242-13 Reservoir Expansion SWL	\$ 6,820,253	3,087,565		421,782	394,811	525,020	2,984,027	3,087,565	7,413,205	11,115,568
Grant Funding	\$ (2,991,308)	(851,519)		(6,392)	(245,260)	(513,931)	(2,280,897)	(851,519)	(3,898,000)	(3,898,000)
Construction Fund	\$ (6,000,000)	(2,236,046)					(112,342)	(2,236,046)	(2,348,388)	(6,004,500)
231-13 Helicopter Pads	\$ 500,000	526,822	Installation complete Jul 2016.	57,731	98,391	533,783	2,181,644	526,822	3,398,371	3,403,165
232-13 Communications Upgrade	\$ 83,000	3,159	Tyee satellite installation	12,160	186,520	15,995	165,667	3,159	383,501	520,100
240-13 Cooling Water TYL	\$ 37,260	612	Controls being integrated.	26,600	67,566	1,250	62,024	612	158,051	199,700
241-13 Stream Gauge TYL	\$ 200,000	42,764	Phase 2 abutment sealing done	37,845	562,635	22,753	106,528	42,764	772,525	1,467,758
248-14 Lathe TYL	\$ -	576	IN-SERVICE OCT 2016	230	16,593	(16,823)	41,441	576	42,016	42,000
249-14 Marine Term Gage/CommTYL	\$ -	43,104	Radio programming ongoing		-	126,111	161,353	43,104	330,568	245,000
252-14 Submarine SpliceSpareTYL	\$ 213,000	-	Existing kits evaluated.		-	-	-	-	-	213,000
256-15 Alarm Trip Protectn SWL-TYL	\$ 53,011	37,403	Underway; completion FY17.			611	157,765	37,403	195,779	222,000
258-15 System Control Improve SWL-TY	\$ 38,843	2,973	Project underway.			28,766	44,194	2,973	75,932	116,800
259-15 Turbine Shutoff Valves TYL	\$ 35,000	-	Partially installed.			84,857	170,774	-	255,631	290,630
260-15 Exciters SWL	\$ 415,751	3,081	Exciters on site.			10,104	374,052	3,081	387,237	799,000
261-15 Generator Switch Gear SWL	\$ 484,743	3,081	Equipment delivered.			9,773	388,390	3,081	401,244	882,000
263-16 CTs-Relay CircSwitcwr WRG	\$ 165,000	1,439	Electrical design underway.				20,963	1,439	22,402	201,000
265-16 Marker Balls OHL TYL	\$ 600,596	164	Contract awarded.				-	164	164	600,596
267-16 Roof-Siding Housing TYL	\$ 188,787	194,275	COMPLETE JUL 2016				1,453	194,275	195,728	120,770
269-16 Guy Thimbles STI	\$ 270,000	-	Rescheduled to FY17.				-	-	-	270,000
270-16 Dampeners OHL TYL	\$ 99,900	-	Rescheduled to FY17.				8,696	-	8,696	99,900
271-16 Substation Upgrade WRG	\$ 45,025	-	Work underway Aug 2016.				-	-	-	45,025
272-17 Needle Assembly TYL	\$ 123,000	-	Repair needle position feedbk						-	123,000
273-17 XFMR Bushing TYL	\$ 70,000	-	Transformer bushing repair.						-	70,000
274-17 Emission Valve Pipe SWL	\$ 35,000	-	Repair corroding pipe.						-	35,000
275-17 Manifold TYL	\$ 38,700	-	Manifold on governor.						-	38,700
276-17 Schweitzer RTAC SWL-TYL	\$ 33,500	-	Replace relays with RTACs						-	33,500
277-17 Debris Boom SWL	\$ 284,000	10,262	Contract award-Worthington						10,262	584,200
<b>Total WIP R&amp;R Capital Projects</b>	<b>\$4,014,116</b>	<b>\$869,715</b>		<b>\$134,565</b>	<b>\$931,704</b>	<b>\$817,180</b>	<b>\$3,884,943</b>	<b>\$859,454</b>	<b>\$6,638,108</b>	<b>\$10,622,844</b>
<b>Totals INCLUDING 242-13 SWL</b>	<b>\$ 10,834,369</b>	<b>\$3,957,281</b>		<b>\$556,347</b>	<b>\$1,326,515</b>	<b>\$1,342,200</b>	<b>\$6,868,970</b>	<b>\$3,947,019</b>	<b>\$14,051,313</b>	<b>\$21,738,412</b>

Date	Num	Vendor	FY17 BUDGET \$	Expenditures	Description
<b>231-13 Helicopter Pads</b>			<b>\$500,000</b>	-	Helipad installation on the intertie and replacement of pads on Swan and Tyee lines. Prototype installed on the STI in November 2013. PND's helipad design approved by USFS in Dec 2014. Helipads manufactured by Touchdown Enterprises; installation began summer of 2015 (50 of 105 helipads installed) and was completed Jul 2016.  Project Management: Tongass Engineering (S.Henson) Manufacturing: Touchdown Enterprises Installation: BAM LLC FY14 CAPITALIZED \$114,921 (Prototypes) FY16 CAPITALIZED \$2,695,579 Installed Helipads Carroll Inlet to Shrimp Bay Shrimp Bay to Bradfield Canal Completion pending final report from Project Mgmt.
	\$ 57,731	<i>FY13 Expenditures</i>			
	\$ 98,391	<i>FY14 Expenditures</i>			
	\$ (114,921)	<i>FY14 Capitalize Prototypes</i>			
	\$ 533,783	<i>FY15 Expenditures</i>			
	\$ 2,181,644	<i>FY16 Capitalized Installed Helipads</i>			
	\$ (2,695,579)	<i>FY16 Capitalized Installed Helipads</i>			
	\$ 526,822	<i>FY17 Expenditures</i>			
07/01/16	1836	Ward Cove Industries LLC		1,125	
07/09/16	TO15111-5	BAM LLC		351,600	
07/22/16	51078038	Tetra Tech Inc		448	
07/31/16	1320133	Tongass Engineering		23,665	
08/01/16	1865	Ward Cove Industries LLC		1,125	
08/12/16	TO15111-6	BAM LLC		145,350	
08/26/16	51089674	Tetra Tech Inc		2,383	
09/01/16	1888	Ward Cove Industries LLC		1,125	
<b>Total 231-13 Helicopter Pads</b>				<b>587,872</b>	
<b>232-13 Communications Upgrade</b>			<b>\$83,000</b>	-	Satellite dishes and telephone systems installed at Swan Lake and SEAPA Office in December 2013. Tyee Lake satellite dish permitting approved by ADF&G and Corp of Engineers; DNR approval received Sep 2015. Equipment and fiber installed at Tyee. (S.Henson) CAPITALIZED SWL-SEAPA Office \$177,163
	\$ 12,160	<i>FY13 Expenditures</i>			
	\$ 186,520	<i>FY14 Expenditures</i>			
	\$ (177,163)	<i>FY14 Capitalize SWL-SEA Office</i>			
	\$ 15,995	<i>FY15 Expenditures</i>			
	\$ 165,667	<i>FY16 Expenditures</i>			
	\$ 3,159	<i>FY17 Expenditures</i>			
07/31/16	533	Tyee Plant Payroll		2,103	
08/26/16	9208922931	Grainger		765	
09/12/16		Safeway KTN		51	
09/30/16	52665	Sunrise Aviation Inc		240	
<b>Total 232-13 Communications Upgrade</b>				<b>206,338</b>	
<b>240-13 Cooling Water TYL</b>			<b>\$37,260</b>	-	Piping installation complete. Valves and control work remain and will be coordinated with System Control Improvements (RR258-15). Completion scheduled for CY16. (E.Wolfe) CAPITALIZED PIPE INSTALLATION \$94,165
	\$ 26,600	<i>FY13 Expenditures</i>			
	\$ 67,566	<i>FY14 Expenditures</i>			
	\$ (94,165)	<i>FY14 Pipe Install Capitalized</i>			
	\$ 1,250	<i>FY15 Expenditures</i>			
	\$ 62,024	<i>FY16 Expenditures</i>			
	\$ 612	<i>FY17 Expenditures</i>			
08/31/16	538			612	
<b>Total 240-13 Cooling Water TYL</b>				<b>63,886</b>	
<b>241-13 Stream Gauge TYL</b>			<b>\$200,000</b>	-	Logs cleared July 2013. Weir construction completed and helipad placed by Sep 2013. Grout work completed Apr 2016. Additional grout work, emergency shelter, stream gage and power network installation initiated in Sep 2016. (E.Schofield)  FY14 CAPITALIZED WEIR & HELIPAD \$598,332
	\$ 37,845	<i>FY13 Expenditures</i>			
	\$ 562,635	<i>FY14 Expenditures</i>			
	\$ (598,332)	<i>FY14 Weir &amp; Helipad Capitalized</i>			
	\$ 22,753	<i>FY15 Expenditures</i>			
	\$ 106,528	<i>FY16 Expenditures</i>			
	\$ 42,764	<i>FY17 Expenditures</i>			
07/12/16	80682	Futaris Inc		1,086	
07/25/16	16082	Foam Concepts LLC		7,341	
08/01/16	S246WRA01N	Samson Tug & Barge		449	
08/29/16	20630	Petro Marine Services-WRG		931	
08/29/16	20657	Petro Marine Services-WRG		124	
09/12/16		Safeway KTN		102	
09/19/16	TO17019-1	BAM LLC		32,250	
09/30/16	52665	Sunrise Aviation Inc		480	
<b>Total 241-13 Stream Gauge TYL</b>				<b>174,193</b>	

Date	Num	Vendor	FY17 BUDGET \$	Expenditures	Description
<b>242-13 Reservoir Expansion SWL</b>			<b>\$6,820,253</b>		Refer to report from Director of Special Projects. (E.Wolfe / E.Schofield)
	\$ 151,421	<i>FY12 Expenditures</i>			
	\$ 421,782	<i>FY13 Expenditures</i>			
	\$ 394,811	<i>FY14 Expenditures</i>			
	\$ 525,020	<i>FY15 Expenditures</i>			
	\$ 2,984,027	<i>FY16 Expenditures</i>			
	\$ 3,087,565	<i>FY17 Expenditures</i>			
07/01/16	16015	Crestchic, Inc.		15,638	
07/01/16	16270700	R&M Engineering-Ketchikan		4,989	
07/01/16	6000A	McMillen LLC		(2,226)	
07/05/16	35951	Taquan Air		935	
07/05/16		Safeway KTN		169	
07/07/16	93555	Pacific Airways Inc		880	
07/07/16	467	Best Western Landing Hotel		203	
07/07/16		KGB Airport		20	
07/09/16		KGB Airport		20	
07/10/16	36205	Taquan Air		935	
07/13/16		KGB Airport		20	
07/13/16	KDN20160713	Ketchikan Daily News		137	
07/14/16	526	Best Western Landing Hotel		150	
07/14/16	93788	Pacific Airways Inc		293	
07/14/16	93788	Pacific Airways Inc		293	
07/14/16	93788	Pacific Airways Inc		293	
07/15/16		Alaskan & Proud Mkt KTN		200	
07/15/16		Safeway KTN		41	
07/15/16		KGB Airport		32	
07/15/16	PST03	Pacific Pile and Marine		578,328	
07/16/16		Safeway KTN		140	
07/18/16		KGB Airport		26	
07/19/16	36519	Taquan Air		876	
07/20/16		Safeway KTN		30	
07/20/16		Safeway KTN		72	
07/20/16		KGB Airport		20	
07/20/16		Safeway KTN		162	
07/21/16	36584	Taquan Air		219	
07/21/16	36584	Taquan Air		219	
07/21/16		KGB Airport		20	
07/21/16	474	PML Environmental		71	
07/21/16	474	PML Environmental		945	
07/21/16	233723	Yanke Machine Shop		41,697	
07/23/16		Safeway KTN		82	
07/25/16	1028551	Madison Lumber & Hardware Inc		31	
07/25/16	93985	Pacific Airways Inc		880	
07/25/16		Safeway KTN		60	
07/26/16	2016287	Doyon's Landing LLC		1,200	
07/26/16	94034	Pacific Airways Inc		880	
07/27/16	INV2878	ABQ Industrial LP		2,702	
07/27/16	T40283	Tyler Rental, Inc.		1,154	
07/27/16		KGB Airport		20	
07/27/16	2372	Kuenz America Inc		202,463	
07/27/16	2373	Kuenz America Inc		321,440	
07/27/16	2373	Kuenz America Inc		39,200	
07/28/16	2016107	Pool Engineering, Inc.		669	
07/28/16	651	Best Western Landing Hotel		150	
07/29/16		Safeway KTN		84	
07/29/16	201607138	Kleinschmidt Associates Inc.		293	

Southeast Alaska Power Agency

WORK-IN-PROGRESS R&R Capital Projects as of Sep 30, 2016

Date	Num	Vendor	FY17 BUDGET \$	Expenditures	Description
07/31/16	1607S2	Glenn Brewer Consulting Engineer		2,700	
07/31/16	646234	Anderes Oil		3,911	
07/31/16	PH201607	Ketchikan City of 2933 P&H		80	
07/31/16	16071035	Alaska Broadcast Communications,		75	
07/31/16	16071036	Alaska Broadcast Communications,		75	
07/31/16	LI0U201607	Liou, Jim C.P.		2,000	
07/31/16	162109	R&M Engineering-Ketchikan		6,076	
07/31/16	533			12,581	
08/01/16		Safeway KTN		97	
08/01/16	16019	Crestchic, Inc.		42,650	
08/01/16	PH20160801	Wrangell City & Borough		6	
08/02/16		KGB Airport		20	
08/02/16	36944	Taquan Air		438	
08/02/16	36944	Taquan Air		438	
08/03/16	715	Best Western Landing Hotel		240	
08/03/16	16078	Boyer Towing, Inc.		3,543	
08/04/16	94267	Pacific Airways Inc		220	
08/04/16	94267	Pacific Airways Inc		220	
08/04/16	K41189	Tyler Rental, Inc.		3,250	
08/05/16	32837	Ketchikan Daily News		84	
08/05/16	741	Best Western Landing Hotel		229	
08/05/16		Alaskan & Proud Mkt KTN		28	
08/06/16		KGB Airport		20	
08/06/16		Safeway KTN		102	
08/07/16	106028	Madison Lumber & Hardware Inc		8	
08/07/16	6082	McMillen LLC		69,308	
08/07/16		KGB Airport		20	
08/08/16	94351	Pacific Airways Inc		880	
08/08/16		Ketchikan City of 2933 P&H		402	
08/09/16		Safeway KTN		42	
08/10/16	7058	Misty Fjords Air & Outfitting LLC		1,359	
08/10/16	525413	Petro Marine Services-KTN		514	
08/10/16		Safeway KTN		55	
08/10/16		Safeway KTN		54	
08/10/16		CC Salmon Falls Resort		430	
08/11/16	525418	Petro Marine Services-KTN		416	
08/11/16	805	Best Western Landing Hotel		474	
08/11/16	812	Best Western Landing Hotel		398	
08/11/16	816	Best Western Landing Hotel		398	
08/11/16		Safeway KTN		76	
08/11/16		Safeway KTN		110	
08/11/16	5	Kollgaard Eric		7,490	
08/12/16	7070	Misty Fjords Air & Outfitting LLC		657	
08/14/16	2016288	Doyon's Landing LLC		1,200	
08/14/16		Safeway KTN		47	
08/15/16	WOL201608	.Wolfe, Eric		136	
08/15/16	PST04	Pacific Pile and Marine		462,742	
08/15/16	PST04	Pacific Pile and Marine		173,486	
08/15/16	FA01	Pacific Pile and Marine		1,265	
08/16/16	COP03	Pacific Pile and Marine		16,055	
08/16/16	K43356	Tyler Rental, Inc.		285	
08/16/16	94579	Pacific Airways Inc		440	
08/17/16	37364	Taquan Air		219	
08/17/16	T44072	Tyler Industrial Supply		11	
08/17/16		Tatsudas IGA		58	
08/18/16	94600	Pacific Airways Inc		220	
08/18/16	94600	Pacific Airways Inc		220	

**Southeast Alaska Power Agency**

**WORK-IN-PROGRESS R&R Capital Projects as of Sep 30, 2016**

Date	Num	Vendor	FY17 BUDGET \$	Expenditures	Description
08/18/16		Walmart KTN - CC		32	
08/19/16	109488	Madison Lumber & Hardware Inc		68	
08/19/16	T44606	Tyler Rental, Inc.		397	
08/19/16	94628	Pacific Airways Inc		293	
08/19/16	94628	Pacific Airways Inc		293	
08/19/16	94628	Pacific Airways Inc		293	
08/20/16		Ketchikan Gateway Borough		20	
08/20/16	KDN20160820	Ketchikan Daily News		137	
08/21/16	526610	Petro Marine Services-KTN		463	
08/21/16		Safeway KTN		84	
08/22/16	110150	Madison Lumber & Hardware Inc		6	
08/22/16		Alaskan & Proud Mkt KTN		81	
08/22/16	151404	Bay Company Enterprises, LLC		2,627	
08/23/16	37631	Taquan Air		438	
08/23/16	37631	Taquan Air		438	
08/24/16	980	Best Western Landing Hotel		191	
08/25/16	94741	Pacific Airways Inc		440	
08/25/16	94741	Pacific Airways Inc		440	
08/25/16		Safeway KTN		50	
08/25/16	985	Best Western Landing Hotel		203	
08/26/16	234064	Yanke Machine Shop		892	
08/26/16	7176	Misty Fjords Air & Outfitting LLC		329	
08/26/16	7176	Misty Fjords Air & Outfitting LLC		329	
08/26/16	T45663	Tyler Industrial Supply		177	
08/27/16	250844	Ketchikan City of 2933 P&H		24	
08/28/16	527449	Petro Marine Services-KTN		486	
08/28/16		Safeway KTN		58	
08/29/16	39955	PC Hydraulics		6,275	
08/29/16	T46086	Tyler Industrial Supply		26	
08/30/16	114134766011	Dowl, LLC		1,484	
08/30/16		Ketchikan Gateway Borough		20	
08/30/16		Ketchikan Gateway Borough		6	
08/31/16	657324	Anderes Oil		1,432	
08/31/16	TO170161	BAM LLC		11,040	
08/31/16	1608S1	Glenn Brewer Consulting Engineer		4,693	
08/31/16	1608S2	Glenn Brewer Consulting Engineer		600	
08/31/16	PH201608	Ketchikan City of 2933 P&H		66	
08/31/16	482	PML Environmental		1,293	
08/31/16	162109003	R&M Engineering-Ketchikan		4,165	
08/31/16	T46131	Tyler Industrial Supply		405	
08/31/16	538			14,155	
08/31/16	KDR201608	de Rubertis, Kim		6,119	
08/31/16	2480	Kuenz America Inc		6,400	
08/31/16	2481	Kuenz America Inc		6,600	
09/01/16	94889	Pacific Airways Inc		880	
09/01/16	T46599	Tyler Industrial Supply		711	
09/02/16	1054	Best Western Landing Hotel		203	
09/04/16	6148	McMillen LLC		1,280	
09/04/16	6148	McMillen LLC		37,759	
09/05/16	528234	Petro Marine Services-KTN		462	
09/05/16		CC Vendors - Lighthouse Service		55	
09/05/16		Safeway KTN		73	
09/05/16		Safeway KTN		191	
09/06/16	1609168061	Pacific Pride		224	
09/06/16		Safeway KTN		68	
09/08/16	16023	Crestchic, Inc.		42,650	
09/08/16	528476	Petro Marine Services-KTN		501	
09/09/16		Safeway KTN		86	



**Southeast Alaska Power Agency**

**WORK-IN-PROGRESS R&R Capital Projects as of Sep 30, 2016**

<b>Date</b>	<b>Num</b>	<b>Vendor</b>	<b>FY17 BUDGET \$</b>	<b>Expenditures</b>	<b>Description</b>
09/10/16	95018	Pacific Airways Inc		880	
09/10/16		CC KTN Airport		20	
09/10/16		Alaskan & Proud Mkt KTN		92	
09/11/16	95023	Pacific Airways Inc		440	
09/13/16	115563	Madison Lumber & Hardware Inc		70	
09/13/16	95096	Pacific Airways Inc		440	
09/13/16		Safeway KTN		32	
09/14/16	DWNPMT17037	Swagelok NW Fluid System Technol		20,986	
09/14/16	5114891	Swagelok NW Fluid System Technol		9,687	
09/14/16	715463	Anderes Oil		456	
09/14/16		CC KTN Airport		20	
09/14/16	KDN20160914	Ketchikan Daily News		137	
09/15/16	TO17017	BAM LLC		24,500	
09/15/16	PST05	Pacific Pile and Marine		783,126	
09/15/16	95117	Pacific Airways Inc		440	
09/15/16		Safeway KTN		80	
09/16/16	S261KET29N	Samson Tug & Barge		158	
09/16/16	1802406341	USDA Forest Service		13,235	
09/17/16	82100085773	Les Schwab		24	
09/18/16		Safeway KTN		242	
09/19/16	253146	Ketchikan City of 2933 P&H		26	
09/19/16		Walmart KTN - CC		40	
09/20/16	95164	Pacific Airways Inc		440	
09/20/16		Alaskan & Proud Mkt KTN		152	
09/20/16	4024438	Swagelok NW Fluid System Technol		15,785	
09/22/16	S262KET32N	Samson Tug & Barge		95	
09/22/16		Safeway KTN		139	
09/23/16	529763	Petro Marine Services-KTN		500	
09/23/16		Alaska Air		11	
09/24/16	1141347660102	Dowl, LLC		1,415	
09/25/16	16091032	Alaska Broadcast Communications,		38	
09/25/16	16091033	Alaska Broadcast Communications,		38	
09/25/16		Safeway KTN		91	
09/25/16		CC KTN Airport		6	
09/26/16	242476	Service Auto Parts		33	
09/26/16	T50571	Tyler Industrial Supply		126	
09/26/16	721929	Anderes Oil		12	
09/26/16		CC KTN Airport		6	
09/26/16		Alaskan & Proud Mkt KTN		46	
09/26/16		CC Hotel Misc		25	
09/26/16	530295	Petro Marine Services-KTN		2,561	
09/26/16	530297	Petro Marine Services-KTN		7,387	
09/27/16	16111	Boyer Towing, Inc.		550	
09/27/16		CC KTN Airport		20	
09/27/16		CC Hotel Misc-Doubletree SEA		209	
09/27/16	95298	Pacific Airways Inc		1,055	
09/28/16		CC Vendors - Tool Town		130	
09/28/16		Alaskan & Proud Mkt KTN		36	
09/28/16	530080	Petro Marine Services-KTN		434	
09/29/16	K162610IN	Scholck Mechanical Contractors I		198	
09/30/16	WOL201609	.Wolfe, Eric		22	
09/30/16	669881	Anderes Oil		631	
09/30/16		CC KTN Airport		20	
09/30/16	1609S2	Glenn Brewer Consulting Engineer		800	
09/30/16	P&H201609	Ketchikan City of 2933 P&H		111	
09/30/16	162109004	R&M Engineering-Ketchikan		4,393	
<b>Total 242-13 Reservoir Expansion SWL</b>				<b>7,564,627</b>	

Date	Num	Vendor	FY17 BUDGET \$	Expenditures	Description
<b>248-14 Lathe TYL</b>			<b>\$0</b>		Working with legal to remedy vendor down-payment with
06/30/14	\$16,823	<i>FY14 Expenditures</i>		-	no delivery of goods. Lathe from new vendor (Grizzly
	(\$16,823)	<i>FY15 Expenditures</i>		-	Industrial). Machine-mount not delivered until July.
	\$41,441	<i>FY16 Expenditures</i>			(S.Henson)
	(\$41,441)	<i>Capitalized FY16</i>			
	\$576	<i>FY17 Expenditures</i>			IN SERVICE OCT 2016
07/21/16	850121701	Grizzly Industrial, Inc.		576	
<b>Total 248-14 Lathe TYL</b>				<b>576</b>	
<b>249-14 Marine Term Gage/CommT</b>			<b>\$0</b>		Pressure transducers, replacement gauges and software
	\$ 126,111	<i>FY15 Expenditures</i>			design to integrate marine terminal data. Engineering
	\$ 161,353	<i>FY16 Expenditures</i>			complete, solar panels and all materials received. Installed
	\$ (234,806)	<i>FY16 Capitalization</i>			and operational except failed batter at site.
	\$ 43,104	<i>FY17 Expenditures</i>			Capitalized all but radio portion in FY16. To be integrated
06/30/16	524	<i>FY16 Capitalization</i>		(234,806)	with SCADA in FY17. (S.Henson)
07/01/16	46427	Petro Marine Services-WRG		228	
07/05/16	1563	Alpine Mini Mart		36	
07/09/16	391810	Ottesen's Inc		64	
07/09/16	50245	Petro Marine Services-WRG		172	
07/11/16	3853	Stikine Inn		904	
07/12/16	80682	Futaris Inc		1,086	
07/18/16	30964001	Wrangell City & Borough		3,120	
07/19/16	392419	Ottesen's Inc		40	
07/21/16	392535	Ottesen's Inc		37	
07/21/16	392538	Ottesen's Inc		43	
07/31/16	52621	Sunrise Aviation Inc		435	
07/31/16	533	Payroll		3,155	
08/08/16	1575	Alpine Mini Mart		67	
08/31/16	30553	Temsco Helicopters, Inc.		1,879	
08/31/16	538	Payroll		1,143	
08/31/16	16161	Segrity LLC		6,136	
08/31/16	3990	Stikine Inn		432	
09/02/16	30568	Temsco Helicopters, Inc.		1,863	
09/02/16	3993	Stikine Inn		440	
09/13/16	N6578SUPP1	Twin Eagle Consulting, LLC		6,919	
09/30/16	543	Payroll		1,143	
09/30/16	543	Payroll		13,763	
<b>Total 249-14 Marine Term Gage/Co</b>				<b>95,762</b>	
<b>252-14 Submarine SpliceSpareTYL</b>			<b>\$213,000</b>		Existing spares evaluated to determine portions that require
	\$ -	<i>FY16 Expenditures</i>		-	replacement following specs recommended by Poseidon
<b>Total 252-14 Submarine Splice SpareTYL</b>				<b>-</b>	Engineering. Developing RFP for bid. (S.Henson)
<b>256-15 Alarm Trip Protection SWL-</b>			<b>\$53,011</b>		Two-year project; review sensors and relays, reliability and
	\$ 611	<i>FY15 Expenditures</i>			critical protection issue. Board awarded to Segrity (Mar
	\$ 157,765	<i>FY16 Expenditures</i>			2015). Scheduled for completion in CY16. (E.Wolfe)
	\$ 37,403	<i>FY17 Expenditures</i>			
08/21/16	3975	Stikine Inn		163	
08/31/16	52648	Sunrise Aviation Inc		870	
09/08/16	16160	Segrity LLC		32,590	
09/30/16	16169	Segrity LLC		3,780	
<b>Total 256-15 Alarm Trip Protection SWL-TYL</b>				<b>195,779</b>	

Southeast Alaska Power Agency

WORK-IN-PROGRESS R&R Capital Projects as of Sep 30, 2016

Date	Num	Vendor	FY17 BUDGET \$	Expenditures	Description
<b>258-15 System Control Improve</b>			<b>\$38,843</b>		Two-year project to increase reliability at both plants; coordinate facilities' operations. Board awarded to Segrity (Mar 2015). Scheduled for completion in CY16. (E.Wolfe)
	\$ 28,766	<i>FY15 Expenditures</i>			
	\$ 44,194	<i>FY16 Expenditures</i>			
	\$ 2,973	<i>FY17 Expenditures</i>			
07/31/16	16155	Segrity LLC		1,083	
08/31/16	16162	Segrity LLC		953	
09/30/16	16168	Segrity LLC		938	
<b>Total 258-15 System Control Improvements SWL-TYL</b>				<b>75,932</b>	
<b>259-15 Turbine Shutoff Valves TYL</b>			<b>\$35,000</b>		Implementation of recommendations from HDR engineering review. Toroidal cylinder repair to be completed in FY17. (E.Wolfe)
	\$ 84,857	<i>FY15 Expenditures</i>			
	\$170,774	<i>FY16 Expenditures</i>			
	(\$255,631)	<i>Capitalized FY16</i>			
	-	<i>FY17 Expenditures</i>			
<b>Total 259-15 Turbine Shutoff Valve TYL</b>				<b>-</b>	
<b>260-15 Exciters SWL</b>			<b>\$415,751</b>		Replaces 1997 exciters; coordinate with RR261-15. Equipment on site at Swan Lake. Awaiting installation window. (E. Schofield)
	\$ 10,104	<i>FY15 Expenditures</i>		-	
	\$ 374,052	<i>FY16 Expenditures</i>			
	\$ 3,081	<i>FY17 Expenditures</i>			
07/31/16	16156	Segrity LLC		1,921	
08/31/16	16163	Segrity LLC		1,160	
<b>Total 260-15 Exciters SWL</b>				<b>387,237</b>	
<b>261-15 Generator Switch Gear SWI</b>			<b>\$484,743</b>		Replace existing gear; includes spare breaker. Coordinate with RR260-15. Equipment delivered onsite at SWL, awaiting installation window. (E.Schofield)
	\$ 9,773	<i>FY15 Expenditures</i>		-	
	\$ 388,390	<i>FY16 Expenditures</i>			
	\$ 3,081	<i>FY17 Expenditures</i>			
07/31/16	16156	Segrity LLC		1,921	
08/31/16	16163	Segrity LLC		1,160	
<b>Total 261-15 Generator Switch Gear SWL</b>				<b>401,244</b>	
<b>263-16 CTs-Relay WRG Circuit Swt</b>			<b>\$165,000</b>		Additional protection-control relays and current-sensing equipment in the Wrangell switchyard. Electrical design being finalized. (Electrical Power Systems). (S.Henson)
	\$ 20,963	<i>FY16 Expenditures</i>			
	\$ 1,439	<i>FY17 Expenditures</i>			
09/30/16	10956	Electric Power Systems Inc.		1,439	
<b>Total 263-16 CTs-Relay WRG Circuit Sw</b>				<b>22,402</b>	
<b>265-16 Marker Balls OHL TYL</b>			<b>\$600,596</b>		Replacement of original marker balls on the Tyeve transmission line. Marker balls inventoried; Northern Powerline Constructors (Anchorage) successful bidder. Scheduled for June 2017. (S.Henson)
	\$ 164	<i>FY17 Expenditures</i>			
07/21/16	3315739	Daily Journal of Commerce		77	
07/21/16	I01389867	Alaska Dispatch News		87	
<b>Total 265-16 Marker Balls OHL TYL</b>				<b>164</b>	
<b>267-16 Roof-Siding Housing TYL</b>			<b>\$188,787</b>		Replace roofing on Tyeve Lake employee housing (3) and crew quarters; vinyl siding on employee housing (3). Board awarded to H Construction. COMPLETE JULY 2016. (S.Henson)
	\$ 1,453	<i>FY16 Expenditures</i>			
	\$ 194,275	<i>FY17 Expenditures</i>			
07/18/16	16049-01	H Construction LLC		160,000	
07/25/16	16049-02	H Construction LLC		34,275	
<b>Total 267-16 Roof-Siding Housing TYL</b>				<b>195,728</b>	

Southeast Alaska Power Agency

WORK-IN-PROGRESS R&R Capital Projects as of Sep 30, 2016

Date	Num	Vendor	FY17 BUDGET \$	Expenditures	Description
<b>269-16 Guy Thimbles STI</b>			<b>\$270,000</b>		Replace guy thimbles on STI. Rescheduled to FY17. (S.Henson)
	\$	-		<i>FY17 Expenditures</i>	
<b>Total 269-16 Guy Thimbles STI</b>				<b>-</b>	
<b>270-16 Dampeners OHL TYL</b>			<b>\$99,900</b>		Replacement of 180 dampeners on Tyee transmission line. Rescheduled to FY17. (S.Henson)
	\$	8,696		<i>FY16 Expenditures</i>	
	\$	-		<i>FY17 Expenditures</i>	
<b>Total 270-16 Dampeners OHL TYL</b>				<b>8,696</b>	
<b>271-16 Substation Upgrade WRG</b>			<b>\$45,025</b>		Wrangell substation upgrades completed August 2016 (WML&P). Billing received in October. (S.Henson)
	\$	-		<i>FY17 Expenditures</i>	
<b>Total 271-16 Substation Upgrade WRG</b>				<b>-</b>	
<b>272-17 Needle Assembly TYL</b>			<b>\$123,000</b>		Repair to needle position feedback assembly. (Henson)
	\$	-		<i>FY17 Expenditures</i>	
<b>Total 272-17 Needle Assembly TYL</b>				<b>-</b>	
<b>273-17 XFMR Bushing TYL</b>			<b>\$70,000</b>		Replace STI transformer bushing at Tyee substation. Spring 2017. (Henson)
	\$	-		<i>FY17 Expenditures</i>	
<b>Total 273-17 XFMR Bushing TYL</b>				<b>-</b>	
<b>274-17 Emission Valve Pipe SWL</b>			<b>\$35,000</b>		Insert pipe liner to reinforce air emission valve piping at SWL. (Schofield)
	\$	-		<i>FY17 Expenditures</i>	
<b>Total 274-17 Emission Valve Pipe SWL</b>				<b>-</b>	
<b>275-17 Manifold Replace. TYL</b>			<b>\$38,700</b>		Replace manifold on governor at Tyee Lake. (Henson)
	\$	-		<i>FY17 Expenditures</i>	
<b>Total 275-17 Manifold Replacement TYL</b>				<b>-</b>	
<b>276-17 Schweitzer RTAC Upgrades</b>			<b>\$33,500</b>		Replace existing relays with RTACs. (Henson)
	\$	-		<i>FY17 Expenditures</i>	
<b>Total 276-17 Schweitzer RTAC Upgrade</b>				<b>-</b>	
<b>277-17 Debris Boom SWL</b>			<b>\$284,000</b>		Replacement of failed debris boom and anchors at SWL. Bid awarded to Worthington, Sep 2016. (Schofield)
	\$	10,262		<i>FY17 Expenditures</i>	
07/01/16	6000A	McMillen LLC		2,226	
08/07/16	6082	McMillen LLC		7,880	
09/03/16	62012	Pilot Publishing, Inc.		84	
09/03/16	62004	Wrangell Sentinel		72	
<b>Total 277-17 Debris Boom SWL</b>				<b>10,262</b>	
<b>Total WIP R&amp;R Capital Projects</b>			<b>\$10,834,369</b>	<b>\$ 9,990,697</b>	

\* Total Work-In-Progress includes deductions for capitalized projects, and therefore do not match the Total Expenditures on the Summary page.

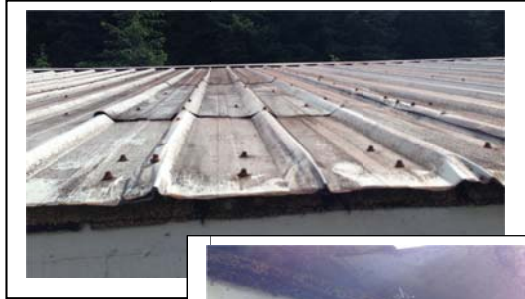


# CLOSED RR267-16 ROOFING & SIDING TYL

<b>Project</b>	<b>ROOFING &amp; SIDING - Tyee Lake</b>		
<b>Description</b>	Replace roofing on four structures and add siding to three.		
Cost Estimate:	\$190,000	Start Date:	May, 2016
Actual Cost:	<b>\$194,275</b>	Completion Date:	<b>JUL, 2016</b>
Project Management: Steve Henson			
<b>Project Discussion</b>			
<p>Metal roofing on the employee houses (3) and crew quarters was installed over the original asphalt shingles over 20 years ago. The roofing has deteriorated on all four of the structures, and there have been leaks over the years. This project will remove all metal and asphalt shingles and tarpaper, and roof sheeting will be checked for rot. Existing roofs will be replaced with clip rib industrial grade roofing that carries a 30-year warranty. Vinyl siding will be added to the employee houses to halt deterioration of the existing T1-11. The crew quarters currently has vinyl siding.</p> <p>Bid award to H Construction was approved during the April 28, 2016 Board Meeting. Scheduled for mid-July completion.</p>			

PROJECT COST ESTIMATE			EXPENDITURES	
DESCRIPTION	COST EST.	VENDOR	FY16	\$1,213
Mobilization	\$35,000	H Construction	<b>Carry-Forward FY17</b>	\$194,515
Siding, Doors & Roofs	125,000			
Completion, Demobe	30,000			
Total	\$190,000		Project Total	\$195,728
<b>Project Cost Estimate Discussion</b>				
<p>The original estimate of \$120,770 for materials and labor was provided by a local contractor who visited the site plus contingency to cover unseen rot or damage to the roof sheeting. Based upon the bids received, which did not include local contractors, the Board approved an increased budget to \$190K on April 28, 2016. Change Order in the amount of \$4,275 authorized for work not included in original scope. The change order consisted of repairs to two of the roofs where hidden rot was encountered under the old roofing.</p>				

# CLOSED RR267-16 ROOFING & SIDING TYL



**BEFORE**

**AFTER**





**SOUTHEAST ALASKA  
POWER AGENCY**

---

**RR242 - SWAN LAKE RESERVOIR  
EXPANSION PROJECT  
FINANCIAL SUMMARY - OCT 21, 2016\***

**APPROVED BUDGET**

---

**\$ 11,115,568** FY17 R&R Budget

**Expenditures by Fund Source**

---

\$ 719,746	SEAPA Funds Expended
578,000	Grant - DCCED13
3,320,000	Grant - DCCED15
3,004,586	Construction Fund
<b><u>\$ 7,622,332</u></b>	<b>Total Expenditures</b>

**Remaining Project Budget**

---

\$ 3,320,963	Open Task Orders
120,431	Budgeted Contingency & Direct Expense
<b><u>\$ 3,441,394</u></b>	<b>Remaining Budget</b>

**Funding Sources for Remaining Project**

---

\$ 2,965,644	Construction Funds Available
475,750	Other SEAPA Funds (R&R)
<b><u>\$ 3,441,394</u></b>	<b>Total Expenditures</b>

\*The last check run in October took place on October 21.

# SOUTHEAST ALASKA POWER AGENCY - DISBURSEMENTS

Accounts	Total
Revenue Fund . . . . .	\$ 1,291,764.81
R&R Fund . . . . .	\$ 249,387.85
Construction Fund . . . . .	\$ 1,674,689.48
New Generation Fund . . . . .	\$ 156.00
TOTAL	\$ 3,215,998.14

**SUGGESTED MOTION**

I move to approve disbursements for the months of September & October 2016  
in the amount of \$3,215,998.14.

This list outlines significant expenditures paid during this period:			
BAM LLC	- Helipad installation (RR231), Plunge pool survey & fencing at SWL (RR242)	\$	213,140
Crestchic	- Load bank rental		85,300
Marsh USA	- Insurance premiums		523,519
McMillen LLC	- SWL Engineering & FERC compliance (RR242)		116,227
Pacific Pile & Marine	- SWL Reservoir expansion project construction (RR242)		1,436,674
Wells Fargo	- Principal & Interest for 2009 Series and 2015 Series Bonds		265,116

## SEPTEMBER & OCTOBER 2016

Invoice No.	Company (Vendor)	Revenue Fund	R&R Fund	Construction	New Gen
4889427	4Imprint, Inc.	763.43			
84307320112	AK ADF&G	2,978.77			
16081387	Alaska Broadcast Communications, Inc.	30.00			
16081388	Alaska Broadcast Communications, Inc.	30.00			
16081440	Alaska Broadcast Communications, Inc.	30.00			
16081441	Alaska Broadcast Communications, Inc.	30.00			
16081493	Alaska Broadcast Communications, Inc.	30.00			
16081494	Alaska Broadcast Communications, Inc.	30.00			
16081550	Alaska Broadcast Communications, Inc.	30.00			
16081551	Alaska Broadcast Communications, Inc.	30.00			
16091328	Alaska Broadcast Communications, Inc.	30.00			
16091329	Alaska Broadcast Communications, Inc.	30.00			
16091375	Alaska Broadcast Communications, Inc.	30.00			
16091376	Alaska Broadcast Communications, Inc.	30.00			
16091422	Alaska Broadcast Communications, Inc.	30.00			
16091423	Alaska Broadcast Communications, Inc.	30.00			
16091032	Alaska Broadcast Communications, Inc.			37.50	
16091033	Alaska Broadcast Communications, Inc.			37.50	
16091472	Alaska Broadcast Communications, Inc.	30.00			
16091473	Alaska Broadcast Communications, Inc.	30.00			
APCM201608	Alaska Permanent Capital Inc	1,665.02			
APCM201609	Alaska Permanent Capital Inc	1,667.19			
1583	Alpine Mini Mart	142.98			
1594	Alpine Mini Mart	52.40			
657324	Anderes Oil			1,431.59	
715463	Anderes Oil			456.11	
721929	Anderes Oil			12.32	
669881	Anderes Oil			630.77	
728013	Anderes Oil			12.63	
14229	Angerman's Inc	94.95			
15437	Angerman's Inc	349.95			
C15464	Angerman's Inc	(349.95)			



# SOUTHEAST ALASKA POWER AGENCY - DISBURSEMENTS

SEPTEMBER & OCTOBER 2016

Invoice No.	Company (Vendor)	Revenue Fund	R&R Fund	Construction	New Gen
5747	Arrowhead LP Gas WRG	57.49			
2118	Ascent Law Partners LLP	7,700.00			
2165	Ascent Law Partners LLP	9,491.00			
TO15111-6	BAM LLC		145,350.40		
TO170161	BAM LLC			11,040.00	
TO17017	BAM LLC			24,500.00	
TO17019-1	BAM LLC		32,250.00		
51897	Bay Company Enterprises, LLC	22.05			
51962	Bay Company Enterprises, LLC	44.10			
151378	Bay Company Enterprises, LLC	751.73			
51429	Bay Company Enterprises, LLC	151.20			
151404	Bay Company Enterprises, LLC		2,627.02		
51498	Bay Company Enterprises, LLC	1,059.90			
51503	Bay Company Enterprises, LLC	163.80			
51559	Bay Company Enterprises, LLC	163.80			
51628	Bay Company Enterprises, LLC	138.75			
805	Best Western Landing Hotel	-		473.84	
808	Best Western Landing Hotel	1,252.46			
809	Best Western Landing Hotel	1,342.12			
812	Best Western Landing Hotel	-		397.50	
816	Best Western Landing Hotel	-		397.50	
980	Best Western Landing Hotel	-		382.50	
984	Best Western Landing Hotel	207.20			
985	Best Western Landing Hotel			202.50	
1054	Best Western Landing Hotel			202.50	
BOD201609	Best Western Landing Hotel	1,310.45			
1107	Best Western Landing Hotel	418.49			
1108	Best Western Landing Hotel	720.74			
1109	Best Western Landing Hotel	757.26			
1137	Best Western Landing Hotel	783.96			
1138	Best Western Landing Hotel	709.62			
1139	Best Western Landing Hotel	803.41			
1211	Best Western Landing Hotel	250.16			
16078	Boyer Towing, Inc.	1,772.00		3,543.00	
16111	Boyer Towing, Inc.			550.00	
38675	Buness Bros. Inc.	784.00			
CAM201610	Cambria Properties LLC	1,475.00			
CAM201611	Cambria Properties LLC	1,475.00			
234563	City Market	(7.49)			
263999	City Market	67.41			
260500	City Market	24.93			
260772	City Market	90.10			
282483	City Market	182.76			
47005	Commonwealth Associates, Inc.	265.50			
47340	Commonwealth Associates, Inc.	265.50			
82	ConnectHR, LLC	1,680.00			
97	ConnectHR, LLC	35.00			
24694	Control Engineers	72.50			
16023	Crestchic, Inc.			42,650.00	
16024	Crestchic, Inc.			42,650.00	
KDR201608	de Rubertis, Kim			6,119.00	
11210	DHittle & Associates, Inc.	3,440.00			
114134766011	Dowl, LLC	-		1,484.17	
1141347660102	Dowl, LLC			1,415.00	
9122016	E&E Dining	1,666.80			
10440	Electric Power Constructors	3,100.00			

# SOUTHEAST ALASKA POWER AGENCY - DISBURSEMENTS

## SEPTEMBER & OCTOBER 2016

Invoice No.	Company (Vendor)	Revenue Fund	R&R Fund	Construction	New Gen
10956	Electric Power Systems Inc.		1,439.25		
279024	Frontier Shipping & Copyworks	68.70			
FS4058318IN	Full Source	563.47			
80680	Futaris Inc	5,703.00			
80722	Futaris Inc	6,145.00			
80767	Futaris Inc	6,145.00			
80779	Futaris Inc	10,284.00			
80811	Futaris Inc	6,145.00			
SEAPA00616	G2 Risk Consulting	2,096.25			
77954	GCSIT Solutions			2,114.00	
1608S1	Glenn Brewer Consulting Engineer			4,693.38	
1608S2	Glenn Brewer Consulting Engineer			600.00	
1609S2	Glenn Brewer Consulting Engineer			800.00	
9197013593	Grainger	668.60			
9197013601	Grainger	1,940.95			
9208922923	Grainger	934.98			
9208922931	Grainger	474.85	765.00		
9209074864	Grainger	105.60			
8324225.4	Grizzly Industrial, Inc.		589.53		
355974	Hammer & Wikan	299.11			
391754	Hammer & Wikan	32.48			
4745	I Even Do Windows	300.00			
4815	I Even Do Windows	300.00			
250844	Ketchikan City of 2933 P&H	-		24.26	
PH201608	Ketchikan City of 2933 P&H			66.30	
253146	Ketchikan City of 2933 P&H			26.00	
P&H201609	Ketchikan City of 2933 P&H			110.54	
KDN20160820	Ketchikan Daily News			137.44	
32931	Ketchikan Daily News	67.35			
KDN20160914	Ketchikan Daily News			137.44	
KGB201610	Ketchikan Gateway Borough	3,984.75			
KGB201611	Ketchikan Gateway Borough	3,984.75			
KTNHS2016	Ketchikan High School	500.00			
16080093	KFMJ Radio, LLC	644.00			
16090104	KFMJ Radio, LLC	616.00			
5	Kollgaard Eric			7,490.23	
2480	Kuenz America Inc			6,400.00	
2481	Kuenz America Inc			6,600.00	
82100084125	Les Schwab	1,099.96			
82100085773	Les Schwab			24.36	
L&H201609	Liv and Heidis Kjokken Catering	701.50			
LK201610	LK Storage & Rentals	78.00			78.00
LK201611	LK Storage & Rentals	78.00			78.00
96810	LNM Services	72.90			
6327745	Lynden Transport, Inc.			248.16	
109488	Madison Lumber & Hardware Inc	-		68.20	
110150	Madison Lumber & Hardware Inc	-		6.49	
115563	Madison Lumber & Hardware Inc			69.99	
120485	Madison Lumber & Hardware Inc			221.72	
122558	Madison Lumber & Hardware Inc	104.99			
288849328776	Marsh USA Inc.	1,601.00			
288840132077	Marsh USA Inc.	3,533.00			
288842842740	Marsh USA Inc.	24,250.00			
288848173887	Marsh USA Inc.	118,495.00			
288841187695	Marsh USA Inc.	190,678.00			
288841362661	Marsh USA Inc.	54,218.00			

# SOUTHEAST ALASKA POWER AGENCY - DISBURSEMENTS

SEPTEMBER & OCTOBER 2016

Invoice No.	Company (Vendor)	Revenue Fund	R&R Fund	Construction	New Gen
288841621713	Marsh USA Inc.	7,347.00			
288848394723	Marsh USA Inc.	60,000.00			
288846331300	Marsh USA Inc.	63,365.00			
288842723338	Marsh USA Inc.	32.00			
413	May Engineering Services LLC	5,412.50			
6082	McMillen LLC	-		77,187.77	
6148	McMillen LLC			39,039.19	
5562	Meridian Environmental	2,280.00			
7176	Misty Fjords Air & Outfitting LLC	-		657.00	
3647	Nordic House Bed & Breakfast	300.00			
18417	Northwest Public Power Assn	1,140.00			
16090630	NRECA 798185 Group Ins	18,261.16			
16100630	NRECA 798185 Group Ins	18,261.16			
16110630	NRECA 798185 Group Ins	18,261.16			
16090630A	NRECA 798324 Group Ins Admin	1,617.51			
16100630A	NRECA 798324 Group Ins Admin	1,617.51			
16110630A	NRECA 798324 Group Ins Admin	1,617.51			
16098044A	NRECA 798330 RSP Admin	674.17			
16108044A	NRECA 798330 RSP Admin	674.17			
16118043A	NRECA 798330 RSP Admin	674.17			
393924	Ottesen's Inc	10.99			
393989	Ottesen's Inc	14.99			
394166	Ottesen's Inc	29.94			
394190	Ottesen's Inc	30.32			
394204	Ottesen's Inc	37.45			
394565	Ottesen's Inc	9.98			
394841	Ottesen's Inc	20.89			
395268	Ottesen's Inc	15.16			
395476	Ottesen's Inc	8.49			
396162	Ottesen's Inc	149.75			
396563	Ottesen's Inc	79.92			
396718	Ottesen's Inc	79.98			
C396725	Ottesen's Inc	(39.99)			
94579	Pacific Airways Inc	440.00		440.00	
94600	Pacific Airways Inc	-		440.00	
94628	Pacific Airways Inc	-		880.00	
94741	Pacific Airways Inc	-		880.00	
94889	Pacific Airways Inc			880.00	
95018	Pacific Airways Inc			880.00	
95023	Pacific Airways Inc			440.00	
95096	Pacific Airways Inc			440.00	
95109	Pacific Airways Inc			440.00	
95117	Pacific Airways Inc	440.00		440.00	
95149	Pacific Airways Inc	440.00			
95164	Pacific Airways Inc	440.00		440.00	
95298	Pacific Airways Inc			1,055.00	
95328	Pacific Airways Inc	880.00			
95347	Pacific Airways Inc			440.00	
95401	Pacific Airways Inc			440.00	
FA01	Pacific Pile and Marine	-		1,264.65	
PST04	Pacific Pile and Marine	173,485.67		462,742.33	
COP03	Pacific Pile and Marine	-		16,055.00	
PST05	Pacific Pile and Marine			783,126.05	
1609168061	Pacific Pride			223.92	
2454	Pacific Wings Inc.	990.00			
2470	Pacific Wings Inc.	618.00			

# SOUTHEAST ALASKA POWER AGENCY - DISBURSEMENTS

SEPTEMBER & OCTOBER 2016

Invoice No.	Company (Vendor)	Revenue Fund	R&R Fund	Construction	New Gen
39955	PC Hydraulics	-		6,275.00	
34985	Petersburg Bottled Gas	286.00			
170418	Petersburg Motors Inc	209.20			
526121	Petro Marine Services-KTN	407.11			
526610	Petro Marine Services-KTN	-		463.17	
527449	Petro Marine Services-KTN	-		486.20	
528234	Petro Marine Services-KTN			461.51	
528476	Petro Marine Services-KTN			501.33	
529763	Petro Marine Services-KTN			499.70	
530295	Petro Marine Services-KTN			2,560.50	
530297	Petro Marine Services-KTN			7,386.75	
530080	Petro Marine Services-KTN			434.16	
530397	Petro Marine Services-KTN	23.92		449.10	
530434	Petro Marine Services-KTN			425.81	
530956	Petro Marine Services-KTN			433.46	
51705	Petro Marine Services-WRG	172.66			
30618	Petro Marine Services-WRG	165.87			
20173	Petro Marine Services-WRG	323.74			
20492	Petro Marine Services-WRG	168.13			
20630	Petro Marine Services-WRG		931.31		
20657	Petro Marine Services-WRG		124.41		
20889	Petro Marine Services-WRG	182.15			
62012	Pilot Publishing, Inc.	66.50	84.00		
482	PML Environmental	2,302.50		1,292.88	
1714-1747	Pure Alaskan Water	42.60			
162109	R&M Engineering-Ketchikan	-		6,076.25	
162109003	R&M Engineering-Ketchikan			4,165.00	
16210900-4	R&M Engineering-Ketchikan			4,392.50	
839	Ray Matiashowski & Associates	4,000.00			
849	Ray Matiashowski & Associates	4,000.00			
S254KET03I	Samson Tug & Barge	106.00			
S259KET44N	Samson Tug & Barge	95.40			
S261KET29N	Samson Tug & Barge			158.20	
S260KET07I	Samson Tug & Barge	106.00			
S262KET32N	Samson Tug & Barge			95.40	
S264KET05I	Samson Tug & Barge	711.72			
S264KET06I	Samson Tug & Barge	1,876.20			
S266KET29N	Samson Tug & Barge			53.00	
S268WRA16N	Samson Tug & Barge		53.00		
411851	Satellite & Sound Inc	17,062.00			
912120206A	Scandia House Hotel	246.00			
912120315A	Scandia House Hotel	240.00			
912140303A	Scandia House Hotel	266.00			
912150202A	Scandia House Hotel	286.00			
912150302A	Scandia House Hotel	266.00			
919120216A	Scandia House Hotel	405.00			
K162610IN	Schmolck Mechanical Contractors Inc			198.11	
315806	SE Business Machines	2,030.00			
315807	SE Business Machines	428.00			
315805	SE Business Machines	620.00			
6363	SE Island Fuel	161.92			
16162	Segrity LLC		952.50		
16163	Segrity LLC		2,320.00		
16159	Segrity LLC	581.75			
16160	Segrity LLC		32,589.81		
16161	Segrity LLC		6,136.37		

# SOUTHEAST ALASKA POWER AGENCY - DISBURSEMENTS

## SEPTEMBER & OCTOBER 2016

Invoice No.	Company (Vendor)	Revenue Fund	R&R Fund	Construction	New Gen
16168	Segrity LLC		937.50		
16169	Segrity LLC		3,780.00		
16170	Segrity LLC	5,582.50			
436552	Sentry Hardware & Marine	15.98			
436554	Sentry Hardware & Marine	17.98			
436850	Sentry Hardware & Marine	48.68			
437811	Sentry Hardware & Marine	13.98			
242476	Service Auto Parts			33.32	
19177	Solar Electric Supply, Inc.	1,404.30			
577100	Southeast Auto & Marine Parts, Inc	70.50			
577785	Southeast Auto & Marine Parts, Inc	28.77			
578552	Southeast Auto & Marine Parts, Inc	98.81			
17659	Southeast Diesel & Electric	1,365.17			
21123	Stikine Auto Works	20.00			
21135	Stikine Auto Works	80.00			
3955	Stikine Inn	192.90			
3971	Stikine Inn	137.95			
3975	Stikine Inn		162.95		
3990	Stikine Inn		432.40		
3993	Stikine Inn		440.00		
52648	Sunrise Aviation Inc	6,870.00	870.00		
52665	Sunrise Aviation Inc	5,750.00	720.00		
5114891	Swagelok NW Fluid System Technologies			9,686.81	
DWNPMT17037	Swagelok NW Fluid System Technologies			20,986.34	
4024438	Swagelok NW Fluid System Technologies			15,784.82	
4024573	Swagelok NW Fluid System Technologies			7,471.16	
5115436	Swagelok NW Fluid System Technologies			1,916.79	
37364	Taquan Air	219.00		219.00	
37631	Taquan Air	-		876.00	
30424	Temsco Helicopter, Inc.	970.20			
30426	Temsco Helicopter, Inc.	1,724.80			
30428	Temsco Helicopter, Inc.	1,617.00			
30439	Temsco Helicopter, Inc.	4,585.75			
30553	Temsco Helicopter, Inc.		1,878.65		
30568	Temsco Helicopter, Inc.		1,863.30		
51089674	Tetra Tech Inc		2,382.80		
51089675	Tetra Tech Inc	7,541.57			
18886	TexRus	3,281.97			
19018	TexRus	2,391.00			
817	Tides Inn	1,140.00			
825120	Tongass Business Center	105.00			
826980	Tongass Business Center	29.20			
826981	Tongass Business Center	47.94			
C826981	Tongass Business Center	(13.80)			
833061	Tongass Business Center	41.30			
843290	Tongass Business Center	175.85			
843291	Tongass Business Center	26.92			
846980	Tongass Business Center	26.18			
38810	Tongass Substance Screening	3,600.00			
348638	Tongass Trading Company Inc	69.99			
355287	Tongass Trading Company Inc	47.97			
353794	Tongass Trading Company Inc	39.98			
6B146482C	Travelers	5,729.00			
38029	TSS, Incorporated	3,150.00			
N6578SUPP1	Twin Eagle Consulting, LLC		6,918.86		
T44072	Tyler Industrial Supply	-		10.94	

# SOUTHEAST ALASKA POWER AGENCY - DISBURSEMENTS

## SEPTEMBER & OCTOBER 2016

Invoice No.	Company (Vendor)	Revenue Fund	R&R Fund	Construction	New Gen
T45663	Tyler Industrial Supply	-		176.92	
T46086	Tyler Industrial Supply			25.90	
T46131	Tyler Industrial Supply			405.09	
T46599	Tyler Industrial Supply			710.65	
T50571	Tyler Industrial Supply			125.60	
T52521	Tyler Industrial Supply			41.67	
T52573	Tyler Industrial Supply			47.70	
K41189	Tyler Rental, Inc.	-		3,250.00	
K43356	Tyler Rental, Inc.	-		285.00	
T44606	Tyler Rental, Inc.	-		396.50	
1802406341	USDA Forest Service			13,234.86	
168370	Valley Nut & Bolt Co., Inc.			739.80	
129005	Van Ness Feldman PC	42.00			
129013	Van Ness Feldman PC	921.83			
129741	Van Ness Feldman PC	43.21			
129898	Van Ness Feldman PC	297.50			
1888	Ward Cove Industries LLC	-	1,125.00		
WF09I-201609	Wells Fargo 2009 Interest	27,750.52			
WF09I-201610	Wells Fargo 2009 Interest	27,750.52			
WF09P-201609	Wells Fargo 2009 Principal	64,166.67			
WF09P-201610	Wells Fargo 2009 Principal	64,166.67			
WF15I201609	Wells Fargo 2015 Interest	40,640.63			
WF15I-201610	Wells Fargo 2015 Interest	40,640.63			
65424436	Wells Fargo Vendor Fin Serv	23.33			
WAC17368	Wireless Applications Corp.	897.00			
WAC17494	Wireless Applications Corp.	147.00			
269	Woffinden, Jeimi	420.60			
274	Woffinden, Jeimi	408.00			
PH20160801	Wrangell City & Borough			6.00	
31012001	Wrangell City & Borough		1,438.80		
WRGHS2016	Wrangell High School	500.00			
62004	Wrangell Sentinel	54.63	71.88		
234064	Yanke Machine Shop	-		892.00	
38391	Yukon Fire Protection Services, Inc	3,915.46			
38392	Yukon Fire Protection Services, Inc	1,360.20			
38393	Yukon Fire Protection Services, Inc	3,454.46			
201609	Board Member Reimbursements	6.00			
201608	Employee Reimbursements	34.66			
201609	Employee Reimbursements	151.75		21.65	
201608	Bank of America VISA	16,758.66		1,350.89	
201609	Bank of America VISA	21,965.98	153.11	1,890.69	
<b>Total Disbursements</b>		<b>\$ 1,291,765</b>	<b>\$ 249,388</b>	<b>\$ 1,674,689</b>	<b>\$ 156</b>
			<b>\$3,215,998.14</b>		

\* Bank of America credit card charges include all travel, most telecom and some utility:  
 ACS, AT&T Mobility, AP&T, GCI, Globalstar, KPU, PSG Borough, Roadpost, Wrangell City & Boro  
 These recurring telecom & utility charges are approximately \$12,000/month.



## SOUTHEAST ALASKA POWER AGENCY CEO REPORT

---

DATE: October 26, 2016  
TO: SEAPA Board of Directors  
FROM: Trey Acteson, CEO  
SUBJECT: CEO Report

---

### **GOVERNMENTAL AFFAIRS:**

It's election time! That means politicians at the State and Federal levels are in full campaign mode and most energy legislation is on the back burner. Regardless of your political affiliation, please encourage your constituent base to review candidate positions on energy policy issues and consider how they may influence our ability to economically serve the future power needs of the region.

You don't have to look too far to see the negative impact of unchecked Federal overreach and ambiguous State policies. Issues such as the recent unprecedented 71% increase in FERC land use fees, restricted access for transmission line maintenance, unreasonable 4e and 10j mandatory license conditions, the Roadless Rule, and excessive permitting durations for transmission and hydro projects, all add to the cost of power shouldered by the ratepayers.

The Agency remains very active in addressing these and other important issues. We still have pending legislation in play at the Federal level and are leading efforts through the Alaska Power Association to establish statewide energy policy positions for the 2017 legislative session.

### **PUBLIC RELATIONS:**

SEAPA held a historic preservation meeting in Petersburg on September 13<sup>th</sup>. We were able to capture audio and video through a roundtable discussion with prominent people involved during the formative years of the Agency. This historical perspective will be preserved for future use and portions will be integrated into our website as time permits. We greatly appreciate the support provided by Petersburg Municipal Power & Light during this effort.

SEAPA hosted a meeting at our Ketchikan office on October 12<sup>th</sup> for the Open World Program Russian delegation sponsored by our local chapter of International Rotary. I provided a history of the Agency and detailed our role in the energy industry in Southeast Alaska. They were very interested in new development review process mechanisms and energy resource utilization in Alaska.

Our 3<sup>rd</sup> Quarter Community Flyer has been distributed to all three member communities and will be posted on our website. The flyer showcases the great progress being made on the Swan Lake Reservoir Expansion Project.

#### **BEST PRACTICES AND PROCESS IMPROVEMENTS:**

Staff has been working closely with our safety training contractor to finalize a new Health & Safety Plan for the Tyee Lake Hydro Facility.

Staff is also working on a comprehensive re-write of SEAPA's Employee Handbook. The existing document is very outdated and inadequate. The content of the Employee Handbook requires significant review as it must now address both represented and non-represented employees. It must also align with current State and Federal regulations. Our goal is to have it substantially completed by the end of the year and ready to present to the Board for consideration.

#### **PERSONNEL:**

We anticipate our Director of Special Projects position will be vacated in early 2017. The position title and description have been reviewed and are being adjusted to more accurately reflect representative duties. The objective is to attract, hire, and retain a highly experienced licensed engineer with a broad skillset. We anticipate this will be a very challenging position to fill.





## SOUTHEAST ALASKA POWER AGENCY

---

**Date:** October 25, 2016  
**To:** Trey Acteson, Chief Executive Officer  
**From:** Steve Henson, Operations Manager  
**Re:** Report for November 1-2, 2016 Board Meeting

### **MAJOR CONTRACTS and PROJECTS**

#### **ATV Use on the Tyee Transmission System**

Meridian has been selected for the permitting effort required by the USFS for the use of the ARGO on select areas of the Tyee transmission line right-of-way.

The final Environmental Assessment is being reviewed by the USFS.

#### **Dredging/Road Tyee Power Plant Harbor**

SEAPA has applied to the Army Corps of Engineers for assistance with design and implementation of a plan to alleviate the silting in the Tyee Power Plant harbor area. The application has been filed and is currently under review in Washington, D.C.



**Silting Impeding Access to Tyee harbor area.**

## **RR232-13 Satellite Communications System**

Installation of the satellite and phone system will be ongoing over the next few weeks utilizing SEAPA staff as much as possible. When staff has completed the wire and hardware installation, a contractor will be brought in to do the fiber work and start up.



**Tyee satellite platform has been installed by Alaska Clearing.**



**View from Burnett Peak Communications shack looking towards Wrangell.**

## **RR263-16 (CTs-Relay Wrangell Circuit Switcher)**

The next phase of the project is the engineering, procurement and installation of CT's on the spur line so that this section can be protected and sectionalized by relay action in the event of a line fault.

We have contracted with Electric Power Systems for the Engineering and Design phase of this project.

Construction drawings and specifications will be issued October 31, 2016. Installation will take place during maintenance shutdown in 2017.



**CS-T36 New Circuit Switch**

## **SPCC (Spill Prevention, Control & Countermeasure) Update**

ERM Environmental of Alaska has been selected to update the SPCC Plans for both the Tyee Lake and Swan Lake Projects.

## **Maintenance**

Staff has been working on the RFP for a three year contract to perform annual maintenance on the SEAPA transmission system. We are targeting the December Board meeting for recommendation and approval.

## **Tyee Lake Report**

- Alarm controls and protection work
- Turbine Shutoff Valve (TSV) controls refurbishment
- Marine terminal maintenance
- Conduit installation for fiber and power for the satellite system
- Brushing on Wrangell Island
- Winterization of USFS cabins at Tyee
- Road maintenance in preparation for winter

## **Swan Lake Report**

- New Hire, John Milner (Mechanic) began training with Rob Miller on Oct 12, 2016
- Yard lights / photo switch repairs completed on September 9, 2016
- Gazebo main water line valve repairs, in progress
- Fabrication of assembly jig for raiser kicker columns
- Assisted with transformer & line replacement for power to intake building

Staff will be available during the meeting to answer any questions or concerns.



**KETCHIKAN PUBLIC UTILITIES**  
**Swan Lake Project Report**  
Andy Donato, Electric Division Manager | Nov 2016

**SAFETY | ENVIRONMENTAL | SECURITY**

- New Hire, John Milner, Mechanic, started Oct 12, 2016 training under Rob Miller
- Lake Level reporting while instrumentation is out-of-service
- Log Boom remains out-of-service throughout construction
- Continuing evasive plant support lead by Botanist
  - Assisted Botanist in performing Substation sterilization and plant relocations
  - Plunge Pool access road vegetation clean-up

**OUTAGES | UNIT CONSTRAINTS | RESERVOIR LEVEL**

- SWG #1 trip 9-11-2016, 300G relay – reverse power
- SWG #1, 9-14-2016 caught in shut-down routine, reverse power
- Start-up excitation issue, resolve in progress
- Load Bank operation as required
- Reservoir level: 323.6 on October 25, 2016

**MAINTENANCE (REGULAR)**

- Yard lights/photo switch repairs 9-9-2016
- Ordered new Unit #2 bearing oil temp gauge (Tterice )
- Diesel #B fuel line repair/replacement.
- Excavator loss-of-power issue identified, scheduled
- Loader 544J coolant leak repaired
- Replaced Control Room Bathroom hot water tank
- Chlorine mixing pump replaced
- Gazebo main water line valve repairs, in progress
- Response and Lake boat bilge pump float switch repairs
- Procurement of replacement Diesel gen PLC battery chargers, in progress
- Procurement of replacement draft tube dewatering valve, in progress

**Project Support (Pool Rise Project)**

- Fabrication of assembly jig for raiser kicker columns
- Support of Plunge Pool clean-up, prep, measurement, and monitoring



- 
- Support of Board Member tours Sept 7, 2016
  - Assisted with transformer & line replacement for power to intake building.
  - Load Bank interconnection, operation, disconnection, de-mob

#### COMPLIANCE

- Scott air pack inspections and PM's, one additional on order
- Yukon Fire annual inspection 9-20-2016
  - Punch list items in progress
  - Extinguishers cycling to complete
  - Hydro test CO2 bottles
  - Halon sticker identification

#### Attachments/Images



Swan crew member Rob Miller with fabricated jig for “kicker” column assembly



## SOUTHEAST ALASKA POWER AGENCY

---

**Date:** October 25, 2016  
**To:** Trey Acteson, Chief Executive Officer  
**From:** Eric Wolfe, Director of Special Projects  
**Re:** Report for November 1-2, 2016 Board Meeting

### **Alarm-Controls-Protection (ACP)**

Final project work includes component inspections, termination drawing updates, system performance tests, training, and manuals. There has been a slight carry-over from FY16 into the FY17 budget to complete documentation and testing, with special attention to electrical drawing updates and manuals. Please see the board reports for April and June of this year for previous project updates and descriptions.

FY17 activities have been delayed by the construction at Swan Lake, but final performance testing is scheduled at Swan Lake during the week of October 24<sup>th</sup>. This testing will be done by James Volk of Segrity. Final testing of the Tyee ACP is scheduled for next spring, when electrical demand decreases. Site testing at Swan Lake will include the following work and has the following attributes:

- Identify any on-going problematic signal paths, such as hard to access faulty transducers and faulty electrical signals (intrinsic to legacy construction & miscellaneous wiring that occurred over the years).
- Verify that the correct level of protective action occurs for the signal value transmitted (SCADA Event, Plant Alarm-call-out, Trip).
- Verify the new control function 86R.
- Create a document that clearly identifies how the plant is protected; this document is to be used for operator training and for communication of alarming and protection to consultants and contractors.

### **Swan Lake Reservoir Expansion Project**

#### **Benefit and Cost:**

This project is a non-capacity license amendment with little-to-no environmental impact. It is also a revenue neutral (no rate increase) storage expansion project of which \$3.98M is grant funded. It will provide between 6,000 and 12,000 MWh of annual energy benefitting the entire system from a 25% increase of active storage. An annual average of 7,500 MWh of weather-independent, dispatchable energy will offset over ½ million gallons of diesel fuel annually.

Originally conceived as a dam raise during preliminary engineering investigations; by the completion of the 30% design process, FERC accepted a new design that utilized a combination of flashboards and a traditional vertical gate. This combination was the over-all best solution for cost, dam safety, and economic benefit.



Figure 1 - Swan Lake Spillway, May, 2015



Figure 2 - Swan Lake Spillway, October, 2016

As shown above in Figures 1 & 2, the scope of the project is deceptive. The flashboard system is the paneled wall (17 ft x 78 ft) which is to the left of the crane. The vertical gate is in the background (16 ½ ft x 23 ft) and to the right of the crane. A new concrete pier separates the two which are designed for the arc of the spillway.

**History:**

February 2012	SEAPA Board approves feasibility, engineering and license exploration studies
June 2012	Feasibility study and license review studies complete
Summer 2013	EIS consultation and studies conducted, study reports compiled
December 2014	EIS draft and final documents completed
March 2015	Application for license amendment submitted to FERC
June 2015	Project design contract awarded to McMillen (w/o license amendment)
August 2015	FERC issued our license amendment (delayed by APT intervention & FERC Legal)
November 2015	Flashboard design-fabricate contract signed with Kunz, design completed June 2016
January 2016	Vertical gate design-fabricate contract signed with Kunz
January 2016	Construction contract out for bid
May 3, 2016	PPM starts material procurement and mobilization without contract
May 5, 2016	Construction contract signed with PPM after the IMCO delay (loss of 5 weeks)
June 2016	Mobilization complete, site survey and preliminary construction initiated
October 2016	Civil construction complete, flashboards and vertical gate installed
November 2016	Equipment commissioning, civil, mechanical and electrical punch lists, demobilization
December 2016	Final project payments and close-out



**Construction:**

At our last meeting we reported on civil construction of the spillway components (center pier, abutment modifications, sill plate embedment) and SEAPA board members toured the site to gauge project scope and progress. We are happy to report that we are nearly complete: 95% civil work complete, 85% of mechanical work complete, and 70% of electrical work complete.



More detail regarding flashboard and vertical gate installation will be provided at the Board Meeting.

## Water Management Update

At our last Board meeting we wrote the following concluding paragraph regarding water management:

*Our goal is to keep Swan Lake near elevation 313 feet to facilitate crane operations. This water level also provides a buffer for inflows should we receive extremely wet weather and/or loose transmission capability. Construction activity would have to stop if water levels exceeded 327 feet. Later as spillway construction ends and we need additional water for both commissioning and winter generation, we look to add storage at Swan Lake during this period of low loads (late October to early November).*

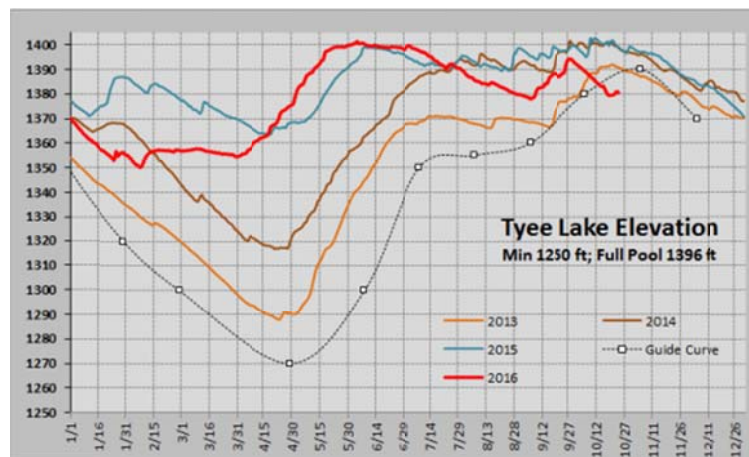
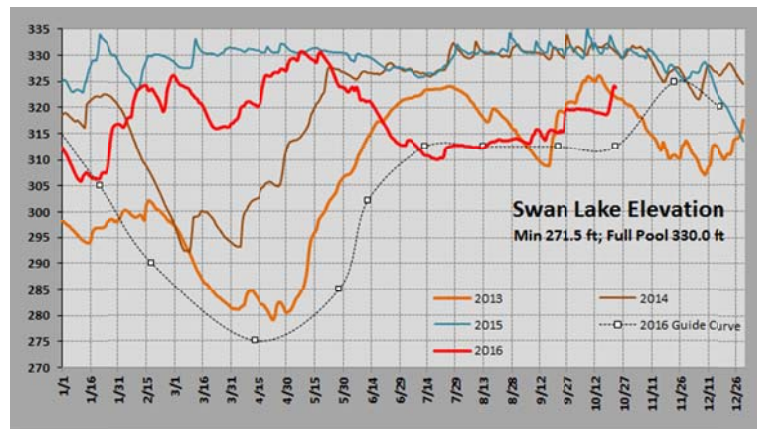
We were able to achieve that goal, even though Southeast Alaska has had an extremely dry October. During this dry period we operated Tye at unusually high levels and Swan Lake at unusually low levels. On a typical October day Tye generation averaged 19 MW while the Swan Lake average was 3.4 MW (Peak 22.2 MW and 8.8MW respectively).

A natural question would be, “Will the higher generation at Tye cause Tye to run out of water during the winter?” There are actually two answers to this question depending on the dedicated (WRG & PSG) or additional dedicated (KTN) perspective:

1.) Dedicated Perspective - There is ample water at Tye for PSG & WRG even if we experience a low inflow November, *and* PMPL Blind Slough has reduced output.

2.) Additional Dedicated Perspective - A dry November followed by a dry cold winter will reduce KPU electric hydro, increase loads and probably result in a period of diesel generation. On the other hand, a winter like the last two winters means there is little chance of diesel generation at Ketchikan. Next year we will have the advantage of additional storage that can be used to carry the loads through dry periods.

Additional modeling results and questions will be presented at the Board Meeting.





## SOUTHEAST ALASKA POWER AGENCY

---

**Date:** October 25, 2016  
**To:** Trey Acteson, CEO  
**From:** Ed Schofield, Power System Specialist  
**Subject:** Report for November 1-2, 2016 Board Meeting

### **Federal Energy Regulatory Commission (FERC)**

The FERC Swan Lake Reservoir Expansion Project monthly project report for September (report #4) has been completed and submitted. This report is a condition of the FERC License Amendment and is required to be submitted to FERC by the 15<sup>th</sup> of each month for the duration of the Project.

Updates to the Swan Lake Emergency Action Plan notification flow charts were distributed to all plan holders. This is an annual exercise to assure accurate contact information is available to all plan holders.

The final 2016 Rare and Invasive Plants Plan survey and transplant occurred on September 21<sup>st</sup>. Several Northern Bugleweed plants were located by the botanist along the Swan Lake shore. The plants were documented and transplanted to an area near the Swan Lake facility for the required three year monitoring period.

FERC engineer, Justin Nettles, was on site at Swan Lake for a scheduled monthly inspection of the Swan Lake Reservoir Expansion Project on September 15<sup>th</sup>. FERC had no comments or concerns to report.

### **Plunge Pool Access Security Gate**

A new security gate was constructed for the Swan Lake dam plunge pool area. This gate will enhance safety by restricting public access. This project is part of the Swan Lake Reservoir Expansion Project and was required by FERC. The plunge pool is located directly downstream of the dam spillway, and is design to dissipate dam spill energy and prevent dam foundation erosion. Access to the plunge pool will be limited to authorized personnel only, due to the automated fixed wheel gate functionality and flash board gate automated emergency trip design.





**Swan Lake Plunge Pool Access Security Gate 10-1-16**

### **Swan Lake Load Bank Decommissioning**

The 5 MW load bank was decommissioned and transported back to Crestchic (equipment rental) in Pennsylvania. The load bank was used to assist in lake elevation control throughout the Swan Lake Reservoir Expansion Project. Due to favorable weather conditions in October and the project completion schedule, there is no longer a need for the load bank to control the lake level. KPU lineman and Swan Lake crew facilitated the decommissioning tasks, which included electrical conductor and control circuit disconnects, as well as prepping the unit for barge transport.



**Crestchic 5 MW Load Bank at Swan Lake**

## **Swan Lake Reservoir Expansion Project History**

SEAPA contracted with KPU Telecommunications to video the monthly progress of the Swan Lake Reservoir Expansion Project. The goal of this effort is to develop a documentary that will preserve the historical progression of the construction of the Swan Lake Reservoir Expansion Project. Final onsite filming occurred on October 26<sup>th</sup>.



**KPU TV Filming At Swan Lake Dam Spillway**

## **Tyee Lake Outlet Weir / Abutment Void Filling - September 2016**

The purpose of the Tyee Lake outlet weir is to enable accurate measurement of lake spill as required by our FERC license.

The Tyee Lake outlet measurement weir is located in a steep narrow canyon. The bottom of the lake outlet is made up of boulders that have been dislodged from the vertical canyon walls and covered with several feet of rotten, woody debris. This debris has accumulated over many years. The spill measurement weir was constructed at a naturally occurring narrow and constrained waterway passage.

Following weir construction, leakage through voids in large boulders of the abutments was observed. A two-part expandable foam was used to fill the rock voids in an effort to force all spill over the measurement weir. This work can only happen when the lake levels are lower than 1,385 feet.

Phase 1, which occurred in March of 2016, filled the majority of the known larger voids. Approximately 25 yards of foam was used during this phase. During the second phase, in mid-September, 30 yards of foam was used to fill several smaller voids and two voids that were created by spring spill. BAM Construction was retained to perform this work.

Continued monitoring of the weir abutments spill will determine the effectiveness of these efforts to date and if additional efforts will be required.





**Tyee Lake Outlet Discharge Measurement Weir**



**Typical Abutment Rock Voids Filled with Two-Part Expandable Foam During Phase 2 - Elevation 1395 Feet**





**Voids and Fissures Along Downstream Sides of  
Right Abutment - Elevation 1378 Feet**



**Right Abutment Upstream with Expandable Foam Boxes Staged for  
Placement on Downstream Side - Top of Weir Elevation 1396 Feet**



**Expandable Foam Filling Voids of Right Abutment  
(Note Foam in Fissures) - Elevation 1380 Feet**

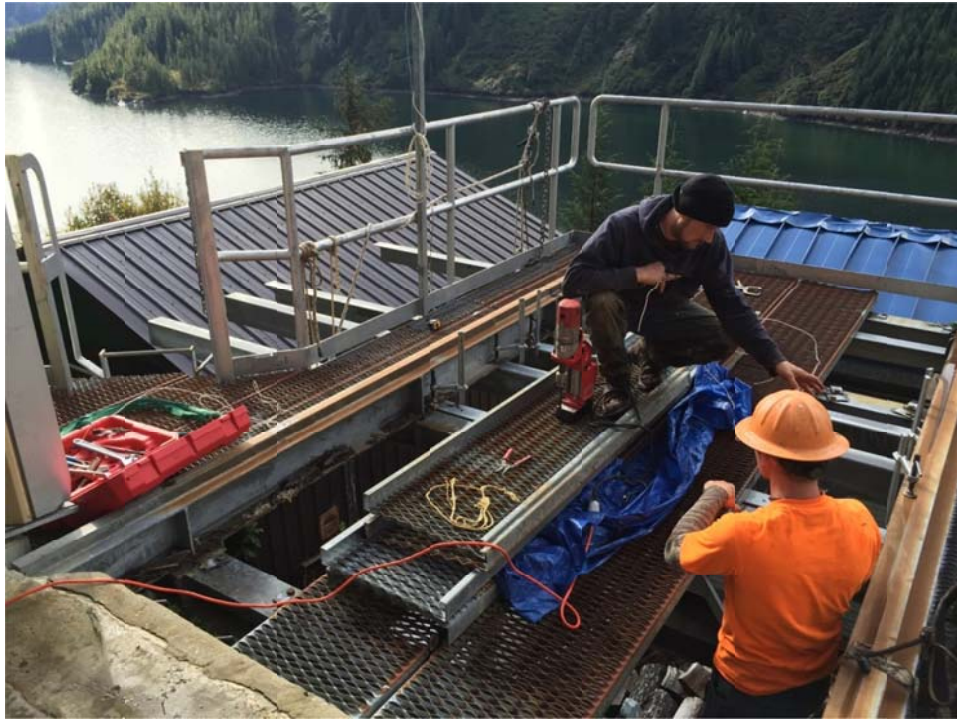
### **Tyee Satellite Mounting Bracket Installation / Tyee Lake Intake Gate Building**

A satellite dish will be installed at the Tyee Lake Intake Gate Building to transmit lake elevation information to Tyee Lake operations. The Tyee Lake Intake Gate Building is located 200 feet above the Tyee Lake north shore. To accommodate the installation of the satellite dish, a new mounting bracket was constructed by BAM Construction in mid-September.



**Installing Bracket to Tyee Lake Intake Gate Building**





**Layout and Drilling of Satellite Bracket for Attachment to Intake Gate Building Super Structure**



**Satellite Bracket Complete & Ready for Dish Installation**

## **Tyee Lake Emergency Shelter Foundation Installation**

In mid-September, BAM Construction disassembled a pre-existing helicopter pad and reassembled the pad in a location above lake floodwater elevation. The reassembled helicopter pad will be repurposed as the supporting foundation for a prefabricated fiberglass emergency shelter.



**Disassembly of the Existing Helicopter Pad and Preparation for Transport by Helicopter**



**Lifting Disassembled Helicopter Pad Sections to Emergency Shelter Location**





**Reassembly of Emergency Shelter Foundation**



**Emergency Shelter Foundation Complete**



## **Procurement of Owner Supplied Equipment for Swan Lake Reservoir Expansion Project**

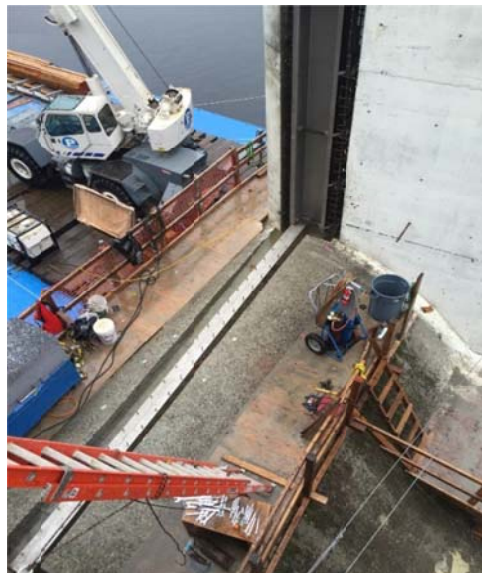
Specifications were developed and issued to reputable West Coast equipment dealers for the purchase of a trailer-mounted 70 KW portable generator and a 57 cfm rotary compressor. The stand-by generator is required for emergency operation of the new Fixed Wheel Gate. The rotary compressor will supply air to the new Ice Avoidance Bubbler System installed on the upstream face of dam spillway.

The generator was purchased from Tyler Rental in Juneau, AK. It is a previously used 2010 Multiquip DCA70 model, in excellent condition, with less than 3,000 hours. The rotary compressor was purchased from Portland Compressor in Portland, OR. It is an Ingersoll Rand model R11i 57 cfm stationary unit.

## **Swan Lake Reservoir Expansion Project Progressive Photos - September & October 2016**



**Flash Boards Columns Installed**



**Fixed Wheel Gate Sill Plate & Pier Guides Installed**



**First Section of Fixed Wheel Gate Installed**



**Column Kicker & Anchors Installation**





**First Stage Grounding of Column Kicker Anchors**



**Intake Building Bulkhead, Parapet Wall & Apron Slab Reinforcement Steel Installation**



**New Lake Debris Slab & Parapet Wall Installation**



**Installing Second Section of Fixed Wheel Gate**





**Installation of Intake Building Electrical & Hydraulic Corridor**



**Electrical & Hydraulic Installation to Dam Spillway**





**Flash Board Gate Installation**



**Intake Building Transformer Installation**



**A Not So Typical October Day at Swan Lake**



**Installation Complete for all Spillway Structural Components**



# SOUTHEAST ALASKA POWER AGENCY

## MEMO

---

Date: **October 26, 2016**

From: **Kay Key**

To: **Trey Acteson**

Subject: **Retirement Security Plan  
(Prepay Option)**

---

An option to issue a prepayment towards the NRECA defined benefit plan is available in calendar year 2016. This memo outlines the advantages of issuing this lump-sum payment that would reduce annual expenditures and incur long-term savings.

### SUGGESTED MOTION

I move to direct staff to issue a lump-sum prepayment to NRECA's Retirement Security Plan in the approximate amount of \$445,905 to apply towards SEAPA's defined contribution plan. I further move to direct staff to amortize the payment over ten years using the straight-line amortization method starting in FY2017.

A copy of SEAPA's Retirement Security Plan (RSP) billing rate history is attached. The System Costs have increased incrementally each year, except for a rate jump from 2009 to 2010 that was caused by a negative 26% asset return in 2008. SEAPA has the option of making a lump-sum prepayment of \$445,905 that would lower the 2016 contribution rate from 35.43% to 26.62%. The prepayment would also lower the 2017 contribution rate from 36.49% to 27.42% and future years' contribution rates accordingly, reducing overall expenditures significantly, as outlined in the following table.

The Savings Calculation Table on the next page was provided by NRECA and demonstrates the annual savings that would be earned from 2016 to 2028 based on the prepayment. 2028 is the year in which it is estimated that the higher annual contributions would accumulate to equal the total prepay amount. The savings is dependent upon assumptions regarding annual salary increases (2%) and the cost of capital. Example 1 includes a 3.85% cost of capital, the True Interest Cost of the 2015 Bonds. Example 2 shows a 0.06% cost of capital, reflecting SEAPA's current earnings rate on operating capital.

The lump-sum payment of \$445,905 is based upon a November 1 payment date, and the exact figure would be adjusted slightly dependent upon the actual payment date. This amount includes a credit for payments already made during this calendar year.

The payment would be recorded as a deferred debit and amortized over ten years using a straight-line method starting in FY17 (approximately \$37,000 a year). 2016 is the last year this prepay option is available.

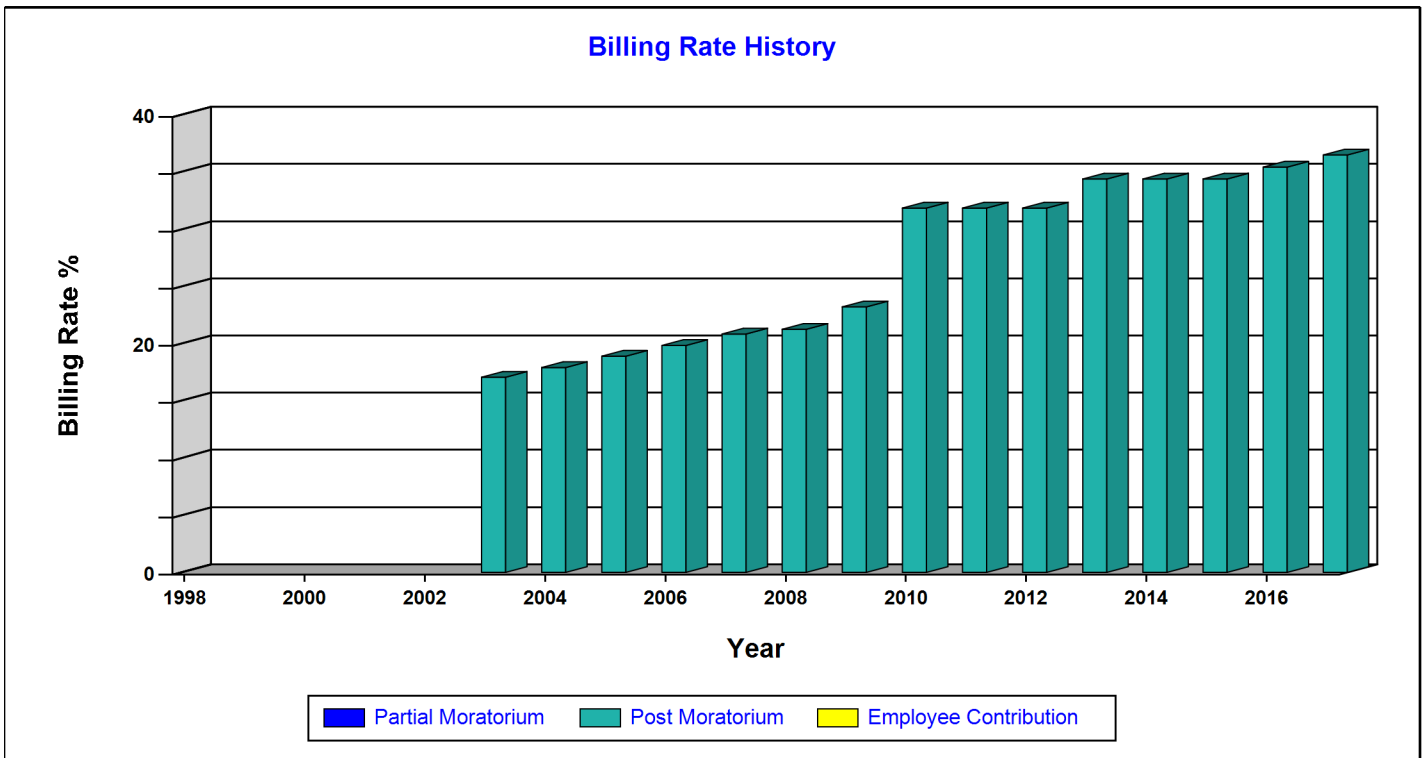


NATIONAL RURAL ELECTRIC COOPERATIVE ASSOCIATION

Retirement Security Plan

<b>System #:</b>	01-02192-001	<b>Plan ID:</b>	RNR01A
<b>Name:</b>	SOUTHEAST ALASKA PWR AGENCY		

Year	Benefit Level	System Cost	Employee Contribution	Plan	COLA	Average Age	100% Death Benefit	Salary Type
1998								
1999								
2000								
2001								
2002		<b>New</b>						
2003	2.00	17.06	0.00	62	Yes	51	No	BS
2004	2.00	17.91	0.00	62	Yes	52	No	BS
2005	2.00	18.90	0.00	62	Yes	63	No	BS
2006	2.00	19.84	0.00	62	Yes	51	No	BS
2007	2.00	20.84	0.00	62	Yes	56	No	BS
2008	2.00	21.25	0.00	62	Yes	51	No	BS
2009	2.00	23.21	0.00	62	Yes	49	No	BS
2010	2.00	31.85	0.00	62	Yes	50	No	BS
2011	2.00	31.85	0.00	62	Yes	50	No	BS
2012	2.00	31.85	0.00	62	Yes	57	No	BS
2013	2.00	34.39	0.00	62	Yes	56	No	BS
2014	2.00	34.39	0.00	62	Yes	55	No	BS
2015	2.00	34.39	0.00	62	Yes	56	No	BS
2016	2.00	35.43 <b>26.62</b>	0.00	62	Yes	56	No	BS
2017	2.00	36.49 <b>27.42</b>	0.00	62	Yes	56	No	BS



Note: The System Cost is the total of the Trust Contribution and the Administrative Fee.

Your Retirement Security Plan's salary type is "base salary." As a result, your contribution cost (system cost plus employee contribution rate shown above) is applied as a percentage of each participant's annualized base rate of pay in effect on November 15, 2016, which is that participant's effective salary for the 2017 plan year. Beginning with your January 2017 monthly statement, the estimated amount due will be based on this percentage. Rates shown are for the plan in effect as of January 1 for each year.

<b>SAVINGS CALCULATION TABLE</b>				
<b>*ASSUMPTIONS</b>			<b>Example 1</b>	<b>Example 2</b>
Annual increases in aggregate salary . .			<b>2.00%</b>	<b>2.00%</b>
Agency cost of capital . . . . .			<b>3.85%</b>	<b>0.06%</b>
(used in present value calculation below)				
<b>Year</b>	<b>Estimated Payroll</b>	<b>Annual Contribution Savings</b>	<b>Present Value of contribution savings 1/1/2016</b>	<b>Present Value of contribution savings 1/1/2016</b>
2016	834,019	73,477	73,477	73,477
2017	850,699	74,947	72,168	74,902
2018	867,713	76,446	70,883	76,354
2019	885,068	77,974	69,620	77,834
2020	902,769	79,534	68,380	79,343
2021	920,824	81,125	67,161	80,882
2022	939,241	82,747	65,965	82,450
2023	958,026	84,402	64,790	84,048
2024	977,186	86,090	63,636	85,678
2025	996,730	87,812	62,502	87,339
2026	1,016,665	89,568	61,389	89,033
2027	1,036,998	91,360	60,295	90,759
<b>Present Value of Lower Contributions</b>			800,265	982,099
<b>Prepay Contribution 1/1/2016 **</b>			<b>\$445,905</b>	<b>\$445,905</b>
<b>Estimated Savings</b>			<b>354,360</b>	<b>536,194</b>
<b>Billing Rates</b>			2016	2017
No prepay . . . . .			<b>35.43%</b>	<b>36.49%</b>
After Prepayment . . . . .			<b>26.62%</b>	<b>27.42%</b>

- \* The lower the Cost of Capital, the higher the savings.  
The lower the annual salary adjustment, the lower the savings.
- \*\* The Prepay Contribution includes a credit for payment already made during the calendar year.

**MEMORANDUM  
ATTORNEY-CLIENT COMMUNICATIONS**

TO: John Jensen, Chair  
Southeast Alaska Power Agency

FROM: Joel R. Paisner, Ascent Law Partners, LLP

DATE: October 25, 2016

RE: Suggested Motion for Executive Session Re: Annual Evaluation of SEAPA's  
Chief Executive Officer

---

To the extent that the Board of Directors seeks to conduct further discussions relating to an Annual Evaluation of SEAPA's Chief Executive Officer, I recommend the following motion be made:

I move to recess into Executive Session to conduct further discussions relating to an Annual Evaluation of SEAPA's Chief Executive Officer. The Executive Session will be conducted pursuant to SEAPA's Bylaws which are consistent with Alaska Statute 44.62.310 as the discussions may include subjects that tend to prejudice the reputation and character of any person.





## SEAPA 2016 BOARD MEETING DATES

Date(s)	Location	Comments
December 14 (Wed)	Ktn	9am – 5pm

<u>2016</u>																														
January							February							March							April									
S	M	T	W	Th	F	S	S	M	T	W	Th	F	S	S	M	T	W	Th	F	S	S	M	T	W	Th	F	S			
					1	2	1	2	3	4	5	6			1	2	3	4	5							1	2			
3	4	5	6	7	8	9	7	8	9	10	11	12	13	6	7	8	9	10	11	12	3	4	5	6	7	8	9			
10	11	12	13	14	15	16	14	15	16	17	18	19	20	13	14	15	16	17	18	19	10	11	12	13	14	15	16			
17	18	19	20	21	22	23	21	22	23	24	25	26	27	20	21	22	23	24	25	26	17	18	19	20	21	22	23			
24	25	26	27	28	29	30	28	29	27	28	29	30	31	24	25	26	27	28	29	30										
31																														
May							June							July							August									
S	M	T	W	Th	F	S	S	M	T	W	Th	F	S	S	M	T	W	Th	F	S	S	M	T	W	Th	F	S			
1	2	3	4	5	6	7			1	2	3	4						1	2	1	2	3	4	5	6					
8	9	10	11	12	13	14	5	6	7	8	9	10	11	3	4	5	6	7	8	9	7	8	9	10	11	12	13			
15	16	17	18	19	20	21	12	13	14	15	16	17	18	10	11	12	13	14	15	16	14	15	16	17	18	19	20			
22	23	24	25	26	27	28	19	20	21	22	23	24	25	17	18	19	20	21	22	23	21	22	23	24	25	26	27			
29	30	31	26	27	28	29	30	24	25	26	27	28	29	30	28	29	30	31												
														31																
September							October							November							December									
S	M	T	W	Th	F	S	S	M	T	W	Th	F	S	S	M	T	W	Th	F	S	S	M	T	W	Th	F	S			
			1	2	3							1		1	2	3	4	5						1	2	3				
4	5	6	7	8	9	10	2	3	4	5	6	7	8	6	7	8	9	10	11	12	4	5	6	7	8	9	10			
11	12	13	14	15	16	17	9	10	11	12	13	14	15	13	14	15	16	17	18	19	11	12	13	14	15	16	17			
18	19	20	21	22	23	24	16	17	18	19	20	21	22	20	21	22	23	24	25	26	18	19	20	21	22	23	24			
25	26	27	28	29	30	23	24	25	26	27	28	29	27	28	29	30	25	26	27	28	29	30	31							
							30	31																						