



## SOUTHEAST ALASKA POWER AGENCY

### Special Board Meeting AGENDA

SEAPA Offices | Ketchikan, Alaska

April 17, 2018 | 2:00 p.m. AKDT

**For Telephonic Participation: Dial 1-800-315-6338 (Access Code: 73272#)**

1. Call to Order
  - A. Roll call
2. Approval of the Agenda
3. Financial Reports
  - A. Financial Statements, including R&R Reports – February and January 2018
  - B. Disbursements Acceptance– February and March 2018
4. New Business
  - A. Consideration and Approval of Swan Lake Marine Bulkhead Restoration Project
  - B. Consideration and Approval of Tye Lake ROV Inspection and Analysis of the Tye Submarine Cables Project
  - C. Consideration and Approval of Swan Lake Generating Station Unit #1 and Unit #2 Turbine Runner Cavitation Project
  - D. Consideration and Approval of Tye Power Tunnel ROV Project
5. Next Meeting Date: June 19-20<sup>th</sup>, 2018, Wrangell, Alaska
6. Adjourn



## SOUTHEAST ALASKA POWER AGENCY CONTROLLER MEMO

---

Date: March 28, 2018

From: Kay Key

To: Trey Acteson

Subject: **FINANCIAL STATEMENTS**

---

### SUGGESTED MOTION

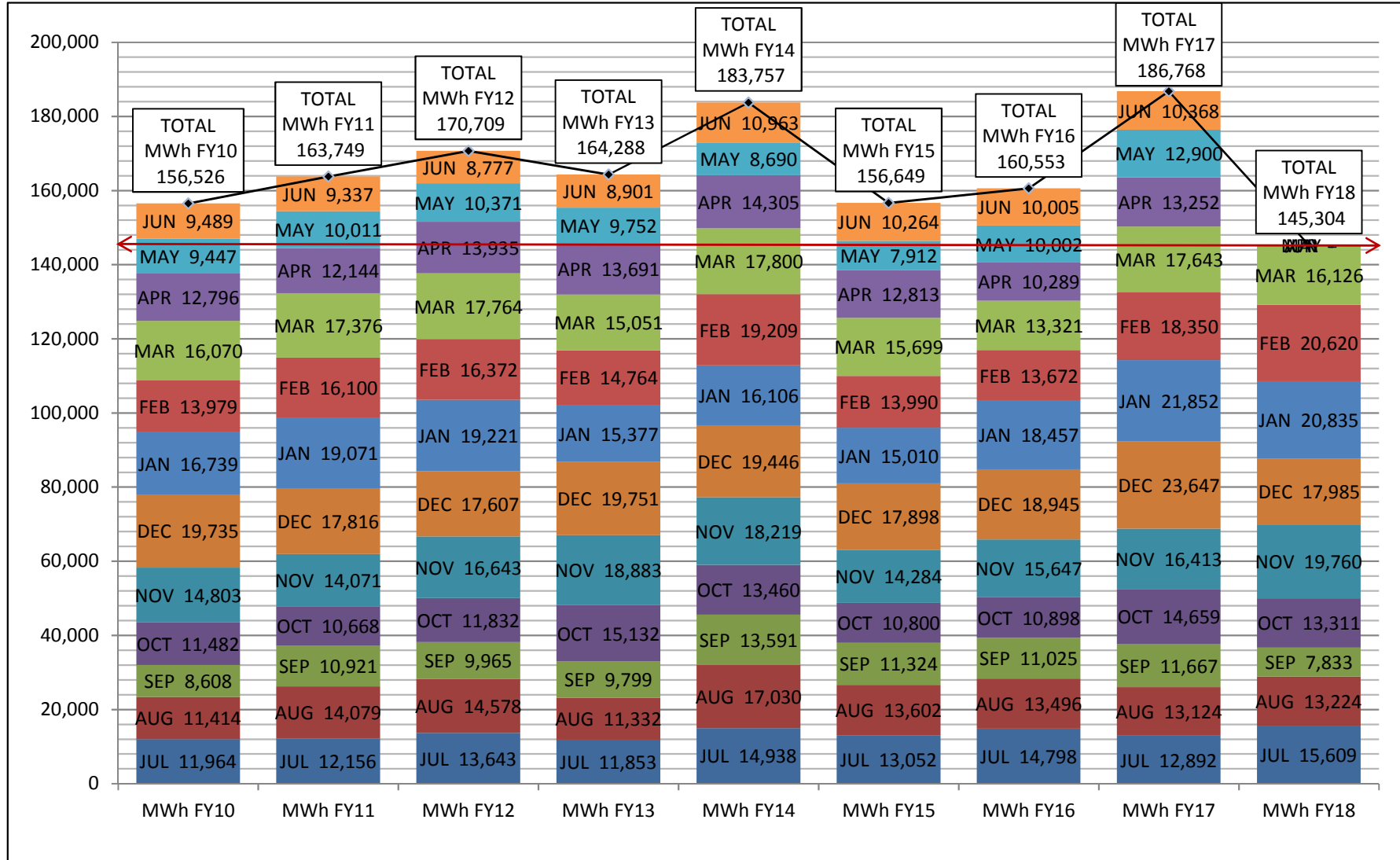
I move to accept the financial statements for the months of February and January 2018, as presented.

The following financial reports are included in this board packet:

- **kWh Graphs**
  - ✓ MWH Year-Over-Year
  - ✓ Power Sales by Month (3 years)
  
- **Monthly Financial Statements for February and January 2018:**
  - ✓ Financial Overview
  - ✓ Fund Allocation Graph
  - ✓ Statement of Financial Position – Summary Prior Year Comparison
  - ✓ Statement of Activities – Summary Prior Year Comparison
  - ✓ Statement of Financial Position – Detail
  - ✓ Statement of Activities – Budget Comparison Detail
  
- **R&R Reports**
  - ✓ Summary
  - ✓ Detail of Expenditures

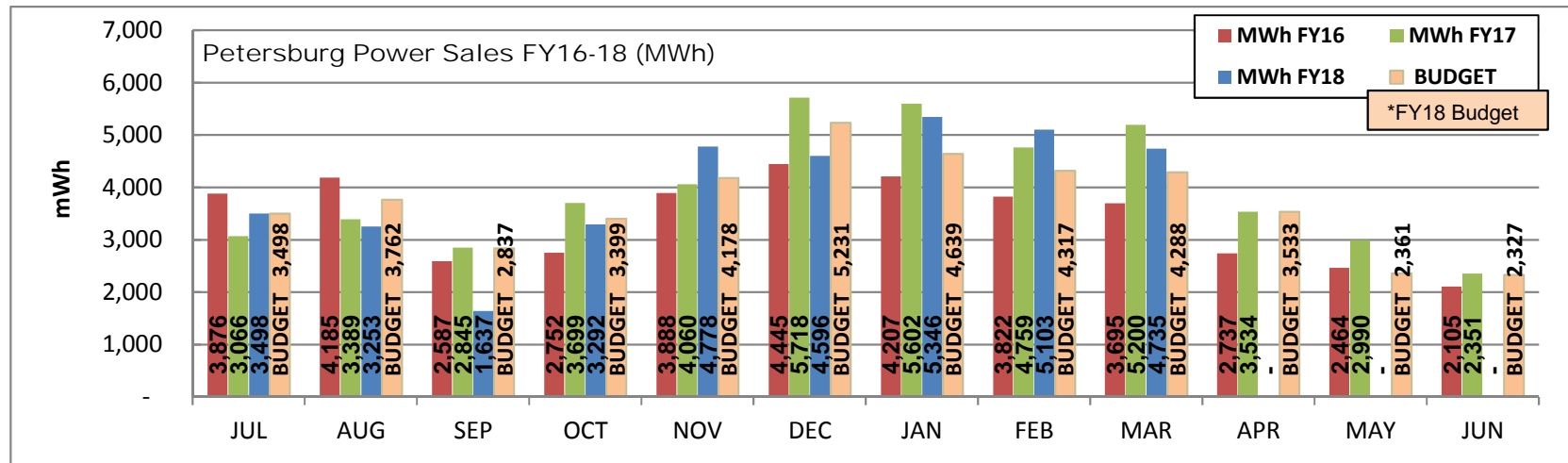
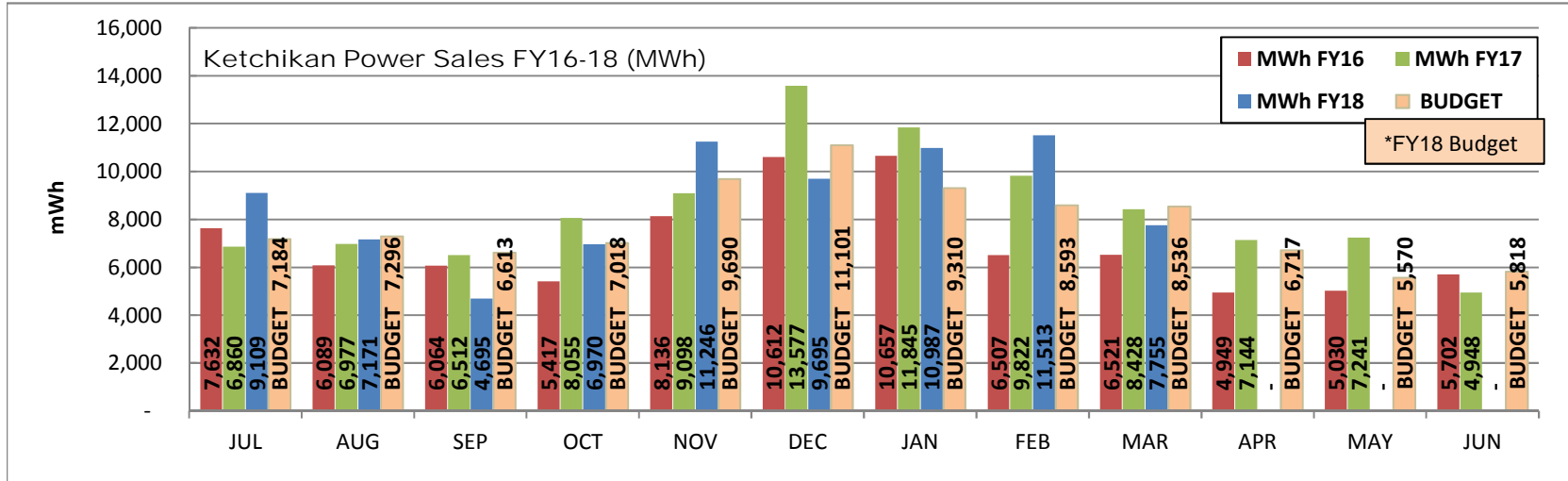
No grant summary is included as it is updated quarterly and there has been no change since the December summary was reported at the last board meeting.

# MWh Sales Year-to-Year Comparison



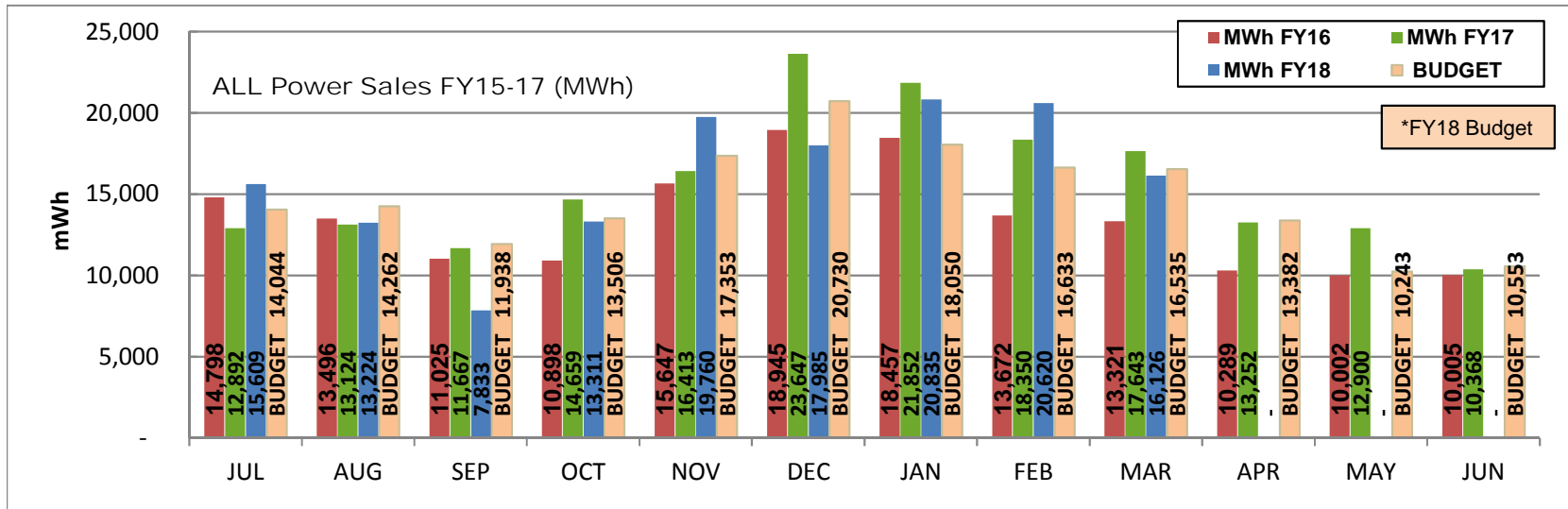
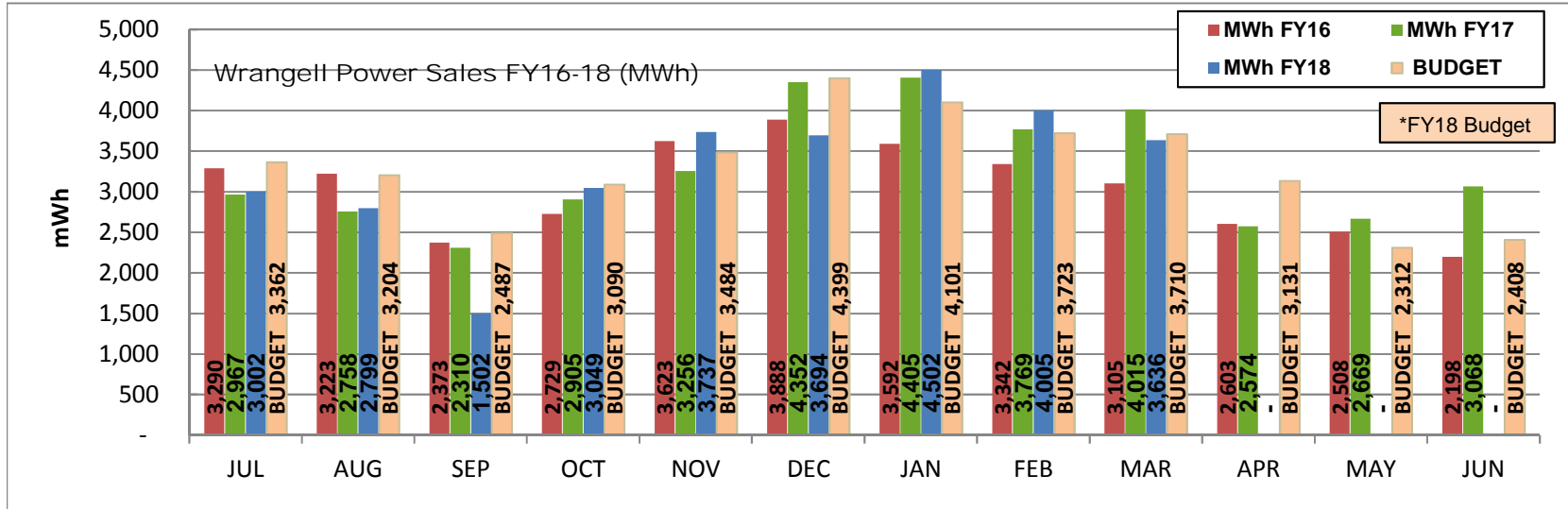
**SOUTHEAST ALASKA POWER AGENCY  
FIRM POWER SALES (kWh / MWh)**

MAR 2018	FY18 kWh HYDROPOWER SALES	CURRENT MONTH		YEAR-TO-DATE	
		Actual	Budget	Actual	Budget
	Ketchikan Power Purchases	7,755,072	8,536,486	79,140,352	75,340,992
Petersburg Power Purchases	4,735,475	4,288,110	36,237,991	36,148,042	
Wrangell Power Purchases	3,635,650	3,710,286	29,925,950	31,560,862	
<b>Total Power Purchases</b>	<b>16,126,197</b>	<b>16,534,882</b>	<b>145,304,293</b>	<b>143,049,896</b>	



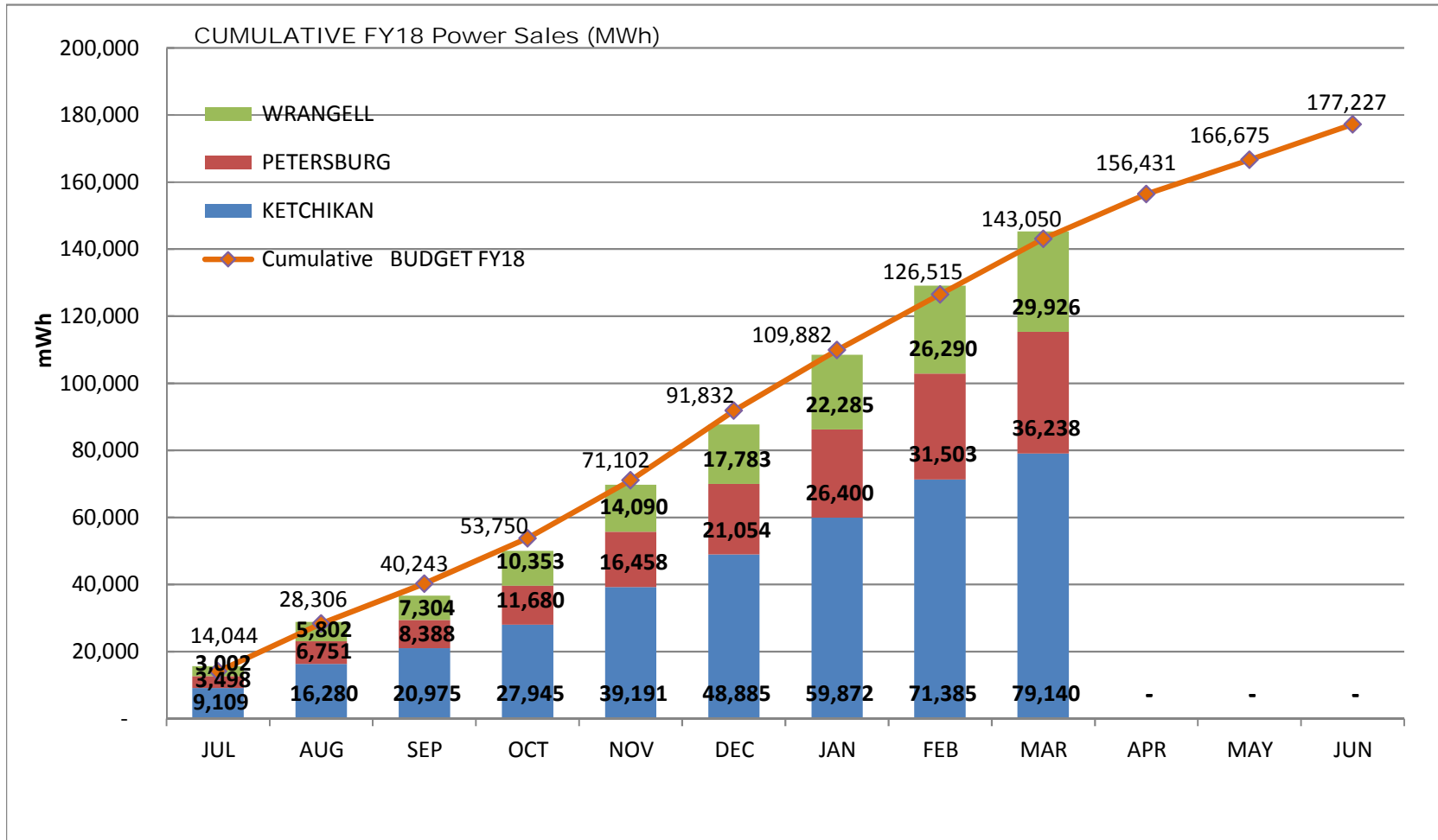
**SOUTHEAST ALASKA POWER AGENCY  
FIRM POWER SALES (kWh / MWh)**

MAR 2018	FY18 kWh HYDROPOWER SALES	CURRENT MONTH		YEAR-TO-DATE	
		Actual	Budget	Actual	Budget
		Ketchikan Power Purchases	7,755,072	8,536,486	79,140,352
Petersburg Power Purchases	4,735,475	4,288,110	36,237,991	36,148,042	
Wrangell Power Purchases	3,635,650	3,710,286	29,925,950	31,560,862	
<b>Total Power Purchases</b>	<b>16,126,197</b>	<b>16,534,882</b>	<b>145,304,293</b>	<b>143,049,896</b>	



**SOUTHEAST ALASKA POWER AGENCY  
FIRM POWER SALES (kWh / MWh)**

MAR 2018	FY18 kWh HYDROPOWER SALES	CURRENT MONTH		YEAR-TO-DATE	
		Actual	Budget	Actual	Budget
	Ketchikan Power Purchases	7,755,072	8,536,486	79,140,352	75,340,992
Petersburg Power Purchases	4,735,475	4,288,110	36,237,991	36,148,042	
Wrangell Power Purchases	3,635,650	3,710,286	29,925,950	31,560,862	
<b>Total Power Purchases</b>	<b>16,126,197</b>	<b>16,534,882</b>	<b>145,304,293</b>	<b>143,049,896</b>	





## FEBRUARY 2018 FINANCIAL OVERVIEW

The following tables provide a snapshot of SEAPA's revenues and expenses for FEBRUARY, 2018.

Revenues from kWh sales were over budget for the month:

FIRM kWh SALES	FEBRUARY Sales	FEBRUARY Budget	Prior Year Sales
Ketchikan	\$782,875	\$584,335	\$667,886
Petersburg	\$346,974	\$293,534	\$323,620
Wrangell	\$272,341	\$253,151	\$256,288
<b>Total Revenue</b>	<b>\$1,402,189</b>	<b>\$1,131,020</b>	<b>\$1,247,794</b>

Fiscal year-to-date revenues from kWh sales were also over budget:

FIRM kWh SALES	YTD Sales	YTD Budget	Prior YTD Sales
Ketchikan	\$4,854,199	\$4,542,706	\$4,946,659
Petersburg	\$2,142,171	\$2,166,475	\$2,253,452
Wrangell	\$1,787,740	\$1,893,839	\$1,816,998
<b>Total Revenue</b>	<b>\$8,784,111</b>	<b>\$8,603,020</b>	<b>\$9,017,110</b>

FIRM kWh SALES (Year-Over-Year)	FISCAL YEAR	FEBRUARY kWh	YTD JUL-FEB kWh
	FY2018	20,620,429	129,178,096
	FY2017	18,349,908	132,604,559
	FY2016	13,671,510	116,937,467

Administrative and operating expenses were under budget:

Administrative & Operating Expenses	FEBRUARY Actual	FEBRUARY Budget	Prior Yr Expense
	\$411,961	\$471,474	\$336,675
	YTD Actual	YTD Budget	Prior YTD Expense
	\$3,914,855	\$4,507,280	\$3,417,642

A U.S. Bureau of Reclamation expense in the amount of \$47,850 was recorded this month for the budgeted Swan Lake Facility Review.

FERC Land Use invoices recorded expense for the FERC Bill Year 2017 (Oct 2016-Sep 2017). Billing was delayed while FERC reevaluated their method for assigning land use rates for the state of Alaska. The rate was lowered from \$56.78/acre in FERC Bill Year 2016 to \$36.53/acre for FERC Bill Year 2017; Swan Lake \$11,737 and Tye Lake \$42,886 compared to prior years of \$18,243 and \$66,682, respectively.

This led to reductions in FERC Land Use expense (540300, 540400) and Other Current Liabilities (210150). The portion of the bill that took place in FY17 (Oct 2016-Jun 2017) was recorded as a credit to Misc. Nonoperating Expense (950001).

Operations, Capital and Insurance Funds

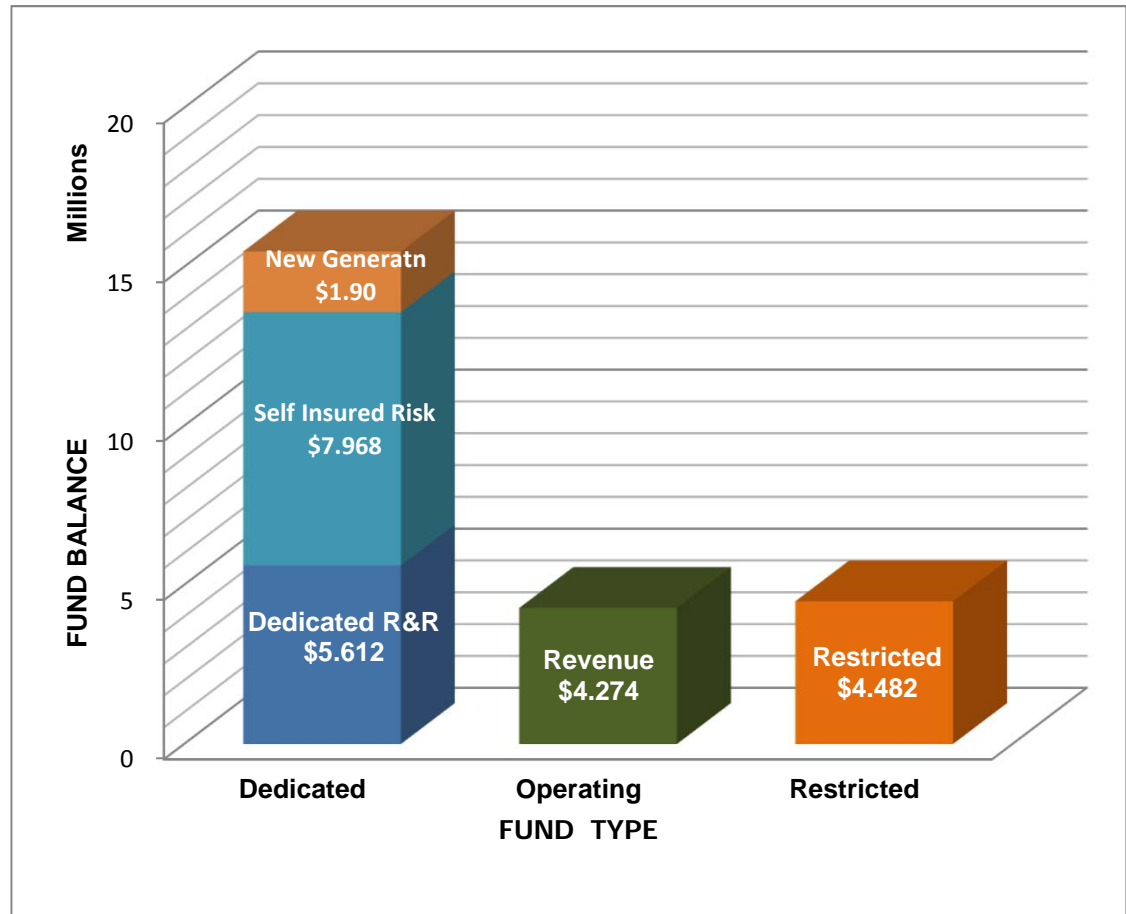
Revenue Fund FB	\$ 4,272,830
Required R&R Fund FB	1,000,406
Dedicated R&R Projects Fund FB	5,611,877
Commercial FB	1,000
New Generation Fund	1,898,829
Self Insured Risk Fund FNBA	<u>7,967,731</u>
<b>Total Operations, Capital and Insurance Funds</b>	<b>20,752,673</b>

Trustee Funds

2009 Bond Interest	\$ 101,136
2009 Bond Principal	601,770
2009 Bond Reserve	1,417,351
2015 Bond Interest	122,079
2015 Bond Reserve	<u>213,891</u>
<b>Total Trustee Funds</b>	<b>2,456,228</b>

Other Restricted Funds

STI - USFS CD WF	\$ 21,626
DNR Reclamation Fund WF	<u>1,003,273</u>
<b>Total Other Restricted Funds</b>	<b>1,024,899</b>
<b>Total Agency Funds</b>	<b><u>\$ 24,233,799</u></b>



Dedicated Funds

- New Generation = Project feasibility funding (hydro, wind, geothermal)
- Self-Insured Risk = Coverage for uninsured transmission lines, submarine cables and insurance deductibles.
- Dedicated R&R = Funds Replacement & Repair projects approved by the SEAPA Board in the budget.

Operating Funds

Revenue Fund & Commercial Checking: All SEAPA income is deposited to the Revenue Fund as required by Bond Indentures.

Restricted Funds (Legally or contractually restricted)

- Bonds = All Trustee Funds: Bond Interest, Principal, Reserve and Escrow accounts
- R&R = \$1,000,000 minimum balance required by bond indenture
- DNR = Alaska DNR Reclamation Agreement
- USFS = USFS Land Remediation Certificate of Deposit



**SOUTHEAST ALASKA POWER AGENCY**  
**Financial Position - Prior Year Comparison**  
**as of February 28, 2018**

	FEB 28, 2018	FEB 28, 2017
<b>ASSETS</b>		
<b>Current Assets</b>		
<b>Agency Funds</b>		
111000 · Ops/Capital/Insurance Funds	20,752,673	21,445,105
112000 · Trustee Funds	2,456,228	2,497,970
113000 · Other Restricted Funds	1,024,899	948,892
<b>Total Agency Funds</b>	24,233,799	24,891,967
<b>Accounts Receivable</b>		
110000 · Accounts Receivable	2,646,858	2,846,394
<b>Total Accounts Receivable</b>	2,646,858	2,846,394
<b>Other Current Assets</b>		
120200 · Other Receivables	5,800	4,606
120300 · Accrued Interest Receivable	18,397	17,037
120500 · Prepaid Fees	424,634	366,160
120700 · Inventory Assets	1,042,239	1,116,928
<b>Total Other Current Assets</b>	1,491,070	1,504,731
<b>Total Current Assets</b>	28,371,727	29,243,092
<b>Fixed Assets</b>		
130100 · Capital Assets	177,662,993	162,592,221
132200 · R&R Projects WIP Capital Improv	566,030	12,809,771
132900 · Accumulated Depreciation	(43,480,174)	(38,749,502)
<b>Total Fixed Assets</b>	134,748,848	136,652,490
<b>Other Assets</b>		
183000 · Deferred Assets	116,733	382,988
<b>Total Other Assets</b>	116,733	382,988
<b>TOTAL ASSETS</b>	<b>163,237,308</b>	<b>166,278,570</b>
<b>LIABILITIES &amp; EQUITY</b>		
<b>Liabilities</b>		
<b>Current Liabilities</b>		
<b>Accounts Payable</b>		
210100 · Accounts Payable General	79,470	1,640,741
<b>Total Accounts Payable</b>	79,470	1,640,741
<b>Other Current Liabilities</b>		
210150 · Other Current Liabilities	47,188	64,583
210152 · DNR Fund - CVEA KEA Portion	337,500	300,000
210300 · Reserve Interest Payable	227,372	205,150
210400 · Wages Payable	58,520	49,769
210401 · PTO Payable	175,354	163,664
210500 · Payroll Liabilities	31,278	24,977
<b>Total Other Current Liabilities</b>	877,212	808,144
<b>Total Current Liabilities</b>	956,682	2,448,884
<b>Long Term Liabilities</b>		
220100 · Series B Bonds 2009	6,390,000	7,160,000
220120 · 2009 Bond Issuance Discount	(25,143)	(29,166)
220121 · PERS Unfunded Liability WRG	1,005,501	1,005,501
220130 · Series 2015 Bonds	10,295,000	10,295,000
220131 · 2015 Bond Issuance Premium	839,639	894,697
<b>Total Long Term Liabilities</b>	18,504,997	19,326,032
<b>Total Liabilities</b>	19,461,679	21,774,916
<b>Equity</b>		
310000 · Net Position	142,591,882	142,657,410
Net Income	1,183,747	3,173,312
<b>Total Equity</b>	143,775,629	145,830,722
<b>TOTAL LIABILITIES &amp; EQUITY</b>	<b>163,237,308</b>	<b>167,605,638</b>

**SOUTHEAST ALASKA POWER AGENCY**  
**Statement of Activities - Prior Year Comparison**  
**February 2018**

	FEB 2018	FEB 2017
<b>Operating Income/Expense</b>		
<b>Operating Income</b>		
410000 · Hydro Facility Revenues	1,402,189	1,247,794
<b>Total Operating Income</b>	1,402,189	1,247,794
<b>Operating Expense</b>		
535000 · Hydro Ops-Suprvsn & Engineering	53,686	7,812
538000 · Electric Expenses	766	1,047
539000 · Misc Power Generation Expense	24,556	23,344
540000 · Rents	(6,236)	15,600
541000 · Hydro Power Station Maintenance	338	1,455
544000 · Maintenance of Electric Plant	100,527	92,433
545000 · Plant Miscellaneous Maintenance	1,507	749
561000 · Control System Maintenance	4,184	1,431
562000 · Trans/Operations Station Exp	2,711	4,532
564000 · Trans/Submarine Cable Expense	-	687
571000 · Trans/Maint Overhead Lines(OHL)	20,988	11,986
920000 · Admin Wages & Benefits	127,480	101,679
921000 · Office Expenses	6,508	5,471
922000 · Legislative Affairs	-	4,000
923000 · Contract Services	16,024	6,761
924000 · Insurance	37,410	38,279
928000 · Regulatory Commission Expense	4,838	5,583
930000 · General Expenses	8,283	6,839
931000 · Admin Rent	8,392	6,984
<b>Total Operating Expense</b>	411,961	336,675
<b>Net Operating Income</b>	990,228	911,118
<b>Nonoperating Income/Expense</b>		
<b>Nonoperating Income</b>		
942000 · Interest Income	10,976	6,788
944000 · Realized Gain/Loss	(4,916)	-
945000 · Unrealized Gain/Loss	(10,713)	3,771
946000 · Misc Nonoperating Income	1,500	-
<b>Total Nonoperating Income</b>	(3,153)	10,559
<b>Nonoperating Expense</b>		
950001 · Misc Nonoperating Expense	(25,144)	-
952000 · Bond Interest 2009 Series	27,069	29,642
952001 · Bond Interest 2015 Series	36,052	36,052
953000 · Depreciation Expense	398,265	360,246
954000 · Grant Expenses	-	279
<b>Total Nonoperating Expense</b>	436,242	426,220
<b>Net Nonoperating Income</b>	(439,396)	(415,661)
<b>Net Change in Financial Position</b>	<b>550,832</b>	<b>495,458</b>

**SOUTHEAST ALASKA POWER AGENCY**  
**Statement of Financial Position - Detail**  
**as of February 28, 2018**

**ASSETS**

<b>Current Assets</b>	
<b>Agency Funds</b>	
<b>111000 · Ops/Capital/Insurance Funds</b>	
111100 · Revenue Fund FB	4,272,830
111200 · Required R&R Fund FB	1,000,406
111210 · Dedicated R&R Projects Fund FB	5,611,877
111300 · Commercial FB	1,000
111401 · New Generation Fund	1,898,829
111500 · Self Insured Risk Fund FNBA	7,967,731
<b>Total 111000 · Ops/Capital/Insurance Funds</b>	<b>20,752,673</b>
<b>112000 · Trustee Funds</b>	
112100 · WF Trust 2009 Bond Interest	101,136
112200 · WF Trust 2009 Bond Principal	601,770
112300 · WF Trust 2009 Bond Reserve	1,417,351
112501 · WF Trust 2015 Bond Interest	122,079
112503 · WF Trust 2015 Bond Reserve	213,891
<b>Total 112000 · Trustee Funds</b>	<b>2,456,228</b>
<b>113000 · Other Restricted Funds</b>	
113100 · STI - USFS CD WF	21,626
113500 · DNR Reclamation Fund WF	1,003,273
<b>Total 113000 · Other Restricted Funds</b>	<b>1,024,899</b>
<b>Total Agency Funds</b>	<b>24,233,799</b>
<b>Accounts Receivable</b>	
110000 · Accounts Receivable	2,646,858
<b>Total Accounts Receivable</b>	<b>2,646,858</b>
<b>Other Current Assets</b>	
120200 · Other Receivables	5,800
120300 · Accrued Interest Receivable	18,397
120500 · Prepaid Fees	
120520 · Prepaid Insurance	301,038
120530 · Prepaid Operating Expense	17,967
120540 · Prepaid USDA FS Land Use Fees	84,407
120550 · Prepaid Admin Benefits	21,221
<b>Total 120500 · Prepaid Fees</b>	<b>424,634</b>
<b>120700 · Inventory Assets</b>	
1207001 · Inventory - Spares-Stores	151,834
1207003 · Inventory - SWL Winding Replace	890,405
<b>Total 120700 · Inventory Assets</b>	<b>1,042,239</b>
<b>Total 120000 - Other Current Assets</b>	<b>1,491,070</b>
<b>Total Current Assets</b>	<b>28,371,727</b>
<b>Fixed Assets</b>	
<b>130100 · Capital Assets</b>	
130110 · Swan Lake	30,632,174
130120 · Tyee Lake	31,425,703
130130 · SEAPA Office	809,677
132100 · Swan Tyee Intertie in Operation	114,795,439
<b>Total 130100 · Capital Assets</b>	<b>177,662,993</b>
<b>132200 · R&amp;R Projects WIP Capital Improv</b>	
132210 · R&R Projects - WIP Swan Lake	229,579
132220 · R&R Projects - WIP Tyee Lake	331,519
132240 · R&R Projects - WIP SEAPA Office	4,932
<b>Total 132200 · R&amp;R Projects WIP Capital Improv</b>	<b>566,030</b>
<b>132900 · Accumulated Depreciation</b>	<b>(43,480,174)</b>
<b>Total 130000 - Fixed Assets</b>	<b>134,748,848</b>
<b>Other Assets</b>	
183000 · Deferred Assets	
183003 · 2009 Bond - Refunded Discount	116,733
<b>Total 183000 · Deferred Assets</b>	<b>116,733</b>
<b>TOTAL ASSETS</b>	<b>163,237,308</b>

**SOUTHEAST ALASKA POWER AGENCY**  
**Statement of Financial Position - Detail**  
**as of February 28, 2018**

<b>LIABILITIES &amp; EQUITY</b>	
<b>Liabilities</b>	
<b>Current Liabilities</b>	
<b>Accounts Payable</b>	
210100 · Accounts Payable General	79,470
<b>Total Accounts Payable</b>	<b>79,470</b>
<b>Other Current Liabilities</b>	
210150 · Other Current Liabilities	47,188
210152 · DNR Fund - CVEA KEA Portion	337,500
210300 · Reserve Interest Payable	227,372
210400 · Wages Payable	58,520
210401 · PTO Payable	175,354
210500 · Payroll Liabilities	
210521 · FICA Payable	4,601
210522 · SUI Tax Payable	4,083
210531 · IBEW H&W Payable	12,966
210540 · 457(b) Payable	1,023
210541 · IBEW Pension Payable	7,755
210550 · IBEW Dues Payable	851
Total 210500 · Payroll Liabilities	31,278
<b>Total Other Current Liabilities</b>	<b>877,212</b>
<b>Total Current Liabilities</b>	<b>956,682</b>
<b>Long Term Liabilities</b>	
220100 · Series B Bonds 2009	6,390,000
220120 · 2009 Bond Issuance Discount	(25,143)
220121 · PERS Unfunded Liability WRG	1,005,501
220130 · Series 2015 Bonds	10,295,000
220131 · 2015 Bond Issuance Premium	839,639
<b>Total Long Term Liabilities</b>	<b>18,504,997</b>
<b>Total Liabilities</b>	<b>19,461,679</b>
<b>Net Position</b>	
310000 · Net Position	
3100001 · Net Investment Capital Assets	119,036,952
3100002 · Restricted for Debt Service	1,589,894
3100003 · Restricted by External Agreement	1,024,898
3100004 · Unrestricted	20,940,138
Total 310000 · Net Position	142,591,882
Net Income	1,183,747
<b>Total Net Position</b>	<b>143,775,629</b>
<b>TOTAL LIABILITIES &amp; NET POSITION</b>	<b>163,237,308</b>

**SOUTHEAST ALASKA POWER AGENCY**  
**Statement of Activities - Budget Comparison**  
**February 2018**

	Feb 2018	Budget	Jul'17-Feb'18	YTD Budget	Annual Budget
<b>Operating Income/Expense</b>					
<b>Operating Income</b>					
<b>410000 · Hydro Facility Revenues</b>					
410100 · Ketchikan Power Purchases	782,875	584,335	4,854,199	4,542,706	6,354,335
410200 · Petersburg Power Purchases	346,974	293,534	2,142,171	2,166,475	3,017,107
410300 · Wrangell Power Purchases	272,341	253,151	1,787,740	1,893,839	2,680,012
<b>Total 410000 · Hydro Facility Revenues</b>	<b>1,402,189</b>	<b>1,131,020</b>	<b>8,784,111</b>	<b>8,603,020</b>	<b>12,051,454</b>
<b>Total Operating Income</b>	<b>1,402,189</b>	<b>1,131,020</b>	<b>8,784,111</b>	<b>8,603,020</b>	<b>12,051,454</b>
<b>Operating Expense</b>					
<b>535000 · Hydro Ops-Suprvsn &amp; Engineering</b>					
535100 · Hyd/Ops Sup & Eng - Swan Lake	348	1,540	5,018	12,320	18,480
535150 · Hyd/Ops Sup & Eng - SWL SEAPA	48,171	150	63,297	78,400	79,000
535200 · Hyd/Ops Sup & Eng - WRG Office	68		68		
535250 · Hyd/Ops Sup & Eng -TYL SEAPA	140	1,650	1,686	14,900	21,500
535400 · Hyd/Op Sup & Eng - Proj Drawing	4,960	9,500	24,660	54,000	91,000
<b>Total 535000 · Hydro Ops-Suprvsn &amp; Engineering</b>	<b>53,686</b>	<b>12,840</b>	<b>94,730</b>	<b>159,620</b>	<b>209,980</b>
<b>537000 · Hydraulic Expenses</b>					
537150 · Hydraulic Expense - SWL SEAPA	-	-	-	-	2,500
537250 · Hydraulic Expense - TYL SEAPA	-	-	-	-	2,500
<b>Total 537000 · Hydraulic Expenses</b>	<b>-</b>	<b>-</b>	<b>-</b>	<b>-</b>	<b>5,000</b>
<b>538000 · Electric Expenses</b>					
538100 · Electric Expense - Swan Lake	594	2,000	5,800	17,000	25,000
538150 · Electric Expense - SWL SEAPA	-	3,000	8,300	23,000	35,000
538200 · Electric Expense - Tyee Lake	172	1,700	5,004	13,700	20,500
538250 · Electric Expense - TYL SEAPA	-	3,000	-	22,000	35,000
<b>Total 538000 · Electric Expenses</b>	<b>766</b>	<b>9,700</b>	<b>19,104</b>	<b>75,700</b>	<b>115,500</b>
<b>539000 · Misc Power Generation Expense</b>					
539100 · Misc Exp - Swan Lake	6,628	8,195	45,635	65,195	104,195
539150 · Misc Expense - SWL SEAPA	488	300	2,328	7,800	9,000
539151 · Misc Expense - SWL Communicatn	2,671	2,400	24,124	19,600	29,500
539200 · Misc Expense - Tyee Lake	5,760	7,500	43,166	57,500	87,500
539250 · Misc Expense - TYL SEAPA	2,012	6,000	26,929	23,000	36,500
539251 · Misc Expense - TYL Communicatn	6,998	7,900	55,251	60,800	91,400
<b>Total 539000 · Misc Power Generation Expense</b>	<b>24,556</b>	<b>32,295</b>	<b>197,434</b>	<b>233,895</b>	<b>358,095</b>
<b>540000 · Rents</b>					
540300 · FERC Land Use Fee - Swan Lake	(3,732)	1,670	7,934	13,320	20,000
540400 · FERC Land Use Fee - Tyee Lake	(10,945)	5,670	28,722	45,320	68,000
540500 · USDA Land Use Fee - USFS ROW	2,039	2,100	16,059	16,100	24,500
540600 · USDA Land Use Fee - STI	6,245	6,400	49,186	49,400	75,000
540601 · AK DNR Land Use Fee - STI	-	2,000	-	12,000	20,000
540700 · USDA Tyee Passive Reflector	110	125	871	900	1,400
540710 · USDA Etolin Burnett Radio	47	50	367	400	600
<b>Total 540000 · Rents</b>	<b>(6,236)</b>	<b>18,015</b>	<b>103,138</b>	<b>137,440</b>	<b>209,500</b>
<b>541000 · Hydro Power Station Maintenance</b>					
541100 · Maintenance - Swan Lake	338	2,400	11,570	19,200	29,000
541150 · Maintenance - SWL SEAPA	-	2,200	1,214	18,000	27,500
541200 · Maintenance - Tyee Lake	-	1,900	9,240	13,900	21,500
541250 · Maintenance - TYL SEAPA	-	2,400	3,473	17,900	27,500
<b>Total 541000 · Hydro Power Station Maintenance</b>	<b>338</b>	<b>8,900</b>	<b>25,498</b>	<b>69,000</b>	<b>105,500</b>
<b>543000 · Dams, Reservoirs &amp; Waterways</b>					
543100 · Dams Res & Waterwys - Swan Lake	-	400	1,133	3,400	5,000
543150 · Dams Res & Waterwys - SWL SEAPA	-	2,800	2,812	37,300	48,500
543200 · Dams Res & Waterwys - Tyee Lake	-	500	-	4,500	6,500
543250 · Dams Res & Waterwys - TYL SEAPA	-	3,000	17,000	45,000	45,000
<b>Total 543000 · Dams, Reservoirs &amp; Waterways</b>	<b>-</b>	<b>6,700</b>	<b>20,945</b>	<b>90,200</b>	<b>105,000</b>

**SOUTHEAST ALASKA POWER AGENCY**  
**Statement of Activities - Budget Comparison**  
**February 2018**

	Feb 2018	Budget	Jul'17-Feb'18	YTD Budget	Annual Budget
<b>544000 · Maintenance of Electric Plant</b>					
544100 · Maint Electric Plant-Swan Lake	43,357	50,514	396,825	404,110	606,166
<b>5442900 · TYL Plant Wages &amp; Benefits</b>					
5442911 · TYL Plant Wages/PTO	35,507	33,200	269,066	251,800	384,000
5442912 · TYL Plant Wages OT	1,610	1,940	26,388	16,290	36,000
5442920 · TYL Plant Benefit - Taxes	3,414	2,730	23,597	21,800	33,700
5442930 · TYL Plant Benefits - Insurance	11,007	7,340	62,373	58,720	89,200
5442940 · TYL Plant Benefits - Retirement	5,632	3,570	40,749	38,130	58,100
5442992 · TYL Plant Grant-Capital Payroll	-	-	(5,832)	-	-
<b>Total 5442900 · TYL Plant Wages &amp; Benefits</b>	<b>57,170</b>	<b>48,780</b>	<b>416,340</b>	<b>386,740</b>	<b>601,000</b>
<b>Total 544000 · Maintenance of Electric Plant</b>	<b>100,527</b>	<b>99,294</b>	<b>813,165</b>	<b>790,850</b>	<b>1,207,166</b>
<b>545000 · Plant Miscellaneous Maintenance</b>					
545100 · Plant Misc Maint - Swan Lake	847	4,900	6,854	39,200	59,000
545150 · Plant Misc Maint - SWL SEAPA	-	1,000	28,792	13,000	16,600
545200 · Plant Misc Maint - Tye Lake	660	1,700	12,585	13,600	20,500
545251 · Plant Misc Maint - WRG Warehous	-	-	8,382	13,000	13,000
<b>Total 545000 · Plant Miscellaneous Maintenance</b>	<b>1,507</b>	<b>7,600</b>	<b>56,613</b>	<b>78,800</b>	<b>109,100</b>
<b>561000 · Control System Maintenance</b>					
561150 · Control System Maint. - SWL	607	3,200	27,989	25,700	38,500
561250 · Control System Maint. - TYL	3,577	3,000	38,358	26,500	38,500
<b>Total 561000 · Control System Maintenance</b>	<b>4,184</b>	<b>6,200</b>	<b>66,348</b>	<b>52,200</b>	<b>77,000</b>
<b>562000 · Trans/Operations Station Exp</b>					
562100 · Trans/Ops Station - Swan Lake	385	1,250	385	10,000	15,000
562200 · Trans/Ops Station - Tye Lake	137	1,000	4,493	8,000	12,200
562250 · Trans/Ops Station-TYL SEAPA	2,190	1,700	14,618	11,500	17,200
<b>Total 562000 · Trans/Operations Station Exp</b>	<b>2,711</b>	<b>3,950</b>	<b>19,496</b>	<b>29,500</b>	<b>44,400</b>
<b>564000 · Trans/Submarine Cable Expense</b>					
564200 · Trans/Sub Cable Exp - Tye Lake	-	625	729	5,000	542,500
<b>Total 564000 · Trans/Submarine Cable Expense</b>	<b>-</b>	<b>625</b>	<b>729</b>	<b>5,000</b>	<b>542,500</b>
<b>571000 · Trans/Maint Overhead Lines(OHL)</b>					
571100 · Trans/Maint OHL - Swan Lake	-	1,000	2,610	8,300	24,000
571150 · Trans/Maint OHL - SWL SEAPA	-	1,000	-	8,000	303,223
571151 · Trans/Maint OHL - SWL ROW Clear	-	2,000	61,907	46,000	55,000
571200 · Trans/Maint OHL - Tye Lake	2,866	3,600	26,147	28,800	43,250
571250 · Trans/Maint OHL - TYL SEAPA	480	1,000	91,193	106,000	318,014
<b>5712900 · TYL Brushing Wages &amp; Benefits</b>					
5712911 · TYL Brushing Wages/PTO	10,137	12,300	84,993	101,800	151,000
5712912 · TYL Brushing Wages OT	428	750	5,683	8,150	14,000
5712920 · TYL Brushing Benefit - Taxes	936	570	7,449	9,690	13,500
5712930 · TYL Brushing Benefit- Insurance	3,669	3,740	29,352	29,920	44,600
5712940 · TYL Brushing Benefit- Retirement	2,122	2,400	18,329	19,260	28,900
5712992 · TYL Brush Grant-Capital Payroll	-	-	(206)	-	-
<b>Total 5712900 · TYL Brushing Wages &amp; Benefits</b>	<b>17,292</b>	<b>19,760</b>	<b>145,599</b>	<b>168,820</b>	<b>252,000</b>
571300 · Trans/Maint OHL STI Maintenance	350	1,000	256,560	245,500	515,907
571500 · Trans/Maint OHL STI Therml Scan	-	250	-	2,000	3,400
571700 · Trans/Maint OH STI Clearing	-	-	-	34,000	65,000
571800 · Trans/Maint OHL System Events	-	3,000	-	28,000	40,000
<b>Total 571000 · Trans/Maint Overhead Lines(OHL)</b>	<b>20,988</b>	<b>32,610</b>	<b>584,015</b>	<b>675,420</b>	<b>1,619,794</b>

**SOUTHEAST ALASKA POWER AGENCY**  
**Statement of Activities - Budget Comparison**  
**February 2018**

	Feb 2018	Budget	Jul'17-Feb'18	YTD Budget	Annual Budget
<b>920000 · Admin Wages &amp; Benefits</b>					
9201911 · Admin Wages/PTO	75,061	75,000	588,118	588,000	952,000
9201912 · Admin Wages - Overtime	-	160	-	1,220	2,000
9201920 · Admin Benefit - Taxes	6,366	5,400	39,374	43,200	65,000
9201930 · Admin Benefit - H&W Insurance	20,099	21,000	155,266	157,200	271,000
9201940 · Admin Benefit - Retirement	25,955	23,000	189,454	183,850	292,000
<b>Total 920000 · Admin Wages &amp; Benefits</b>	<b>127,480</b>	<b>124,560</b>	<b>972,212</b>	<b>973,470</b>	<b>1,582,000</b>
<b>921000 · Office Expenses</b>					
921100 · Office Supplies	398	1,250	8,428	10,000	15,000
921200 · Office Equipment	-	1,250	11,292	10,000	15,000
921300 · Phone, Courier, Internet	1,716	1,975	12,885	15,800	23,700
921400 · System Network / IT Support	2,936	5,000	23,969	35,700	55,700
921600 · Vehicle Expenses	1,457	350	3,529	2,800	4,200
<b>Total 921000 · Office Expenses</b>	<b>6,508</b>	<b>9,825</b>	<b>60,102</b>	<b>74,300</b>	<b>113,600</b>
<b>922000 · Legislative Affairs</b>	<b>-</b>	<b>5,000</b>	<b>28,000</b>	<b>38,000</b>	<b>58,000</b>
<b>923000 · Contract Services</b>					
923200 · Annual Financial Audit	-	-	32,674	35,000	35,000
923300 · Bank & Trustee Fees	2,757	2,800	9,659	9,900	16,400
923400 · Insurance Consultant	-	300	8,663	7,650	9,000
923500 · Investment Consultant	-	2,000	11,696	15,100	24,500
923600 · Legal Fees	11,229	15,000	93,720	120,000	180,000
923700 · Recruitment	1,134	1,000	13,241	15,000	26,000
923800 · Other Professional Services	904	4,250	6,039	34,000	51,000
<b>Total 923000 · Contract Services</b>	<b>16,024</b>	<b>25,350</b>	<b>175,692</b>	<b>236,650</b>	<b>341,900</b>
<b>924000 · Insurance</b>	<b>37,410</b>	<b>40,200</b>	<b>302,414</b>	<b>317,200</b>	<b>478,000</b>
<b>928000 · Regulatory Commission Expense</b>					
928001 · Other Regulatory Expense	-	400	148,692	202,800	204,700
928150 · FERC SWL Admin Fees	2,513	3,000	17,973	24,000	36,000
928151 · FERC SWL Other Expenses	-	2,000	19,160	32,000	122,000
928250 · FERC TYL Admin Fees	2,325	2,750	16,555	22,000	33,000
928251 · FERC TYL Other Expenses	-	-	-	-	-
<b>Total 928000 · Regulatory Commission Expense</b>	<b>4,838</b>	<b>8,150</b>	<b>202,380</b>	<b>280,800</b>	<b>395,700</b>
<b>930000 · General Expenses</b>					
930100 · Advertising Expense	1,503	250	2,288	2,000	3,000
930110 · Public Relations	762	2,700	16,885	21,700	32,500
930300 · Association Dues Expense	-	-	31,214	32,000	33,000
930310 · Professional Assn Dues	-	-	350	375	575
930400 · Board Meeting Expenses	3,765	4,000	21,590	29,000	37,000
930500 · Training Expense	1,283	2,500	24,211	22,000	30,500
930600 · Travel Expense	774	2,500	14,988	22,000	35,000
930700 · Non-Travel Incidental	195	350	946	2,600	4,000
<b>Total 930000 · General Expenses</b>	<b>8,283</b>	<b>12,300</b>	<b>112,472</b>	<b>131,675</b>	<b>175,575</b>
<b>931000 · Admin Rent</b>					
931010 · Office Rent	6,569	5,460	45,300	42,760	64,600
931100 · Apartment Rent - Ketchikan	1,823	1,900	15,070	14,800	22,000
<b>Total 931000 · Admin Rent</b>	<b>8,392</b>	<b>7,360</b>	<b>60,370</b>	<b>57,560</b>	<b>86,600</b>
<b>Total Operating Expense</b>	<b>411,961</b>	<b>471,474</b>	<b>3,914,855</b>	<b>4,507,280</b>	<b>7,939,910</b>



**SOUTHEAST ALASKA POWER AGENCY**  
**Statement of Activities - Budget Comparison**  
**February 2018**

	<b>Feb 2018</b>	<b>Budget</b>	<b>Jul'17-Feb'18</b>	<b>YTD Budget</b>	<b>Annual Budget</b>
<b>Net Operating Income</b>	990,228	659,546	4,869,255	4,095,740	4,111,544
<b>Nonoperating Income/Expense</b>					
<b>Nonoperating Income</b>					
941000 · Grant Income	-		147,715		
<b>942000 · Interest Income</b>					
942100 · Misc Interest Income	2,248		14,447		
942200 · Investment Interest Income	8,728		67,943		
<b>Total 942000 · Interest Income</b>	10,976		82,390		
<b>944000 · Realized Gain/Loss</b>					
944200 · Realized Gain/Loss on Invest	(4,916)		(12,522)		
<b>Total 944000 · Realized Gain/Loss</b>	(4,916)		(12,522)		
<b>945000 · Unrealized Gain/Loss</b>					
945200 · Unrealized Gain/Loss Investment	(10,713)		(76,657)		
<b>Total 945000 · Unrealized Gain/Loss</b>	(10,713)		(76,657)		
<b>946000 · Misc Nonoperating Income</b>					
946001 · Other Misc Income	1,500		6,578		
946002 · Gain/Loss on Property Dispositn	-		7,000		
<b>Total 946000 · Misc Nonoperating Income</b>	1,500		13,578		
<b>Total Nonoperating Income</b>	(3,153)		154,504		
<b>Nonoperating Expense</b>					
950001 · Misc Nonoperating Expense	(25,144)		(27,417)		
952000 · Bond Interest 2009 Series	27,069		216,552		
952001 · Bond Interest 2015 Series	36,052		288,053		
953000 · Depreciation Expense	398,265		3,165,712		
<b>954000 · Grant Expenses</b>					
954002 · Grant Contractual	-		196,639		
954008 · Grant Travel	-		-		
<b>Total 954000 · Grant Expenses</b>	-		196,639		
955000 · Interest Expense					
955200 · Investment Interest Expense	-		473		
<b>Total 955000 · Interest Expense</b>	-		473		
<b>Total Nonoperating Expense</b>	436,242		3,840,012		
<b>Net Nonoperating Income</b>	(439,396)		(3,685,508)		
<b>Net Income</b>	550,832	659,546	1,183,747	4,095,740	4,111,544





## JANUARY 2018 FINANCIAL OVERVIEW

The following tables provide a snapshot of SEAPA's revenues and expenses for JANUARY, 2018.

Revenues from kWh sales were over budget for the month:

FIRM kWh SALES	JANUARY Sales	JANUARY Budget	Prior Year Sales
Ketchikan	\$747,115	\$633,070	\$805,431
Petersburg	\$363,516	\$315,453	\$380,966
Wrangell	\$306,127	\$278,898	\$299,513
<b>Total Revenue</b>	<b>\$1,416,758</b>	<b>\$1,227,421</b>	<b>\$1,485,910</b>

Fiscal year-to-date revenues from kWh sales were under budget:

FIRM kWh SALES	YTD Sales	YTD Budget	Prior YTD Sales
Ketchikan	\$4,071,324	\$3,958,371	\$4,278,773
Petersburg	\$1,795,197	\$1,872,941	\$1,929,833
Wrangell	\$1,515,400	\$1,640,688	\$1,560,710
<b>Total Revenue</b>	<b>\$7,381,921</b>	<b>\$7,472,000</b>	<b>\$7,769,316</b>

FIRM kWh SALES (Year-Over-Year)	FISCAL YEAR	JANUARY kWh	YTD JUL-JAN kWh
	FY2018	20,834,683	108,557,667
	FY2017	21,851,612	114,254,651
	FY2016	18,456,727	103,265,957

Administrative and operating expenses were under budget:

Administrative & Operating Expenses	JANUARY Actual	JANUARY Budget	Prior Yr Expense
	\$430,562	\$519,984	\$429,148
	YTD Actual	YTD Budget	Prior YTD Expense
	\$3,502,894	\$3,468,227	\$3,080,967

Operations, Capital and Insurance Funds

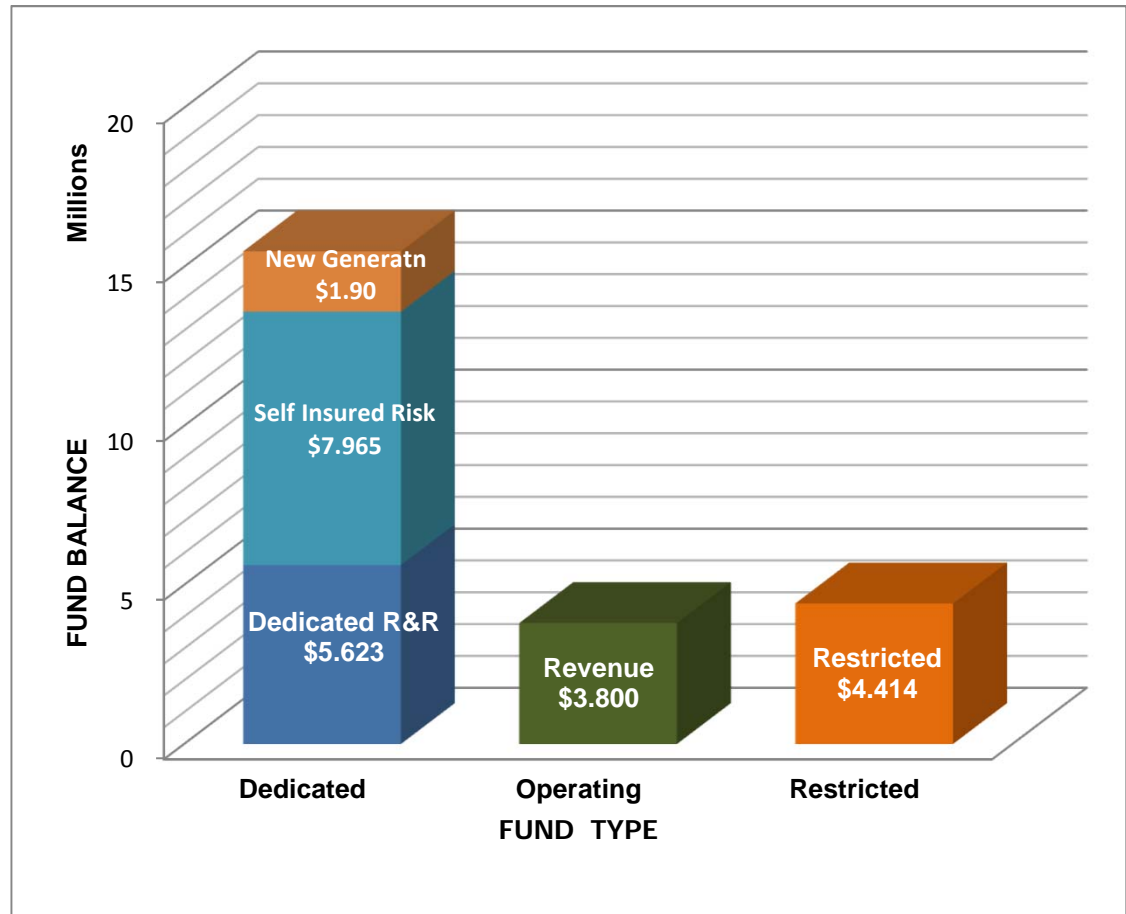
Revenue Fund FB	\$ 3,798,879
Required R&R Fund FB	1,000,359
Dedicated R&R Projects Fund FB	5,622,521
Commercial FB	1,000
New Generation Fund	1,898,740
Self Insured Risk Fund FNBA	7,965,365
<b>Total Operations, Capital and Insurance Funds</b>	<b>20,286,864</b>

Trustee Funds

2009 Bond Interest	\$ 75,918
2009 Bond Principal	601,370
2009 Bond Reserve	1,416,319
2015 Bond Interest	81,401
2015 Bond Reserve	213,735
<b>Total Trustee Funds</b>	<b>2,388,743</b>

Other Restricted Funds

STI - USFS CD WF	\$ 21,626
DNR Reclamation Fund WF	1,003,273
<b>Total Other Restricted Funds</b>	<b>1,024,899</b>
<b>Total Agency Funds</b>	<b>\$ 23,700,506</b>



Dedicated Funds

- New Generation = Project feasibility funding (hydro, wind, geothermal)
- Self-Insured Risk = Coverage for uninsured transmission lines, submarine cables and insurance deductibles.
- Dedicated R&R = Funds Replacement & Repair projects approved by the SEAPA Board in the budget.

Operating Funds

Revenue Fund & Commercial Checking: All SEAPA income is deposited to the Revenue Fund as required by Bond Indentures.

Restricted Funds (Legally or contractually restricted)

- Bonds = All Trustee Funds: Bond Interest, Principal, Reserve and Escrow accounts
- R&R = \$1,000,000 minimum balance required by bond indenture
- DNR = Alaska DNR Reclamation Agreement
- USFS = USFS Land Remediation Certificate of Deposit

**SOUTHEAST ALASKA POWER AGENCY**  
**Financial Position - Prior Year Comparison**  
as of January 31, 2018

	JAN 31, 2018	JAN 31, 2017
<b>ASSETS</b>		
<b>Current Assets</b>		
<b>Agency Funds</b>		
111000 · Ops/Capital/Insurance Funds	20,286,864	20,764,312
112000 · Trustee Funds	2,388,743	2,365,227
113000 · Other Restricted Funds	1,024,899	948,892
<b>Total Agency Funds</b>	23,700,506	24,078,432
<b>Accounts Receivable</b>		
110000 · Accounts Receivable	2,203,428	2,799,295
<b>Total Accounts Receivable</b>	2,203,428	2,799,295
<b>Other Current Assets</b>		
120200 · Other Receivables	5,800	4,606
120300 · Accrued Interest Receivable	27,897	16,761
120500 · Prepaid Fees	461,250	403,785
120700 · Inventory Assets	1,042,239	1,116,928
<b>Total Other Current Assets</b>	1,537,185	1,542,080
<b>Total Current Assets</b>	27,441,120	28,419,807
<b>Fixed Assets</b>		
130100 · Capital Assets	177,662,993	162,592,221
132200 · R&R Projects WIP Capital Improv	545,574	12,541,259
132900 · Accumulated Depreciation	(43,081,909)	(38,389,255)
<b>Total Fixed Assets</b>	135,126,658	136,744,224
<b>Other Assets</b>		
183000 · Deferred Assets	118,289	384,466
<b>Total Other Assets</b>	118,289	384,466
<b>TOTAL ASSETS</b>	<b>162,686,067</b>	<b>165,548,498</b>
<b>LIABILITIES &amp; EQUITY</b>		
<b>Liabilities</b>		
<b>Current Liabilities</b>		
<b>Accounts Payable</b>		
210100 · Accounts Payable General	48,494	1,640,741
<b>Total Accounts Payable</b>	48,494	1,640,741
<b>Other Current Liabilities</b>		
210150 · Other Current Liabilities	136,683	51,667
210152 · DNR Fund - CVEA KEA Portion	337,500	300,000
210300 · Reserve Interest Payable	161,554	136,759
210400 · Wages Payable	64,713	49,736
210401 · PTO Payable	174,773	162,212
210500 · Payroll Liabilities	28,302	57,322
<b>Total Other Current Liabilities</b>	903,525	757,695
<b>Total Current Liabilities</b>	952,020	2,398,436
<b>Long Term Liabilities</b>		
220100 · Series B Bonds 2009	6,390,000	7,160,000
220120 · 2009 Bond Issuance Discount	(25,478)	(29,501)
220121 · PERS Unfunded Liability WRG	1,005,501	1,005,501
220130 · Series 2015 Bonds	10,295,000	10,295,000
220131 · 2015 Bond Issuance Premium	844,227	899,285
<b>Total Long Term Liabilities</b>	18,509,250	19,330,285
<b>Total Liabilities</b>	19,461,270	21,728,721
<b>Equity</b>		
310000 · Net Position	142,591,882	142,657,410
Net Income	632,915	2,677,854
<b>Total Equity</b>	143,224,797	145,335,264
<b>TOTAL LIABILITIES &amp; EQUITY</b>	<b>162,686,067</b>	<b>167,063,985</b>

**SOUTHEAST ALASKA POWER AGENCY**  
**Statement of Activities - Prior Year Comparison**  
**January 2018**

	JAN 2018	JAN 2017
<b>Operating Income/Expense</b>		
<b>Operating Income</b>		
410000 · Hydro Facility Revenues	1,416,758	1,485,910
<b>Total Operating Income</b>	1,416,758	1,485,910
<b>Operating Expense</b>		
535000 · Hydro Ops-Suprvsn & Engineering	3,376	13,932
538000 · Electric Expenses	1,620	6,185
539000 · Misc Power Generation Expense	24,770	17,158
540000 · Rents	15,774	15,600
541000 · Hydro Power Station Maintenance	1,990	1,447
543000 · Dams, Reservoirs & Waterways	-	1,858
544000 · Maintenance of Electric Plant	108,739	100,574
545000 · Plant Miscellaneous Maintenance	1,600	4,125
561000 · Control System Maintenance	3,846	5,114
562000 · Trans/Operations Station Exp	1,829	2,524
564000 · Trans/Submarine Cable Expense	-	23
571000 · Trans/Maint Overhead Lines(OHL)	36,787	16,560
920000 · Admin Wages & Benefits	119,046	119,996
921000 · Office Expenses	8,123	10,019
922000 · Legislative Affairs	4,000	4,000
923000 · Contract Services	23,217	34,140
924000 · Insurance	36,959	38,279
928000 · Regulatory Commission Expense	9,203	8,963
930000 · General Expenses	21,679	20,962
931000 · Admin Rent	8,005	7,690
<b>Total Operating Expense</b>	430,562	429,148
<b>Net Operating Income</b>	986,196	1,056,762
<b>Nonoperating Income/Expense</b>		
<b>Nonoperating Income</b>		
942000 · Interest Income	10,823	7,577
944000 · Realized Gain/Loss	-	(2,204)
945000 · Unrealized Gain/Loss	(27,392)	5,386
946000 · Misc Nonoperating Income	5,078	-
<b>Total Nonoperating Income</b>	(11,491)	10,759
<b>Nonoperating Expense</b>		
950001 · Misc Nonoperating Expense	(2,253)	-
952000 · Bond Interest 2009 Series	27,069	29,642
952001 · Bond Interest 2015 Series	36,052	36,052
953000 · Depreciation Expense	394,436	360,246
954000 · Grant Expenses	48,924	1,614
<b>Total Nonoperating Expense</b>	504,229	427,555
<b>Net Nonoperating Income</b>	(515,720)	(416,796)
<b>Net Change in Financial Position</b>	<b>470,476</b>	<b>639,966</b>

**SOUTHEAST ALASKA POWER AGENCY**  
**Statement of Financial Position - Detail**  
**as of January 31, 2018**

**ASSETS**

**Current Assets**

**Agency Funds**

**111000 · Ops/Capital/Insurance Funds**

111100 · Revenue Fund FB	3,798,879
111200 · Required R&R Fund FB	1,000,359
111210 · Dedicated R&R Projects Fund FB	5,622,521
111300 · Commercial FB	1,000
111401 · New Generation Fund	1,898,740
111500 · Self Insured Risk Fund FNBA	7,965,365

**Total 111000 · Ops/Capital/Insurance Funds** 20,286,864

**112000 · Trustee Funds**

112100 · WF Trust 2009 Bond Interest	75,918
112200 · WF Trust 2009 Bond Principal	601,370
112300 · WF Trust 2009 Bond Reserve	1,416,319
112501 · WF Trust 2015 Bond Interest	81,401
112503 · WF Trust 2015 Bond Reserve	213,735

**Total 112000 · Trustee Funds** 2,388,743

**113000 · Other Restricted Funds**

113100 · STI - USFS CD WF	21,626
113500 · DNR Reclamation Fund WF	1,003,273

**Total 113000 · Other Restricted Funds** 1,024,899

**Total Agency Funds**

23,700,506

**Accounts Receivable**

110000 · Accounts Receivable	2,203,428
------------------------------	-----------

**Total Accounts Receivable**

2,203,428

**Other Current Assets**

120200 · Other Receivables	5,800
120300 · Accrued Interest Receivable	27,897
120500 · Prepaid Fees	
120520 · Prepaid Insurance	337,394
120530 · Prepaid Operating Expense	19,181
120540 · Prepaid USDA FS Land Use Fees	92,848
120550 · Prepaid Admin Benefits	11,826

**Total 120500 · Prepaid Fees** 461,250

**120700 · Inventory Assets**

1207001 · Inventory - Spares-Stores	151,834
1207003 · Inventory - SWL Winding Replace	890,405

**Total 120700 · Inventory Assets** 1,042,239

**Total 120000 - Other Current Assets**

1,537,185

**Total Current Assets**

27,441,120

**Fixed Assets**

**130100 · Capital Assets**

130110 · Swan Lake	30,632,174
130120 · Tyee Lake	31,425,703
130130 · SEAPA Office	809,677
132100 · Swan Tyee Intertie in Operation	114,795,439

**Total 130100 · Capital Assets** 177,662,993

**132200 · R&R Projects WIP Capital Improv**

132210 · R&R Projects - WIP Swan Lake	209,562
132220 · R&R Projects - WIP Tyee Lake	331,467
132240 · R&R Projects - WIP SEAPA Office	4,545

**Total 132200 · R&R Projects WIP Capital Improv** 545,574

**132900 · Accumulated Depreciation**

(43,081,909)

**Total 130000 - Fixed Assets**

135,126,658

**Other Assets**

183000 · Deferred Assets	
183003 · 2009 Bond - Refunded Discount	118,289

**Total 183000 · Deferred Assets** 118,289

**TOTAL ASSETS**

162,686,067

**SOUTHEAST ALASKA POWER AGENCY**  
**Statement of Financial Position - Detail**  
**as of January 31, 2018**

**LIABILITIES & EQUITY**

**Liabilities**

**Current Liabilities**

**Accounts Payable**

210100 · Accounts Payable General 48,494

**Total Accounts Payable** 48,494

**Other Current Liabilities**

210150 · Other Current Liabilities 136,683

210152 · DNR Fund - CVEA KEA Portion 337,500

210300 · Reserve Interest Payable 161,554

210400 · Wages Payable 64,713

210401 · PTO Payable 174,773

210500 · Payroll Liabilities

210521 · FICA Payable 5,080

210522 · SUI Tax Payable 2,341

210531 · IBEW H&W Payable 11,114

210540 · 457(b) Payable 1,083

210541 · IBEW Pension Payable 7,933

210550 · IBEW Dues Payable 751

Total 210500 · Payroll Liabilities 28,302

**Total Other Current Liabilities** 903,525

**Total Current Liabilities** 952,020

**Long Term Liabilities**

220100 · Series B Bonds 2009 6,390,000

220120 · 2009 Bond Issuance Discount (25,478)

220121 · PERS Unfunded Liability WRG 1,005,501

220130 · Series 2015 Bonds 10,295,000

220131 · 2015 Bond Issuance Premium 844,227

**Total Long Term Liabilities** 18,509,250

**Total Liabilities** 19,461,270

**Net Position**

310000 · Net Position

3100001 · Net Investment Capital Assets 119,036,952

3100002 · Restricted for Debt Service 1,589,894

3100003 · Restricted by External Agreement 1,024,898

3100004 · Unrestricted 20,940,138

Total 310000 · Net Position 142,591,882

Net Income 632,915

**Total Net Position** 143,224,797

**TOTAL LIABILITIES & NET POSITION** 162,686,067

**SOUTHEAST ALASKA POWER AGENCY**  
**Statement of Activities - Budget Comparison**  
**January 2018**

	Jan 2018	Budget	Jul'17-Jan'18	YTD Budget	Annual Budget
<b>Operating Income/Expense</b>					
<b>Operating Income</b>					
<b>410000 · Hydro Facility Revenues</b>					
410100 · Ketchikan Power Purchases	747,115	633,070	4,071,324	3,958,371	6,354,335
410200 · Petersburg Power Purchases	363,516	315,453	1,795,197	1,872,941	3,017,107
410300 · Wrangell Power Purchases	306,127	278,898	1,515,400	1,640,688	2,680,012
<b>Total 410000 · Hydro Facility Revenues</b>	<b>1,416,758</b>	<b>1,227,421</b>	<b>7,381,921</b>	<b>7,472,000</b>	<b>12,051,454</b>
<b>Total Operating Income</b>	<b>1,416,758</b>	<b>1,227,421</b>	<b>7,381,921</b>	<b>7,472,000</b>	<b>12,051,454</b>
<b>Operating Expense</b>					
<b>535000 · Hydro Ops-Suprvsn &amp; Engineering</b>					
535100 · Hyd/Ops Sup & Eng - Swan Lake	360	1,540	4,670	10,780	18,480
535150 · Hyd/Ops Sup & Eng - SWL SEAPA	321	74,740	15,126	78,250	79,000
535250 · Hyd/Ops Sup & Eng -TYL SEAPA	85	1,650	1,547	13,250	21,500
535400 · Hyd/Op Sup & Eng - Proj Drawing	2,610	9,500	19,700	44,500	91,000
<b>Total 535000 · Hydro Ops-Suprvsn &amp; Engineering</b>	<b>3,376</b>	<b>87,430</b>	<b>41,043</b>	<b>146,780</b>	<b>209,980</b>
<b>537000 · Hydraulic Expenses</b>					
537150 · Hydraulic Expense - SWL SEAPA	-	-	-	-	2,500
537250 · Hydraulic Expense - TYL SEAPA	-	-	-	-	2,500
<b>Total 537000 · Hydraulic Expenses</b>	<b>-</b>	<b>-</b>	<b>-</b>	<b>-</b>	<b>5,000</b>
<b>538000 · Electric Expenses</b>					
538100 · Electric Expense - Swan Lake	-	2,000	5,206	15,000	25,000
538150 · Electric Expense - SWL SEAPA	-	3,000	8,300	20,000	35,000
538200 · Electric Expense - Tyee Lake	1,620	1,700	4,832	12,000	20,500
538250 · Electric Expense - TYL SEAPA	-	3,000	-	19,000	35,000
<b>Total 538000 · Electric Expenses</b>	<b>1,620</b>	<b>9,700</b>	<b>18,337</b>	<b>66,000</b>	<b>115,500</b>
<b>539000 · Misc Power Generation Expense</b>					
539100 · Misc Exp - Swan Lake	4,124	8,000	39,007	57,000	104,195
539150 · Misc Expense - SWL SEAPA	-	250	1,841	7,500	9,000
539151 · Misc Expense - SWL Communicatn	3,873	2,400	21,453	17,200	29,500
539200 · Misc Expense - Tyee Lake	6,973	7,500	37,406	50,000	87,500
539250 · Misc Expense - TYL SEAPA	1,800	2,500	24,917	17,000	36,500
539251 · Misc Expense - TYL Communicatn	8,001	7,600	48,253	52,900	91,400
<b>Total 539000 · Misc Power Generation Expense</b>	<b>24,770</b>	<b>28,250</b>	<b>172,878</b>	<b>201,600</b>	<b>358,095</b>
<b>540000 · Rents</b>					
540300 · FERC Land Use Fee - Swan Lake	1,667	1,670	11,667	11,650	20,000
540400 · FERC Land Use Fee - Tyee Lake	5,667	5,670	39,667	39,650	68,000
540500 · USDA Land Use Fee - USFS ROW	2,039	2,100	14,020	14,000	24,500
540600 · USDA Land Use Fee - STI	6,245	6,400	42,941	43,000	75,000
540601 · AK DNR Land Use Fee - STI	-	2,000	-	10,000	20,000
540700 · USDA Tyee Passive Reflector	110	125	760	775	1,400
540710 · USDA Etolin Burnett Radio	47	50	320	350	600
<b>Total 540000 · Rents</b>	<b>15,774</b>	<b>18,015</b>	<b>109,375</b>	<b>119,425</b>	<b>209,500</b>
<b>541000 · Hydro Power Station Maintenance</b>					
541100 · Maintenance - Swan Lake	1,990	2,400	11,232	16,800	29,000
541150 · Maintenance - SWL SEAPA	-	2,200	1,214	15,800	27,500
541200 · Maintenance - Tyee Lake	-	1,800	9,240	12,000	21,500
541250 · Maintenance - TYL SEAPA	-	2,300	3,473	15,500	27,500
<b>Total 541000 · Hydro Power Station Maintenance</b>	<b>1,990</b>	<b>8,700</b>	<b>25,159</b>	<b>60,100</b>	<b>105,500</b>
<b>543000 · Dams, Reservoirs &amp; Waterways</b>					
543100 · Dams Res & Waterwys - Swan Lake	-	400	1,133	3,000	5,000
543150 · Dams Res & Waterwys - SWL SEAPA	-	2,800	2,812	34,500	48,500
543200 · Dams Res & Waterwys - Tyee Lake	-	500	-	4,000	6,500
543250 · Dams Res & Waterwys - TYL SEAPA	-	12,500	17,000	42,000	45,000
<b>Total 543000 · Dams, Reservoirs &amp; Waterways</b>	<b>-</b>	<b>16,200</b>	<b>20,945</b>	<b>83,500</b>	<b>105,000</b>



**SOUTHEAST ALASKA POWER AGENCY**  
**Statement of Activities - Budget Comparison**  
**January 2018**

	Jan 2018	Budget	Jul'17-Jan'18	YTD Budget	Annual Budget
<b>544000 · Maintenance of Electric Plant</b>					
544100 · Maint Electric Plant-Swan Lake	49,491	50,514	353,468	353,596	606,166
<b>5442900 · TYL Plant Wages &amp; Benefits</b>					
5442911 · TYL Plant Wages/PTO	39,869	35,000	233,559	218,600	384,000
5442912 · TYL Plant Wages OT	3,090	2,200	24,777	14,350	36,000
5442920 · TYL Plant Benefit - Taxes	3,409	3,050	20,183	19,070	33,700
5442930 · TYL Plant Benefits - Insurance	7,338	7,340	51,366	51,380	89,200
5442940 · TYL Plant Benefits - Retirement	5,541	5,840	35,116	34,560	58,100
5442992 · TYL Plant Grant-Capital Payroll	-	-	(5,832)	-	-
<b>Total 5442900 · TYL Plant Wages &amp; Benefits</b>	<b>59,247</b>	<b>53,430</b>	<b>359,170</b>	<b>337,960</b>	<b>601,000</b>
<b>Total 544000 · Maintenance of Electric Plant</b>	<b>108,739</b>	<b>103,944</b>	<b>712,638</b>	<b>691,556</b>	<b>1,207,166</b>
<b>545000 · Plant Miscellaneous Maintenance</b>					
545100 · Plant Misc Maint - Swan Lake	-	4,900	6,007	34,300	59,000
545150 · Plant Misc Maint - SWL SEAPA	-	1,000	28,792	12,000	16,600
545200 · Plant Misc Maint - Tyee Lake	1,600	1,700	11,924	11,900	20,500
545251 · Plant Misc Maint - WRG Warehous	-	-	8,382	13,000	13,000
<b>Total 545000 · Plant Miscellaneous Maintenance</b>	<b>1,600</b>	<b>7,600</b>	<b>55,105</b>	<b>71,200</b>	<b>109,100</b>
<b>561000 · Control System Maintenance</b>					
561150 · Control System Maint. - SWL	607	3,200	27,383	22,500	38,500
561250 · Control System Maint. - TYL	3,239	3,000	34,781	23,500	38,500
<b>Total 561000 · Control System Maintenance</b>	<b>3,846</b>	<b>6,200</b>	<b>62,164</b>	<b>46,000</b>	<b>77,000</b>
<b>562000 · Trans/Operations Station Exp</b>					
562100 · Trans/Ops Station - Swan Lake	-	1,250	-	8,750	15,000
562200 · Trans/Ops Station - Tyee Lake	239	1,000	4,357	7,000	12,200
562250 · Trans/Ops Station-TYL SEAPA	1,590	1,700	12,428	9,800	17,200
<b>Total 562000 · Trans/Operations Station Exp</b>	<b>1,829</b>	<b>3,950</b>	<b>16,785</b>	<b>25,550</b>	<b>44,400</b>
<b>564000 · Trans/Submarine Cable Expense</b>					
564200 · Trans/Sub Cable Exp - Tyee Lake	-	625	729	4,375	542,500
<b>Total 564000 · Trans/Submarine Cable Expense</b>	<b>-</b>	<b>625</b>	<b>729</b>	<b>4,375</b>	<b>542,500</b>
<b>571000 · Trans/Maint Overhead Lines(OHL)</b>					
571100 · Trans/Maint OHL - Swan Lake	-	1,000	2,610	7,300	24,000
571150 · Trans/Maint OHL - SWL SEAPA	-	1,000	-	7,000	303,223
571151 · Trans/Maint OHL - SWL ROW Clear	11,907	2,000	61,907	44,000	55,000
571200 · Trans/Maint OHL - Tyee Lake	4,985	3,600	23,281	25,200	43,250
571250 · Trans/Maint OHL - TYL SEAPA	-	1,000	90,713	105,000	318,014
<b>5712900 · TYL Brushing Wages &amp; Benefits</b>					
5712911 · TYL Brushing Wages/PTO	12,796	12,300	74,857	89,500	151,000
5712912 · TYL Brushing Wages OT	-	500	5,254	7,400	14,000
5712920 · TYL Brushing Benefit - Taxes	1,038	790	6,512	9,120	13,500
5712930 · TYL Brushing Benefit- Insurance	3,669	3,740	25,683	26,180	44,600
5712940 · TYL Brushing Benefit- Retirement	2,392	2,400	16,206	16,860	28,900
5712992 · TYL Brush Grant-Capital Payroll	-	-	(206)	-	-
<b>Total 5712900 · TYL Brushing Wages &amp; Benefits</b>	<b>19,895</b>	<b>19,730</b>	<b>128,307</b>	<b>149,060</b>	<b>252,000</b>
571300 · Trans/Maint OHL STI Maintenance	-	1,000	256,210	244,500	515,907
571500 · Trans/Maint OHL STI Therml Scan	-	250	-	1,750	3,400
571700 · Trans/Maint OH STI Clearing	-	-	-	34,000	65,000
571800 · Trans/Maint OHL System Events	-	4,000	-	25,000	40,000
<b>Total 571000 · Trans/Maint Overhead Lines(OHL)</b>	<b>36,787</b>	<b>33,580</b>	<b>563,027</b>	<b>642,810</b>	<b>1,619,794</b>



**SOUTHEAST ALASKA POWER AGENCY**  
**Statement of Activities - Budget Comparison**  
**January 2018**

	Jan 2018	Budget	Jul'17-Jan'18	YTD Budget	Annual Budget
<b>920000 · Admin Wages &amp; Benefits</b>					
9201911 · Admin Wages/PTO	67,904	75,000	513,057	513,000	952,000
9201912 · Admin Wages - Overtime	-	160	-	1,060	2,000
9201920 · Admin Benefit - Taxes	6,491	5,400	33,008	37,800	65,000
9201930 · Admin Benefit - H&W Insurance	20,098	21,000	135,167	136,200	271,000
9201940 · Admin Benefit - Retirement	24,553	23,000	163,500	160,850	292,000
<b>Total 920000 · Admin Wages &amp; Benefits</b>	<b>119,046</b>	<b>124,560</b>	<b>844,732</b>	<b>848,910</b>	<b>1,582,000</b>
<b>921000 · Office Expenses</b>					
921100 · Office Supplies	711	1,250	8,030	8,750	15,000
921200 · Office Equipment	-	1,250	11,292	8,750	15,000
921300 · Phone, Courier, Internet	1,582	1,975	11,168	13,825	23,700
921400 · System Network / IT Support	5,275	4,600	21,033	30,700	55,700
921600 · Vehicle Expenses	555	350	2,071	2,450	4,200
<b>Total 921000 · Office Expenses</b>	<b>8,123</b>	<b>9,425</b>	<b>53,594</b>	<b>64,475</b>	<b>113,600</b>
<b>922000 · Legislative Affairs</b>	<b>4,000</b>	<b>5,000</b>	<b>28,000</b>	<b>33,000</b>	<b>58,000</b>
<b>923000 · Contract Services</b>					
923200 · Annual Financial Audit	9,078	-	32,674	35,000	35,000
923300 · Bank & Trustee Fees	5,258	5,300	6,902	7,100	16,400
923400 · Insurance Consultant	-	300	8,663	7,350	9,000
923500 · Investment Consultant	1,665	2,000	11,696	13,100	24,500
923600 · Legal Fees	2,292	15,000	82,490	105,000	180,000
923700 · Recruitment	1,255	3,000	12,108	14,000	26,000
923800 · Other Professional Services	3,669	4,250	5,135	29,750	51,000
<b>Total 923000 · Contract Services</b>	<b>23,217</b>	<b>29,850</b>	<b>159,667</b>	<b>211,300</b>	<b>341,900</b>
<b>924000 · Insurance</b>	<b>36,959</b>	<b>40,200</b>	<b>265,004</b>	<b>277,000</b>	<b>478,000</b>
<b>928000 · Regulatory Commission Expense</b>					
928001 · Other Regulatory Expense	-	400	148,692	202,400	204,700
928150 · FERC SWL Admin Fees	2,513	3,000	15,460	21,000	36,000
928151 · FERC SWL Other Expenses	4,365	2,000	19,160	30,000	122,000
928250 · FERC TYL Admin Fees	2,325	2,750	14,230	19,250	33,000
928251 · FERC TYL Other Expenses	-	-	-	-	-
<b>Total 928000 · Regulatory Commission Expense</b>	<b>9,203</b>	<b>8,150</b>	<b>197,543</b>	<b>272,650</b>	<b>395,700</b>
<b>930000 · General Expenses</b>					
930100 · Advertising Expense	65	250	784	1,750	3,000
930110 · Public Relations	3,486	2,700	16,123	19,000	32,500
930300 · Association Dues Expense	9,076	10,000	31,214	32,000	33,000
930310 · Professional Assn Dues	-	-	350	375	575
930400 · Board Meeting Expenses	1,874	2,500	17,825	25,000	37,000
930500 · Training Expense	4,421	1,000	22,928	19,500	30,500
930600 · Travel Expense	2,757	2,000	14,213	19,500	35,000
930700 · Non-Travel Incidental	-	350	751	2,250	4,000
<b>Total 930000 · General Expenses</b>	<b>21,679</b>	<b>18,800</b>	<b>104,189</b>	<b>119,375</b>	<b>175,575</b>
<b>931000 · Admin Rent</b>					
931010 · Office Rent	6,180	5,400	38,731	37,300	64,600
931100 · Apartment Rent - Ketchikan	1,825	2,000	13,247	12,900	22,000
<b>Total 931000 · Admin Rent</b>	<b>8,005</b>	<b>7,400</b>	<b>51,979</b>	<b>50,200</b>	<b>86,600</b>
<b>Total Operating Expense</b>	<b>430,562</b>	<b>567,579</b>	<b>3,502,894</b>	<b>4,035,806</b>	<b>7,939,910</b>
<b>Net Operating Income</b>	<b>986,196</b>	<b>659,842</b>	<b>3,879,028</b>	<b>3,436,194</b>	<b>4,111,544</b>

**SOUTHEAST ALASKA POWER AGENCY**  
**Statement of Activities - Budget Comparison**  
**January 2018**

	Jan 2018	Budget	Jul'17-Jan'18	YTD Budget	Annual Budget
<b>Nonoperating Income/Expense</b>					
<b>Nonoperating Income</b>					
941000 · Grant Income	-		147,715		
<b>942000 · Interest Income</b>					
942100 · Misc Interest Income	1,972		12,199		
942200 · Investment Interest Income	8,851		59,215		
<b>Total 942000 · Interest Income</b>	10,823		71,414		
<b>944000 · Realized Gain/Loss</b>					
944200 · Realized Gain/Loss on Invest	-		(7,606)		
<b>Total 944000 · Realized Gain/Loss</b>	-		(7,606)		
<b>945000 · Unrealized Gain/Loss</b>					
945200 · Unrealized Gain/Loss Investment	(27,392)		(65,944)		
<b>Total 945000 · Unrealized Gain/Loss</b>	(27,392)		(65,944)		
<b>946000 · Misc Nonoperating Income</b>					
946001 · Other Misc Income	5,078		5,078		
946002 · Gain/Loss on Property Dispositn	-		7,000		
<b>Total 946000 · Misc Nonoperating Income</b>	5,078		12,078		
<b>Total Nonoperating Income</b>	(11,491)		157,657		
<b>Nonoperating Expense</b>					
950001 · Misc Nonoperating Expense	(2,253)		(2,272)		
952000 · Bond Interest 2009 Series	27,069		189,483		
952001 · Bond Interest 2015 Series	36,052		252,001		
953000 · Depreciation Expense	394,436		2,767,446		
<b>954000 · Grant Expenses</b>					
954002 · Grant Contractual	48,924		196,639		
<b>Total 954000 · Grant Expenses</b>	48,924		196,639		
955000 · Interest Expense					
955200 · Investment Interest Expense	-		473		
<b>Total 955000 · Interest Expense</b>	-		473		
<b>Total Nonoperating Expense</b>	504,229		3,403,769		
<b>Net Nonoperating Income</b>	(515,720)		(3,246,112)		
<b>Net Income</b>	470,476	659,842	632,915	3,436,194	4,111,544

Southeast Alaska Power Agency R&R CAPITAL PROJECTS	FY2018		WIP CAPITAL PROJECTS February 28, 2018	FY13	FY14	FY15	FY16	FY17	FY18	TOTAL Expenditures	Overall BUDGET
	Budget	Expenditures									
232-13 Communications Upgrade	\$ 89,758	32,729	Tyee satellite to be installed.	12,160	186,520	15,995	165,667	70,545	32,729	\$ 483,615	520,100
241-13 Stream Gauge TYL	\$ 55,000	10,866	Complete grouting FY18	37,845	562,635	22,753	106,528	75,368	10,866	\$ 815,994	862,024
256-15 Alarm Trip Protectn SWL-TYL	\$ 48,266	62,610	CLOSED NOV 2017			611	157,765	35,883	62,610	\$ 256,869	253,500
258-15 System Control Improve SWL-TY	\$ 39,650	1,625	CLOSED NOV 2017			28,766	44,194	4,441	1,625	\$ 79,026	116,800
259-15 Turbine Shutoff Valves TYL	\$ 35,000	-	In-house repairs FY18.			84,857	170,774	-	-	\$ 255,631	290,630
263-16 CTs-Relay CircSwitcr WRG	\$ 102,465	102,559	CLOSED NOV 2017				20,963	51,573	102,559	\$ 175,094	175,000
265-16 Marker Balls OHL TYL	\$ 805,104	796,517	CLOSED SEP 2017				-	4,896	796,517	\$ 801,412	810,000
269-16 Guy Thimbles STI	\$ 80,100	-	Yr1 of 3 installed Jun 2017				-	44,781	-	\$ 44,781	270,000
270-16 Dampeners OHL TYL	\$ 67,681	33,307	Yr1 of 3 installed SEP 2017				8,696	(8,696)	33,307	\$ 33,307	99,900
272-17 Needle Assembly TYL	\$ 65,610	30,377	CLOSED AUG 2017					51,713	30,377	\$ 82,091	123,000
273-17 XFMR Bushing TYL	\$ 47,232	17,792	CLOSED SEP 2017					7,768	17,792	\$ 25,560	55,000
275-17 Manifold TYL	\$ 20,689	22,590	CLOSED AUG 2017					19,637	22,590	\$ 42,228	39,000
276-17 Schweitzer RTAC SWL-TYL	\$ 26,800	27,602	CLOSED NOV 2017					10,124	27,602	\$ 37,725	37,000
278-17 Flashboard Kickers SWL	\$ 544,819	84,232	Being constructed.					-	84,232	\$ 84,232	544,819
279-18 Battery Monitoring System	\$ 61,000	7,019	On order						7,019	\$ 7,019	61,000
280-18 Boat Motors-Transom TYL	\$ 54,000	59,270	CLOSED SEP 2017						59,270	\$ 59,270	54,000
281-18 Bulkhead Repair SWL	\$ 223,000	21,059	May-Jun 2018						21,059	\$ 21,059	223,000
282-18 Control Rm Touchscrn SWL	\$ 36,000	7,600	Hardware update.						7,600	\$ 7,600	36,000
283-18 Dam Misc Metals SWL	\$ 186,000	16,372	Ladders, railing					526	16,372	\$ 16,898	186,000
284-18 Data Historian KTN	\$ 71,000	-	Hardware, programming						-	\$ -	71,000
285-18 Dock Floats SWL	\$ 58,000	17,888	EXPENSED NOV 2017						17,888	\$ 17,888	58,000
286-18 Duplex Housing SWL	\$ 393,000	-	Design-permitting.						-	\$ -	393,000
287-18 Flatbed WRG	\$ 42,000	42,866	CLOSED DEC 2017						42,866	\$ 42,866	42,000
288-18 Furnaces TYL	\$ 35,000	25,592	CLOSED DEC 2017						25,592	\$ 25,592	35,000
289-18 Governor Moderniztn SWL	\$ 92,000	2,175	Replace digital governors						2,175	\$ 2,175	92,000
290-18 Helipad Ramps STI	\$ 76,000	-	Helipad access ramps						-	\$ -	76,000
291-18 Meggar Relay Test Set	\$ 104,000	74,454	Test rack under construction						74,454	\$ 74,454	104,000
292-18 Office Walls KTN	\$ 55,000	4,932	March completion.						4,932	\$ 4,932	55,000
293-18 Phone Server KTN	\$ 76,000	-	Update server, phones						-	\$ -	76,000
294-18 Pickup TYL	\$ 38,500	32,256	CLOSED SEP 2017						32,256	\$ 32,256	38,500
295-18 Power Line Carrier SW-TY	\$ 48,000	50,149	Completion Jun 2018						50,149	\$ 50,149	48,000
296-18 Power Pole Replace SWL	\$ 49,000	-	Damaged pole replacement						-	\$ -	49,000
297-18 Powerhs Parapet Seal SWL	\$ 59,000	-	Seal parapet wall						-	\$ -	59,000
298-18 Unit Control PLC-RTD SWL	\$ 60,000	225	PLC Backplanes and RTDs						225	\$ 225	60,000
299-18 Runner Repair SWL	\$ 400,000	8,611	Repair runner cavitation						8,611	\$ 8,611	400,000
<b>Total WIP R&amp;R Capital Projects</b>	<b>\$4,244,674</b>	<b>\$1,593,273</b>		\$50,004	\$749,155	\$152,982	\$674,586	\$368,559	\$1,593,273	<b>\$4,837,957</b>	\$6,413,273

Date	Num	Vendor	FY18 BUDGET \$	Expenditures	Description
<b>232-13 Communications Upgrade</b>			<b>\$89,758</b>	-	Satellite dishes and telephone systems installed at Swan Lake and SEAPA Office in December 2013. Tyee Lake satellite dish permitting approved Sep 2015. Satellite service provider replaced in 2016. High-speed satellite installed at SWL, network swap-over ongoing. SWL phones upgraded to VOIP. Fiber-drop to SEAPA office installed. TYL satellite waiting on spot-beam. (Henson/Siedman/ Hammer)
	\$	12,160	<i>FY13 Expenditures</i>		
	\$	186,520	<i>FY14 Expenditures</i>		
	\$	(177,163)	<i>FY14 Capitalize SWL-SEA Office</i>		
	\$	15,995	<i>FY15 Expenditures</i>		
	\$	165,667	<i>FY16 Expenditures</i>		
	\$	70,545	<i>FY17 Expenditures</i>		
	\$	(68,113)	<i>FY17 Capitalize SWL-KTN Office</i>		
	\$	32,729	<i>FY18 Expenditures</i>		
07/20/17	20618	TexRUs		9,857	PARTIALLY CAPITALIZED FY14 SWL-SEAPA Office \$177,163
08/07/17	20758	TexRus		3,920	FY17 SWL-SEAPA Office \$ 68,113
08/15/17	422426	Satellite & Sound Inc		780	
08/23/17	Sat&Sound	Alaska Air		172	
08/31/17	52804	Sunrise Aviation Inc		900	
09/11/17	20940	TexRus		3,360	
11/08/17	21212	TexRus		120	
12/08/17	21344	TexRus		480	
12/31/17	52863	Sunrise Aviation Inc		1,200	
01/04/18	14227094901-4	Dowl, LLC		11,421	
01/15/18	21492	TexRus		520	
<b>Total 232-13 Communications Upgrade</b>				<b>238,339</b>	
<b>241-13 Stream Gauge TYL</b>			<b>\$55,000</b>	-	Logs cleared Jul 2013. Weir construction completed and helipad placed by Sep 2013. Initial grout work completed Apr 2016. Emergency shelter to be installed, after which USGS can install stream gage. Need for additional grout work evaluated as circumstances allow. (Henson / Schofield/Hammer)
	\$	37,845	<i>FY13 Expenditures</i>		
	\$	562,635	<i>FY14 Expenditures</i>		
	\$	(598,332)	<i>FY14 Weir &amp; Helipad Capitalized</i>		
	\$	22,753	<i>FY15 Expenditures</i>		
	\$	106,528	<i>FY16 Expenditures</i>		
	\$	75,368	<i>FY17 Expenditures</i>		
	\$	(34,499)	<i>FY17 Helipad2 Capitalized</i>		PARTIALLY CAPITALIZED:
	\$	(133,847)	<i>FY17 Grouting Capitalized</i>		FY14 CAPITALIZED WEIR & HELIPAD \$598,332
	\$	10,866	<i>FY18 Expenditures</i>		FY17 CAPITALIZED GROUT & HELIPAD \$168,345
07/09/17	31322	Temsco Helicopters, Inc.		2,741	
07/31/17	619	Tyee Payroll		206	
10/02/17	31729	Temsco Helicopters, Inc.		1,940	
10/02/17	31730	Temsco Helicopters, Inc.		3,987	
10/12/17	31760	Temsco Helicopters, Inc.		1,168	
10/24/17		Alaskan & Proud Mkt KTN		5	
10/25/17		Alaskan & Proud Mkt KTN		4	
10/30/17	224	Helicopter Air Alaska LLC		814	
<b>Total 241-13 Stream Gauge TYL</b>				<b>49,317</b>	
<b>256-15 Alarm Trip Protection SWL-</b>			<b>\$48,266</b>	-	Two-year project; review sensors and relays, reliability and critical protection issue. Board awarded to Segrity (Mar 2015). Complete by end-of calendar year. (Henson/ Schofield)
	\$	611	<i>FY15 Expenditures</i>		
	\$	157,765	<i>FY16 Expenditures</i>		
	\$	35,883	<i>FY17 Expenditures</i>		
	\$	(194,259)	<i>FY17 Capitalize completed portion</i>		
	\$	62,610	<i>FY18 Expenditures</i>		
08/31/17	17251	Segrity LLC		5,100	CLOSED NOV 2017 FY17 CAPITALIZED COMPLETED PORTION \$194,259
10/05/17	17258	Segrity LLC		4,050	FY18 CAPITALIZED \$62,611
10/05/17	17259	Segrity LLC		3,780	
11/06/17	17265	Segrity LLC		8,573	
11/17/17	17269	Segrity LLC		41,108	
12/31/17	655	CAPITALIZE SWL ALARM PROTECT		(37,718)	
12/31/17	655	CAPITALIZE TYL ALARM PROTECT		(24,893)	
<b>Total 256-15 Alarm Trip Protection SWL-TYL</b>				<b>-</b>	

Date	Num	Vendor	FY18 BUDGET \$	Expenditures	Description
<b>258-15 System Control Improve</b>			<b>\$39,650</b>		Two-year project to increase reliability at both plants; coordinate facilities' operations. Board awarded to Segrity (Mar 2015). Completion Nov 2017. (Henson / Schofield)
		\$ 28,766 <i>FY15 Expenditures</i>			
		\$ 44,194 <i>FY16 Expenditures</i>			
		\$ 4,441 <i>FY17 Expenditures</i>			
		\$ (77,401) <i>FY17 Capitalize completed poriton</i>			CLOSED NOV 2017
		\$ 1,625 <i>FY18 Expenditures</i>			FY17 CAPITALIZED COMPLETED PORTION \$77,401
11/06/17	17264	Segrity LLC		1,625	FY18 CAPITALIZED REMAINDER \$1,625
12/31/17	655	CAPITALIZE SWL SYSTEM IMPROVE.		(813)	
12/31/17	655	CAPITALIZE TYL SYSTEM IMPROVE.		(813)	
<b>Total 258-15 System Control Improvements SWL-TYL</b>				<b>-</b>	
<b>259-15 Turbine Shutoff Valves TYL</b>			<b>\$35,000</b>		Implementation of recommendations from HDR engineering review. Inhouse surface polishing and seal replacement for toroidal cylinder, as recommended by consultant. (Henson/Hammer)
		\$ 84,857 <i>FY15 Expenditures</i>			
		\$ 170,774 <i>FY16 Expenditures</i>			
		\$ (255,631) <i>Capitalized FY16</i>			
		\$ - <i>FY17 Expenditures</i>			
		\$ - <i>FY18 Expenditures</i>			PARTIALLY CAPITALIZED:
				<b>-</b>	FY16 COMPLETED PORTION \$255,631
<b>Total 259-15 Turbine Shutoff Valve TYL</b>				<b>(0)</b>	
<b>263-16 CTs-Relay WRG Circuit Swtc</b>			<b>\$102,465</b>		Additional protection-control relays and current-sensing equipment in the Wrangell switchyard. Electrical design (Electrical Power Systems). Installed SEP 2017; pending final engineering invoice. (Henson)
		\$ 20,963 <i>FY16 Expenditures</i>			
		\$ 51,573 <i>FY17 Expenditures</i>			
		\$ 102,559 <i>FY18 Expenditures</i>			
07/06/17	S344WRA15N	Samson Tug & Barge		521	
07/06/17	7103436164	ABB Inc.		22,956	CLOSED - NOV 2017
09/18/17	13456	Electric Power Constructors		69,484	FY18 CAPITALIZED \$175,094
11/17/17	13925	Electric Power Systems Inc.		9,599	
12/31/17	655	CAPITALIZE CTs-RELAY		(175,094)	
<b>Total 263-16 CTs-Relay WRG Circuit Sw</b>				<b>-</b>	
<b>265-16 Marker Balls OHL TYL</b>			<b>\$805,104</b>		Replacement of original marker balls on the Tyeve transmission line. Marker balls inventoried; Northern Powerline Constructors (Anchorage) successful bidder. Installed SEP 2017. (Henson)
		\$ 4,896 <i>FY17 Expenditures (includes marker ball inventory)</i>			
		\$ 796,517 <i>FY18 Expenditures</i>			
09/01/17	628R			(103,132)	
09/25/17	3129	Northern Powerline Constructors, Inc		103,132	
09/30/17	52827	Sunrise Aviation Inc		450	CLOSED - IN SERVICE SEP 2017
09/30/17	3173	Northern Powerline Constructors, Inc		588,651	
09/30/17	1806	Marker Ball Inventory		104,284	
10/31/17	641	CAPITALIZE MARKER BALLS		(801,412)	
<b>Total 265-16 Marker Balls OHL TYL</b>				<b>-</b>	
<b>269-16 Guy Thimbles STI</b>			<b>\$80,100</b>		Replace guy thimbles on STI. Three-year project scheduled during each spring shutdown. (Henson/Hammer)
		\$ 44,781 <i>FY17 Expenditures</i>			
		\$ (44,781) <i>FY17 Capitalized installed thimbles</i>			
		\$ - <i>FY18 Expenditures</i>			PARTIALLY CAPITALIZED:
05/25/17	T80591	Tyler Industrial Supply		1,302	FY17 - 53 CAPITALIZED \$44,781
05/25/17	T80591	INVENTORY - Guy Thimbles (Tyler Ir		2,383	
06/21/17	12852	Electric Power Constructors		43,479	
06/30/17	T80591	Tyler Industrial Supply		(2,383)	
06/30/17	611	FY17 CAPITALIZE INSTALLED PORTIC		(44,781)	
<b>Total 269-16 Guy Thimbles STI</b>				<b>-</b>	

Date	Num	Vendor	FY18 BUDGET \$	Expenditures	Description	
<b>270-16 Dampeners OHL TYL</b>			<b>\$67,681</b>		Replacement of dampeners on Tye transmission line over three years. Initial installation of 180 dampeners took place SEP 2017. (Henson/Hammer)	
	\$	8,696	<i>FY16 Expenditures</i>			
	\$	(8,696)	<i>FY17 Expenditures</i>			
	\$	33,307	<i>FY18 Expenditures</i>			
09/18/17	13448	Electric Power Constructors		24,611		
09/30/17	1805	Dampeners from inventory		8,696	YEAR 1 DAMPENERS IN SERVICE - SEP 2017	
10/31/17	641	CAPITALIZE FY18 DAMPERS		(33,307)		
<b>Total 270-16 Dampeners OHL TYL</b>				<b>-</b>		
<b>272-17 Needle Assembly TYL</b>			<b>\$65,610</b>		Repair to needle position feedback assembly. Prototype successfully tested Apr 2017. Remaining assemblies installed AUG 2017 followed by final drawings and documentation. (Henson)	
	\$	51,713	<i>FY17 Expenditures</i>			
	\$	(14,499)	<i>FY17 Capitalize Prototype</i>			
	\$	30,377	<i>FY18 Expenditures</i>			
07/19/17	17240	Segrity LLC		6,598		
08/10/17	S354WRA15N	Samson Tug & Barge		231		CAPITALIZED:
08/15/17	4427	Stikine Inn		44		FY17 PROTOTYPE INSTALLED \$14,499
08/22/17	4447	Stikine Inn		36		FY18 NEEDLE ASSEMBLIES \$67,592
08/29/17	17245	Segrity LLC		847		CLOSED - IN SERVICE - AUG 2017
08/31/17	17248	Segrity LLC		12,586		
08/31/17	624	Payroll - Tye		4,816		
10/05/17	17256	Segrity LLC		5,220		
10/31/17	641	CAPITALIZE Needle Assembly		(67,592)		
<b>Total 272-17 Needle Assembly TYL</b>				<b>-</b>		
<b>273-17 XFMR Bushing TYL</b>			<b>\$47,232</b>		Replace STI transformer bushing at Tye substation. Installed Sep 2017. (Henson)	
	\$	7,768	<i>FY17 Expenditures</i>			
	\$	17,792	<i>FY18 Expenditures</i>			
09/30/17	52827	Sunrise Aviation Inc		1,125		CLOSED - IN SERVICE - SEP 2017
10/31/17	13760	Electric Power Constructors		16,667		
10/31/17	641	CAPITALIZE XFMR BUSHING		(25,560)		
<b>Total 273-17 XFMR Bushing TYL</b>				<b>-</b>		
<b>275-17 Manifold Replace. TYL</b>			<b>\$20,869</b>		Replace manifold on governor at Tye Lake. Prototype installed APR 2017; second manifold installed AUG 2017. (Henson)	
	\$	19,637	<i>FY17 Expenditures</i>			
	\$	(18,131)	<i>FY17 One manifold capitalized</i>			
	\$	22,590	<i>FY18 Expenditures</i>			
08/15/17	4427	Stikine Inn		44		PARTIALLY CAPITALIZED:
08/22/17	4447	Stikine Inn		36		FY17 Manifold Prototype \$18,131
08/29/17	17244	Segrity LLC		2,146		FY18 Manifold \$24,097
08/31/17	17250	Segrity LLC		4,260		CLOSED - IN SERVICE - AUG 2017
08/31/17	624	Payroll		371		
10/05/17	17255	Segrity LLC		15,733		
10/31/17		CAPITALIZE Manifolds		(24,097)		
<b>Total 275-17 Manifold Replacement TYL</b>				<b>-</b>		

Date	Num	Vendor	FY18 BUDGET \$	Expenditures	Description
<b>276-17 Schweitzer RTAC Upgrades</b>			<b>\$26,800</b>		Replace existing relays with RTACs. RTACs programmed; installed in August. Completion pending drawings and documentation. (Henson)
	\$	10,124	<i>FY17 Expenditures</i>		
	\$	27,602	<i>FY18 Expenditures</i>		
08/15/17	4427	Stikine Inn		44	
08/22/17	4447	Stikine Inn		36	
08/24/17	21245	Pacific Wings Inc.		830	
08/27/17	99943	Pacific Airways Inc		440	
08/31/17	17247	Segrity LLC		24,011	
08/31/17	624	Payroll Tyee		645	
10/06/17	17261	Segrity LLC		1,595	
12/31/17	655	CAPITALIZE SWL RTAC		(18,285)	
12/31/17	655	CAPITALIZE TYL RTAC		(19,441)	
<b>Total 276-17 Schweitzer RTAC Upgrade</b>				<b>-</b>	
<b>278-17 Flashboard-Kickers SWL</b>			<b>\$544,819</b>		Spare set of flashboards and kickers for SWL. Under construction by Kuenz; scheduled for Oct 2018 delivery. (Schofield)
	\$	-	<i>FY17 No expenditures</i>		
	\$	84,232	<i>FY18 Expenditures</i>		
10/25/17	I01412112	Alaska Dispatch News		62	
12/22/17	3206	Kuenz America Inc		84,170	
<b>Total 278-17 Flashboard-Kickers SWL</b>				<b>84,232</b>	
<b>279-18 Battery Monitoring Systm</b>			<b>\$61,000</b>		Battery and hydrogen monitoring system for both facilities. System DELIVERED. TYL install 80% complete; SWL install in progress. (Siedman)
	\$	7,019	<i>FY18 Expenditures</i>		
08/21/17	243579	First City Electric, Inc.		6,917	
02/23/18	S411KET46N	Samson Tug & Barge		103	
<b>Total 279-18 Battery Monitoring Systm</b>				<b>7,019</b>	
<b>280-18 Boat Motors-Transom TYL</b>			<b>\$54,000</b>		Replacement of motors and extension of transom on Svendsen boat. (Henson)
	\$	59,270	<i>FY18 Expenditures</i>		
09/08/17	1107	Svendsen Marine		6,251	
10/03/17	6152006	Bay Company Enterprises, LLC		46,019	
10/31/17	6152006	Bay Company Enterprises, LLC		7,000	
10/31/17	641	CAPITALIZE BOAT MOTORS-TRANSC		(59,270)	
<b>Total 280-18 Boat Motors-Transom TYL</b>				<b>-</b>	
<b>281-18 Bulkhead Repair SWL</b>			<b>\$223,000</b>		Repair of marine bulkhead at SWL permitted. Contractor award in April. (Schofield)
	\$	21,059	<i>FY18 Expenditures</i>		
11/08/17	4650	Landing Hotel & Restaurant		131	
12/04/17	7047	McMillen LLC		6,396	
01/17/18	7150	McMillen LLC		13,176	
02/26/18	34685	Ketchikan Daily News		90	
02/28/18	7279	McMillen LLC		1,265	
<b>Total 281-18 Bulkhead Repair SWL</b>				<b>21,059</b>	
<b>282-18 Control Rm Touchscrn SWL</b>			<b>\$36,000</b>		Control Room hardware update at SWL. Engineering at 30%. (Siedman)
	\$	7,600	<i>FY18 Expenditures</i>		
02/09/18	18280	Segrity LLC		7,600	
<b>Total 282-18 Control Rm Touchscrn SWL</b>				<b>7,600</b>	



Date	Num	Vendor	FY18 BUDGET \$	Expenditures	Description
<b>283-18 Dam Misc Metals SWL</b>			<b>\$186,000</b>		Installation of SWL access ladders, handrails, trigger guard. Contract award to BAM LLC approved in Aug 2017. Installation is dependent upon lake levels, but scheduled to begin Apr 17. (Schofield)
	\$	526	<i>FY17 Expenditures</i>		
	\$	16,372	<i>FY18 Expenditures</i>		
07/20/17	34043	Ketchikan Daily News		80	
07/22/17	3327575	Daily Journal of Commerce		74	
07/30/17	ADN201707	Alaska Dispatch News		82	
08/05/17	64255	Pilot Publishing, Inc.		70	
08/05/17	64239	Wrangell Sentinel		58	
09/13/17	6855	McMillen LLC		13,464	
11/01/17	6921	McMillen LLC		1,680	
12/04/17	7046	McMillen LLC		480	
01/17/18	7149	McMillen LLC		385	
<b>Total 283-18 Dam Misc Metals SWL</b>				<b>16,898</b>	
<b>284-18 Data Historian KTN</b>			<b>\$71,000</b>		Data Historian upgrade, hardware and programming. On hold pending further evaluation. (Siedman)
	\$	-	<i>FY18 Expenditures</i>		
<b>Total 284-18 Data Historian KTN</b>				<b>-</b>	
<b>285-18 Dock Floats SWL</b>			<b>\$58,000</b>		Replace piling hoops and add flotation at SWL dock float. Parts ordered. Installation performed Nov 2017. (Schofield)
	\$	17,888	<i>FY18 Expenditures</i>		
10/17/17	2160671	Madison Lumber & Hardware Inc		2,185	
10/17/17	49446	Mohawk Metal Company		2,685	CLOSED NOV 2017
10/20/17	S375KET28N	Samson Tug & Barge		133	EXPENSED \$17,888
11/03/17	2202801	Madison Lumber & Hardware Inc		30	
11/06/17	2208501	Madison Lumber & Hardware Inc		189	
11/06/17	2208581	Madison Lumber & Hardware Inc		157	
11/13/17	20171113	Diversified Diving Service		12,508	
12/31/17	655	EXPENSE DOCK FLOATS		(17,888)	
<b>Total 285-18 Dock Floats SWL</b>				<b>0</b>	
<b>286-18 Duplex Housing SWL</b>			<b>\$393,000</b>		Replace one SWL housing unit with prefab duplex. Permitting process initiated Nov 2017. Architectural design underway. (Schofield)
	\$	905	<i>FY18 Expenditures</i>		
11/08/17	100959	Pacific Airways Inc		880	
11/14/17	ADEC	CC Vendors		25	
<b>Total 286-18 Duplex Housing SWL</b>				<b>905</b>	
<b>287-18 Flatbed WRG</b>			<b>\$42,000</b>		Flatbed truck for WRG warehouse. Delivered in December. (Henson)
	\$	42,866	<i>FY18 Expenditures</i>		
11/21/17	FORD201711	Horizon Ford		41,716	
12/01/17	S387WRA17N	Samson Tug & Barge		1,150	CLOSED DEC 2017
12/31/17	655	CAPITALIZED FLATBED		(42,866)	CAPITALIZED \$42,866
<b>Total 287-18 Flatbed WRG</b>				<b>-</b>	
<b>288-18 Furnaces TYL</b>			<b>\$35,000</b>		Replace furnaces (5) in TYL housing. November installation. (Henson)
	\$	25,592	<i>FY18 Expenditures</i>		
11/30/17	52857	Sunrise Aviation Inc		1,620	
12/06/17	2305IN	Schmolck Mechanical SIT		24,077	CLOSED DEC 2017
12/07/17	R184974IN	Schmolck Mechanical SIT		(105)	CAPITALIZED \$25,592
12/31/17	655	CAPITALIZED FURNACES		(25,592)	
<b>Total 288-18 Furnaces TYL</b>				<b>-</b>	
<b>289-18 Governor Modernizatn SWI</b>			<b>\$92,000</b>		Update governor control hardware and software at SWL. Parts on order, engineering underway. 30% complete. (Siedman)
	\$	2,175	<i>FY18 Expenditures</i>		
02/09/18	18283	Segrity LLC		2,175	
<b>Total 289-18 Governor Modernizatn SWL</b>				<b>2,175</b>	



Date	Num	Vendor	FY18 BUDGET \$	Expenditures	Description
<b>290-18 Helipad Ramps STI</b>			<b>\$76,000</b>		Build and install ramps for personnel access to STI helipads.
	\$	-	<i>FY18 Expenditures</i>		Installation spring 2018. (Henson/Hammer)
<b>Total 290-18 Helipad Ramps STI</b>				-	
<b>291-18 Meggar Relay Test Set</b>			<b>\$104,000</b>		Purchase relay test set for rotating use at all SEAPA locations. Test set purchased. Test rack constructed.
	\$	74,454	<i>FY18 Expenditures</i>		Engineering 30%. (Siedman)
09/25/17	5590452896	Megger		72,089	
09/29/17	14644	Hardcraft Industries, Inc.		2,094	
10/06/17	S370KET23N	Samson Tug & Barge		143	
10/17/17		Madison Lumber & Hardware Inc		7	
10/17/17		Madison Lumber & Hardware Inc		10	
10/19/17		Madison Lumber & Hardware Inc		90	
10/23/17		Madison Lumber & Hardware Inc		21	
<b>Total 291-18 Meggar Relay Test Set</b>				74,454	
<b>292-18 Office Walls KTN</b>			<b>\$55,000</b>		Create two offices at White Cliff location. Construction completed Mar 2018. (Schofield)
	\$	4,932	<i>FY18 Expenditures</i>		
12/08/17	2208	Welsh Whiteley Architects, LLC		3,483	
12/11/17	201700000154	Ketchikan City of 334		1,062	
02/01/18	2231	Welsh Whiteley Architects, LLC		387	
<b>Total 292-18 Office Walls KTN</b>				4,932	
<b>293-18 Phone Server KTN</b>			<b>\$76,000</b>		Replace obsolete phone server in Ketchikan office; upgrade handsets. Options evaluation in progress. (Siedman)
	\$	-	<i>FY18 Expenditures</i>		
<b>Total 293-18 Phone Server KTN</b>				-	
<b>294-18 Pickup TYL</b>			<b>\$38,500</b>		Pickup replacement for Tye. 2017 Ford F150 delivered to Wrangell. (Henson)
	\$	32,256	<i>FY18 Expenditures</i>		
08/18/17	FORD201708	Horizon Ford		30,027	
08/24/17	S358WRA19N	Samson Tug & Barge		1,129	CLOSED - IN SERVICE SEP 2017
09/21/17	1572	Stikine Transportation		1,100	
10/31/17	641	CAPITALIZE PICKUP		(32,256)	
<b>Total 294-18 Pickup TYL</b>				-	
<b>295-18 Power Line Carrier SW-TY</b>			<b>\$48,000</b>		Add power line carrier channel from SWL to TYL. Channel installed and successfully tested October 2017. SCADA screens to be updated at SWL during spring shutdown. (Henson/Hammer)
	\$	50,149	<i>FY18 Expenditures</i>		
09/25/17	421740046	Hubbell Power Systems, Inc.		34,833	
10/05/17	S370WRA12N	Samson Tug & Barge		54	
10/24/17	100786	Pacific Airways Inc		880	
10/24/17		Alaskan & Proud Mkt KTN		46	
10/24/17		Alaskan & Proud Mkt KTN		46	
10/25/17	4571	Landing Hotel & Restaurant		158	
10/25/17	4570	Landing Hotel & Restaurant		177	
10/25/17		CC KTN Airport		3	
10/25/17		CC KTN Airport		26	
10/26/17		Alltek Network Solutions Inc		77	
10/31/17	52838	Sunrise Aviation Inc		1,950	
10/31/17	422060827	Hubbell Power Systems, Inc.		6,770	
01/08/18	18278	Segrity LLC		5,130	
<b>Total 295-18 Power Line Carrier SW-TY</b>				50,149	

**Southeast Alaska Power Agency**

**WORK-IN-PROGRESS R&R Capital Projects as of FEB 28, 2018**

Date	Num	Vendor	FY18 BUDGET \$	Expenditures	Description
<b>296-18 Power Pole Replace SWL</b>			<b>\$49,000</b>		Replace damaged Pole 197 on SWL transmission line, spring shutdown 2018. (Henson/Hammer)
	\$	-	<i>FY18 Expenditures</i>		
<b>Total 296-18 Power Pole Replace SWL</b>				<u>-</u>	
<b>297-18 Powerhs Parapet Seal SWL</b>			<b>\$59,000</b>		Surface coating on exterior parapet wall of SWL powerhouse. Work is weather dependent. Working with contractor on quote. (Schofield)
	\$	-	<i>FY18 Expenditures</i>		
<b>Total 297-18 Powerhs Parapet Seal SWL</b>				<u>-</u>	
<b>298-18 Unit Control PLC-RTD SWL</b>			<b>\$60,000</b>		Update PLC backplanes and RTDs at SWL; in design phase. (Siedman)
	\$	225	<i>FY18 Expenditures</i>		
02/09/18	18282	Segrity LLC		<u>225</u>	
<b>Total 298-18 Unit Control PLC-RTD SWL</b>				<u>225</u>	
<b>299-18 Runner Repair SWL</b>			<b>\$400,000</b>		Surface coating on exterior parapet wall of SWL powerhouse. Work is weather dependent. Contract award in April. (Schofield)
	\$	8,611	<i>FY18 Expenditures</i>		
02/01/18	1Partial	Beacon Hill Consulting Services		<u>8,400</u>	
02/28/18	8553620	Oregonian Media Group		<u>211</u>	
<b>Total 299-18 Runner Repair SWL</b>				<u>8,611</u>	
<b>Total WIP R&amp;R Capital Projects</b>			<b>\$4,244,854</b>	<b>\$ 565,916</b>	

\* Total Work-In-Progress includes deductions for capitalized projects, and therefore does not match the Total Expenditures on the Summary page.

# SOUTHEAST ALASKA POWER AGENCY - DISBURSEMENTS

Accounts	Total
Revenue Fund . . . . .	\$ 654,509.34
R&R Fund . . . . .	\$ 37,044.04
<b>TOTAL</b>	<b>\$ <u>691,553.38</u></b>

SUGGESTED MOTION
I move to accept disbursements for the months of February & March 2018 in the amount of \$691,553.38.

Significant expenditures during this period:		
McMillen LLC	- Hydrosite analysis and bulkhead repair	\$ 78,579
Wells Fargo	- Principal & Interest for 2009 Series and 2015 Series Bonds	\$ 264,900

## February and March 2018

Invoice No.	Company (Vendor)	Revenue Fund	R&R Fund	New Gen
18010755	Alaska Broadcast Communications, Inc.	280.00		
18010806	Alaska Broadcast Communications, Inc.	125.00		
18010807	Alaska Broadcast Communications, Inc.	125.00		
18010810	Alaska Broadcast Communications, Inc.	256.20		
18020867	Alaska Broadcast Communications, Inc.	512.40		
18020868	Alaska Broadcast Communications, Inc.	125.00		
18020869	Alaska Broadcast Communications, Inc.	125.00		
APCM201801	Alaska Permanent Capital Inc	1,665.26		
APCM201802	Alaska Permanent Capital Inc	1,663.78		
1708	Alpine Mini Mart	17.75		
1717	Alpine Mini Mart	45.17		
18336	Angerman's Inc	92.65		
18348	Angerman's Inc	22.95		
18356	Angerman's Inc	114.95		
18369	Angerman's Inc	141.90		
2855	Ascent Law Partners LLP	7,810.00		
2856	Ascent Law Partners LLP	1,032.50		
i922461	Austin Powder	350.00		
54087	Bay Company Enterprises, LLC	70.60		
54106	Bay Company Enterprises, LLC	282.78		
54113	Bay Company Enterprises, LLC	88.20		
54120	Bay Company Enterprises, LLC	10.47		
54135	Bay Company Enterprises, LLC	120.45		
54194	Bay Company Enterprises, LLC	107.46		
6152093	Bay Company Enterprises, LLC	742.15		
54229	Bay Company Enterprises, LLC	128.98		
1Partial	Beacon Hill Consulting Services	8,400.00		
2Partial	Beacon Hill Consulting Services	-	1,575.00	
CAM201803	Cambria Properties LLC	1,525.00		
244209	City Market	124.48		
255976	City Market	39.38		
28903	CoastAlaska, Inc.	2,145.00		
C5598	Copper River Fleece	135.15		
3334330	Daily Journal of Commerce	89.70		
3334191	Daily Journal of Commerce	-	80.50	
3334445	Daily Journal of Commerce	-	71.30	
3334490	Daily Journal of Commerce	75.90		
142270949015	Dowl, LLC	4,960.00		
14402	Electric Power Systems Inc.	780.00		
41293	Evans Keane LLP	155.00		
41359	Evans Keane LLP	1,994.27		

# SOUTHEAST ALASKA POWER AGENCY - DISBURSEMENTS

Invoice No.	Company (Vendor)	Revenue Fund	R&R Fund	New Gen
41421	Evans Keane LLP	588.97		
L17230-00	Federal Energy Regulatory Commission	11,737.09		
L17235-00	Federal Energy Regulatory Commission	42,886.22		
4495	Freeman & Sons Machine and Fabrication	81.00		
37127	Frontier Shipping & Copyworks	55.00		
37349	Frontier Shipping & Copyworks	4.50		
9672286706	Grainger	30.58		
9679096892	Grainger	1,470.60		
9679571241	Grainger	317.00		
9691415682	Grainger	33.65		
9692799621	Grainger	172.20		
9694411647	Grainger	34.13		
9695007568	Grainger	172.29		
9704132027	Grainger	21.45		
9704132035	Grainger	126.98		
9721432475	Grainger	238.75		
365654	Hammer & Wikan	412.89		
5351	I Even Do Windows	300.00		
34560	Ketchikan Daily News	270.80		
34589	Ketchikan Daily News	65.30		
34685	Ketchikan Daily News	-	89.90	
KDN201802	Ketchikan Daily News	518.35		
KGB201803	Ketchikan Gateway Borough	4,810.23		
KGB201804	Ketchikan Gateway Borough	4,810.23		
12518	Ketchikan Stitches	30.00		
5246	Landing Hotel & Restaurant	124.00		
5251	Landing Hotel & Restaurant	120.00		
5254	Landing Hotel & Restaurant	240.00		
4808	Landing Hotel & Restaurant	1,215.79		
5256	Landing Hotel & Restaurant	249.85		
5257	Landing Hotel & Restaurant	349.29		
5258	Landing Hotel & Restaurant	264.80		
5260	Landing Hotel & Restaurant	240.00		
5266	Landing Hotel & Restaurant	270.57		
250764	Leonard USA	882.09		
82100122064	Les Schwab	1,284.96		
98369	LNM Services	71.03		
98373	LNM Services	18.43		
98380	LNM Services	71.96		
98405	LNM Services	67.29		
98446	LNM Services	79.88		
98459	LNM Services	69.28		
2388601	Madison Lumber & Hardware Inc	20.99		
MARBLE201803	Marble Construction	321.00		
MARBLE201804	Marble Construction	321.00		
288847940498	Marsh USA Inc.	707.00		
288844008541	Marsh USA Inc.	1,054.00		
7161	McMillen LLC	51,747.55		
7279	McMillen LLC	-	1,265.00	
7259	McMillen LLC	25,566.11		
5868	Meridian Environmental	479.55		
ANCS0708396	NC Machinery	2,561.84		
NWHA2018	Northwest Hydroelectric Association	1,000.00		
18030630	NRECA 798185 Group Ins	17,271.27		
18030630A	NRECA 798324 Group Ins Admin	1,522.37		
18038040A	NRECA 798330 RSP Admin	625.07		
18038040	NRECA798369 RSP	27,850.98		
420934	Ottesen's Inc	623.22		
420988	Ottesen's Inc	6.78		

# SOUTHEAST ALASKA POWER AGENCY - DISBURSEMENTS

Invoice No.	Company (Vendor)	Revenue Fund	R&R Fund	New Gen
421108	Ottesen's Inc	33.96		
421482	Ottesen's Inc	30.00		
421613	Ottesen's Inc	71.96		
421676	Ottesen's Inc	32.99		
421959	Ottesen's Inc	27.98		
422021	Ottesen's Inc	12.99		
422341	Ottesen's Inc	17.94		
422416	Ottesen's Inc	13.99		
422421	Ottesen's Inc	15.99		
422524	Ottesen's Inc	138.49		
35077	Petersburg Bottled Gas	79.00		
35140	Petersburg Bottled Gas	69.00		
570814	Petro Marine Services-KTN	289.11		
33204	Petro Marine Services-KTN	169.20		
42316	Petro Marine Services-WRG	325.03		
30191	Petro Marine Services-WRG	270.63		
569043	Petro Marine Services-WRG	213.94		
30291	Petro Marine Services-WRG	142.90		
30379	Petro Marine Services-WRG	302.72		
30449	Petro Marine Services-WRG	465.00		
30472	Petro Marine Services-WRG	362.11		
31402	Petro Marine Services-WRG	371.80		
31431	Petro Marine Services-WRG	272.44		
31470	Petro Marine Services-WRG	1,417.02		
31501	Petro Marine Services-WRG	115.04		
31617	Petro Marine Services-WRG	287.59		
31957	Petro Marine Services-WRG	38.28		
31963	Petro Marine Services-WRG	372.80		
33304	Petro Marine Services-WRG	302.75		
1012	Ray Matiashowski & Associates	4,000.00		
1022	Ray Matiashowski & Associates	4,000.00		
24552	Rocky's Marine Inc.	21.77		
S402WRA03N	Samson Tug & Barge	98.55		
S109KET02I	Samson Tug & Barge	126.93		
S411KET46N	Samson Tug & Barge	-	51.47	
S411KET48N	Samson Tug & Barge	-	51.46	
422661	Satellite & Sound Inc	250.00		
422707	Satellite & Sound Inc	250.00		
6770	SE Island Fuel	152.14		
18280	Segrity LLC		7,599.50	
18281	Segrity LLC	2,970.00		
18282	Segrity LLC		225.00	
18283	Segrity LLC		2,175.00	
18285	Segrity LLC	198.31		
18286	Segrity LLC	2,767.50		
18287	Segrity LLC	-	2,025.00	
18288	Segrity LLC	-	6,450.00	
18289	Segrity LLC	-	6,675.00	
18290	Segrity LLC	-	1,950.00	
457426	Sentry Hardware & Marine	34.99		
457432	Sentry Hardware & Marine	26.97		
457726	Sentry Hardware & Marine	34.99		
457756	Sentry Hardware & Marine	0.65		
457817	Sentry Hardware & Marine	3.58		
457825	Sentry Hardware & Marine	4.50		
457862	Sentry Hardware & Marine	80.42		
458429	Sentry Hardware & Marine	68.00		
K58232	Sentry Hardware & Marine	4.89		
9007354240	Society for Human Resource Mgmt	209.00		

# SOUTHEAST ALASKA POWER AGENCY - DISBURSEMENTS

Invoice No.	Company (Vendor)	Revenue Fund	R&R Fund	New Gen
592501	Southeast Auto & Marine Parts, Inc	79.68		
592528	Southeast Auto & Marine Parts, Inc	18.59		
592964	Southeast Auto & Marine Parts, Inc	115.00		
593020	Southeast Auto & Marine Parts, Inc	24.74		
593048	Southeast Auto & Marine Parts, Inc	99.00		
593109	Southeast Auto & Marine Parts, Inc	39.28		
593210	Southeast Auto & Marine Parts, Inc	60.22		
593263	Southeast Auto & Marine Parts, Inc	59.35		
593364	Southeast Auto & Marine Parts, Inc	71.16		
593458	Southeast Auto & Marine Parts, Inc	57.19		
593489	Southeast Auto & Marine Parts, Inc	41.56		
593520	Southeast Auto & Marine Parts, Inc	37.22		
593573	Southeast Auto & Marine Parts, Inc	81.98		
593599	Southeast Auto & Marine Parts, Inc	57.42		
593697	Southeast Auto & Marine Parts, Inc	89.76		
21888	Stikine Auto Works	286.23		
4734	Stikine Inn	264.00		
52874	Sunrise Aviation Inc	5,050.00		
120791	Tempest Telecom Solutions	911.54		
51273025	Tetra Tech Inc	275.40		
21383	TexRus	2,240.00		
21487	TexRus	2,437.20		
21492	TexRus		520.00	
21601	TexRus	2,437.20		
21602	TexRus	-	1,100.00	
21750	TexRus	2,752.17	4,041.06	
21761	TexRus	420.00	500.00	
1078420	Tongass Business Center	195.57		
1078560	Tongass Business Center	79.00		
1081790	Tongass Business Center	87.58		
1088460	Tongass Business Center	178.54		
44591	TSS, Inc.	1,800.00		
45239	TSS, Inc.	1,800.00		
AGRMT18046	US Bureau of Reclamation	47,850.00		
403899	Van Ness Feldman PC	1,360.00		
403901	Van Ness Feldman PC	197.82		
WF09I-201803	Wells Fargo 2009 Interest	25,177.34		
WF09I-201804	Wells Fargo 2009 Interest	25,177.34		
WF09P-201803	Wells Fargo 2009 Principal	66,631.86		
WF09P-201804	Wells Fargo 2009 Principal	66,631.86		
WF15I-201803	Wells Fargo 2015 Interest	40,640.63		
WF15I-201804	Wells Fargo 2015 Interest	40,640.63		
1534541	Wells Fargo Bank MN	2,500.00		
2231	Welsh Whiteley Architects, LLC		387.00	
322	Woffinden, Jeimi	642.00		
INV5467	X2nSat	1,880.19		
INV5401	X2nSat	1,590.00		
INV5583	X2nSat	677.72		
INV5526	X2nSat	1,590.00		
INV5606	X2nSat	1,590.00		
201801	"Bank of America	26,409.12		
201802	"Bank of America	16,633.78	211.85	
201802	Board Member Reimbursement	9.99		
<b>Total Disbursements</b>		<b>\$ 654,509</b>	<b>\$ 37,044</b>	<b>\$ -</b>
		<b>\$691,553.38</b>		

\* Bank of America credit card charges include all travel, most telecom and some utility:  
 ACS, AT&T Mobility, AP&T, GCI, Globalstar, KPU, PSG Borough, Roadpost, Wrangell City & Boro  
 These recurring telecom & utility charges are approximately \$12,000/month.



## SOUTHEAST ALASKA POWER AGENCY

**Date:** April 10, 2018  
**To:** Trey Acteson, Chief Executive Officer  
**From:** Ed Schofield, Power System Specialist  
**Subject:** Swan Lake Marine Bulkhead Rehabilitation Project

A Request for Proposals for the Swan Lake Marine Bulkhead Rehabilitation Project was advertised on March 1, 2018. Two (2) bids were received on March 29, 2018 as follows:

Bidder	City/State	Lump-Sum Bid Amount
Pool Engineering, Inc.	Ketchikan, AK	\$143,500.00
Western Dock and Bridge, LLC	Ketchikan, AK	\$155,500.00

The proposals were primarily evaluated on experience, appropriateness of the proposed general approach to the project, capacity to respond to the work in a timely and efficient manner, competitive pricing, and Contractor's Workmanship Warranty. Based upon the evaluation, staff recommends award of the Swan Lake Marine Bulkhead Rehabilitation Project to POOL ENGINEERING, INC. \$223,000 was authorized in the FY2018 R&R Budget for the project.

Please consider the following suggested motion:

### SUGGESTED MOTION

I move to authorize staff to enter into a Contract with POOL ENGINEERING, INC. for SEAPA's Swan Lake Marine Bulkhead Rehabilitation Project for the lump-sum bid amount of \$143,500.



## SOUTHEAST ALASKA POWER AGENCY

**Date:** April 10, 2018  
**To:** Trey Acteson, Chief Executive Officer  
**From:** Steve Henson, Operations Manager  
**Subject:** Tye Lake ROV Inspection and Analysis of Submarine Cables Project

A Request for Proposals for the Tye Lake ROV Inspection and Analysis of Submarine Cables Project was advertised on March 5, 2018. Three (3) bids were received on April 5, 2018 as follows:

Bidder	City/State	Lump-Sum Bid Amount
ITB Subsea Ltd.	Vancouver, B.C., Canada	\$522,990
R. T. Casey, LLC	Belle Chasse, LA	\$644,000
Global Diving and Salvage, Inc.	Anchorage, AK	\$725,775

The proposals were primarily evaluated on experience with Alaska generally and Southeast Alaska in particular in carrying out similar projects, safety program/record, schedule and capacity to respond to the work in a timely and efficient manner, competitive pricing, and completeness and quality of bid proposal documents. Based upon the evaluation, staff recommends award of the Tye Lake ROV Inspection and Analysis of Submarine Cables Project to ITB SUBSEA, LTD. \$535,000 was authorized in the FY2018 Operating Budget for the project, but work will occur in FY2019.

Please consider the following suggested motion:

SUGGESTED MOTION
<b>I move to authorize staff to enter into a Contract with ITB SUBSEA, LTD. for SEAPA's Tye Lake ROV Inspection and Analysis of Submarine Cables Project for the lump-sum bid amount of \$522,990.</b>





## SOUTHEAST ALASKA POWER AGENCY

**Date:** April 10, 2018  
**To:** Trey Acteson, Chief Executive Officer  
**From:** Ed Schofield, Power System Specialist  
**Subject:** Swan Lake Generating Station Unit #1 and Unit #2 Turbine Runner Cavitation Repair Project

A Request for Proposals for the Swan Lake Generating Station Unit #1 and Unit #2 Turbine Runner Cavitation Repair Project was advertised on March 7, 2018. One (1) bid was received on April 9, 2018 as follows:

Bidder	City/State	Lump-Sum Bid Amount
American Hydro	York, PA	\$177,598

The proposal was primarily evaluated on the overall cost effectiveness of the project and competitive pricing, experience, approach to the work/safety program, proposed schedule, and workmanship warranty. Based upon the evaluation, staff recommends award of the Swan Lake Generating Station Unit #1 and Unit #2 Turbine Runner Cavitation Repair Project to AMERICAN HYDRO. \$400,000 was authorized in the FY2018 R&R Budget for the project.

Please consider the following suggested motion:

### SUGGESTED MOTION

**I move to authorize staff to enter into a Contract with AMERICAN HYDRO for SEAPA's Swan Lake Generating Station Unit #1 and Unit #2 Turbine Runner Cavitation Repair Project for the lump-sum bid amount of \$177,598.**



## SOUTHEAST ALASKA POWER AGENCY

**Date:** April 10, 2018  
**To:** Trey Acteson, Chief Executive Officer  
**From:** Ed Schofield, Power System Specialist  
**Subject:** Tye Lake Hydroelectric Facility Power Tunnel ROV Survey Project

A Request for Proposals for the Tye Power Tunnel ROV Survey Project was advertised on March 8, 2018. Three (3) bids were received on April 6, 2018 as follows:

Bidder	City/State	Lump-Sum Bid Amount
Hibbard Inshore, LLC	Auburn Hills, MI	\$188,269
R. T. Casey, LLC	Belle Chasse, LA	\$784,000
Global Diving & Salvage, Inc.	Anchorage, AK	\$1,681,750

The proposals were primarily evaluated on the overall cost effectiveness of the proposal and competitive pricing, experience with similar tunnel inspection projects, approach to the work, safety plan, and recovery plans for disabled or stuck ROV equipment and the ability to meet the proposal schedule. Based upon the evaluation, staff recommends award of the Tye Power Tunnel ROV Survey Project to HIBBARD INSHORE, LLC. This work is scheduled to coincide with the planned Tye Annual Maintenance Outage prior to the end of FY2018. Funding for this contract will be covered by the \$535,000 set aside for the Submarine Cable Inspection in 564200 of the operating budget. The Submarine Cable Inspection is scheduled to occur in FY2019.

Please consider the following suggested motion:

**SUGGESTED MOTION**

**I move to authorize staff to enter into a Contract with HIBBARD INSHORE, LLC. for SEAPA’s Tye Lake Hydroelectric Facility Power Tunnel ROV Survey Project for the lump-sum bid amount of \$188,269 with 10% contingency to cover additional services, including a ROV site reconnaissance visit for a total of \$207,096.**



## SEAPA 2018 BOARD MEETING DATES

Date(s)	Location	Comments
April 17, 2018 (Tues)	Ketchikan	(Telephonic) Special Board Meeting
June 19-20, 2018 (Tues-Wed)	Wrangell	Split Meeting: Tues 1-5/Wed 9-2
September 27, 2018 (Thurs)	Ketchikan	
December 12-13, 2018 (Wed-Thurs)	Petersburg	Split Meeting: Wed 1-5/Thurs 9-2

### 2018 Calendar

<table border="1" style="width: 100%; border-collapse: collapse; font-size: small;"> <thead> <tr><th colspan="7">January 2018</th></tr> <tr><th>W</th><th>S</th><th>M</th><th>T</th><th>W</th><th>T</th><th>F</th><th>S</th></tr> </thead> <tbody> <tr><td>1</td><td></td><td>1</td><td>2</td><td>3</td><td>4</td><td>5</td><td>6</td></tr> <tr><td>2</td><td>7</td><td>8</td><td>9</td><td>10</td><td>11</td><td>12</td><td>13</td></tr> <tr><td>3</td><td>14</td><td>15</td><td>16</td><td>17</td><td>18</td><td>19</td><td>20</td></tr> <tr><td>4</td><td>21</td><td>22</td><td>23</td><td>24</td><td>25</td><td>26</td><td>27</td></tr> <tr><td>5</td><td>28</td><td>29</td><td>30</td><td>31</td><td></td><td></td><td></td></tr> </tbody> </table>	January 2018							W	S	M	T	W	T	F	S	1		1	2	3	4	5	6	2	7	8	9	10	11	12	13	3	14	15	16	17	18	19	20	4	21	22	23	24	25	26	27	5	28	29	30	31				<table border="1" style="width: 100%; border-collapse: collapse; font-size: small;"> <thead> <tr><th colspan="7">February 2018</th></tr> <tr><th>W</th><th>S</th><th>M</th><th>T</th><th>W</th><th>T</th><th>F</th><th>S</th></tr> </thead> <tbody> <tr><td>5</td><td></td><td></td><td></td><td>1</td><td>2</td><td>3</td><td></td></tr> <tr><td>6</td><td>4</td><td>5</td><td>6</td><td>7</td><td>8</td><td>9</td><td>10</td></tr> <tr><td>7</td><td>11</td><td>12</td><td>13</td><td>14</td><td>15</td><td>16</td><td>17</td></tr> <tr><td>8</td><td>18</td><td>19</td><td>20</td><td>21</td><td>22</td><td>23</td><td>24</td></tr> <tr><td>9</td><td>25</td><td>26</td><td>27</td><td>28</td><td></td><td></td><td></td></tr> </tbody> </table>	February 2018							W	S	M	T	W	T	F	S	5				1	2	3		6	4	5	6	7	8	9	10	7	11	12	13	14	15	16	17	8	18	19	20	21	22	23	24	9	25	26	27	28				<table border="1" style="width: 100%; border-collapse: collapse; font-size: small;"> <thead> <tr><th colspan="7">March 2018</th></tr> <tr><th>W</th><th>S</th><th>M</th><th>T</th><th>W</th><th>T</th><th>F</th><th>S</th></tr> </thead> <tbody> <tr><td>9</td><td></td><td></td><td></td><td>1</td><td>2</td><td>3</td><td></td></tr> <tr><td>10</td><td>4</td><td>5</td><td>6</td><td>7</td><td>8</td><td>9</td><td>10</td></tr> <tr><td>11</td><td>11</td><td>12</td><td>13</td><td>14</td><td>15</td><td>16</td><td>17</td></tr> <tr><td>12</td><td>18</td><td>19</td><td>20</td><td>21</td><td>22</td><td>23</td><td>24</td></tr> <tr><td>13</td><td>25</td><td>26</td><td>27</td><td>28</td><td>29</td><td>30</td><td>31</td></tr> </tbody> </table>	March 2018							W	S	M	T	W	T	F	S	9				1	2	3		10	4	5	6	7	8	9	10	11	11	12	13	14	15	16	17	12	18	19	20	21	22	23	24	13	25	26	27	28	29	30	31	<table border="1" style="width: 100%; border-collapse: collapse; font-size: small;"> <thead> <tr><th colspan="7">April 2018</th></tr> <tr><th>W</th><th>S</th><th>M</th><th>T</th><th>W</th><th>T</th><th>F</th><th>S</th></tr> </thead> <tbody> <tr><td>14</td><td>1</td><td>2</td><td>3</td><td>4</td><td>5</td><td>6</td><td>7</td></tr> <tr><td>15</td><td>8</td><td>9</td><td>10</td><td>11</td><td>12</td><td>13</td><td>14</td></tr> <tr><td>16</td><td>15</td><td>16</td><td>17</td><td>18</td><td>19</td><td>20</td><td>21</td></tr> <tr><td>17</td><td>22</td><td>23</td><td>24</td><td>25</td><td>26</td><td>27</td><td>28</td></tr> <tr><td>18</td><td>29</td><td>30</td><td></td><td></td><td></td><td></td><td></td></tr> </tbody> </table>	April 2018							W	S	M	T	W	T	F	S	14	1	2	3	4	5	6	7	15	8	9	10	11	12	13	14	16	15	16	17	18	19	20	21	17	22	23	24	25	26	27	28	18	29	30																					
January 2018																																																																																																																																																																																																																																															
W	S	M	T	W	T	F	S																																																																																																																																																																																																																																								
1		1	2	3	4	5	6																																																																																																																																																																																																																																								
2	7	8	9	10	11	12	13																																																																																																																																																																																																																																								
3	14	15	16	17	18	19	20																																																																																																																																																																																																																																								
4	21	22	23	24	25	26	27																																																																																																																																																																																																																																								
5	28	29	30	31																																																																																																																																																																																																																																											
February 2018																																																																																																																																																																																																																																															
W	S	M	T	W	T	F	S																																																																																																																																																																																																																																								
5				1	2	3																																																																																																																																																																																																																																									
6	4	5	6	7	8	9	10																																																																																																																																																																																																																																								
7	11	12	13	14	15	16	17																																																																																																																																																																																																																																								
8	18	19	20	21	22	23	24																																																																																																																																																																																																																																								
9	25	26	27	28																																																																																																																																																																																																																																											
March 2018																																																																																																																																																																																																																																															
W	S	M	T	W	T	F	S																																																																																																																																																																																																																																								
9				1	2	3																																																																																																																																																																																																																																									
10	4	5	6	7	8	9	10																																																																																																																																																																																																																																								
11	11	12	13	14	15	16	17																																																																																																																																																																																																																																								
12	18	19	20	21	22	23	24																																																																																																																																																																																																																																								
13	25	26	27	28	29	30	31																																																																																																																																																																																																																																								
April 2018																																																																																																																																																																																																																																															
W	S	M	T	W	T	F	S																																																																																																																																																																																																																																								
14	1	2	3	4	5	6	7																																																																																																																																																																																																																																								
15	8	9	10	11	12	13	14																																																																																																																																																																																																																																								
16	15	16	17	18	19	20	21																																																																																																																																																																																																																																								
17	22	23	24	25	26	27	28																																																																																																																																																																																																																																								
18	29	30																																																																																																																																																																																																																																													
<table border="1" style="width: 100%; border-collapse: collapse; font-size: small;"> <thead> <tr><th colspan="7">May 2018</th></tr> <tr><th>W</th><th>S</th><th>M</th><th>T</th><th>W</th><th>T</th><th>F</th><th>S</th></tr> </thead> <tbody> <tr><td>18</td><td></td><td></td><td>1</td><td>2</td><td>3</td><td>4</td><td>5</td></tr> <tr><td>19</td><td>6</td><td>7</td><td>8</td><td>9</td><td>10</td><td>11</td><td>12</td></tr> <tr><td>20</td><td>13</td><td>14</td><td>15</td><td>16</td><td>17</td><td>18</td><td>19</td></tr> <tr><td>21</td><td>20</td><td>21</td><td>22</td><td>23</td><td>24</td><td>25</td><td>26</td></tr> <tr><td>22</td><td>27</td><td>28</td><td>29</td><td>30</td><td>31</td><td></td><td></td></tr> </tbody> </table>	May 2018							W	S	M	T	W	T	F	S	18			1	2	3	4	5	19	6	7	8	9	10	11	12	20	13	14	15	16	17	18	19	21	20	21	22	23	24	25	26	22	27	28	29	30	31			<table border="1" style="width: 100%; border-collapse: collapse; font-size: small;"> <thead> <tr><th colspan="7">June 2018</th></tr> <tr><th>W</th><th>S</th><th>M</th><th>T</th><th>W</th><th>T</th><th>F</th><th>S</th></tr> </thead> <tbody> <tr><td>22</td><td></td><td></td><td></td><td></td><td>1</td><td>2</td><td></td></tr> <tr><td>23</td><td>3</td><td>4</td><td>5</td><td>6</td><td>7</td><td>8</td><td>9</td></tr> <tr><td>24</td><td>10</td><td>11</td><td>12</td><td>13</td><td>14</td><td>15</td><td>16</td></tr> <tr><td>25</td><td>17</td><td>18</td><td>19</td><td>20</td><td>21</td><td>22</td><td>23</td></tr> <tr><td>26</td><td>24</td><td>25</td><td>26</td><td>27</td><td>28</td><td>29</td><td>30</td></tr> </tbody> </table>	June 2018							W	S	M	T	W	T	F	S	22					1	2		23	3	4	5	6	7	8	9	24	10	11	12	13	14	15	16	25	17	18	19	20	21	22	23	26	24	25	26	27	28	29	30	<table border="1" style="width: 100%; border-collapse: collapse; font-size: small;"> <thead> <tr><th colspan="7">July 2018</th></tr> <tr><th>W</th><th>S</th><th>M</th><th>T</th><th>W</th><th>T</th><th>F</th><th>S</th></tr> </thead> <tbody> <tr><td>27</td><td>1</td><td>2</td><td>3</td><td>4</td><td>5</td><td>6</td><td>7</td></tr> <tr><td>28</td><td>8</td><td>9</td><td>10</td><td>11</td><td>12</td><td>13</td><td>14</td></tr> <tr><td>29</td><td>15</td><td>16</td><td>17</td><td>18</td><td>19</td><td>20</td><td>21</td></tr> <tr><td>30</td><td>22</td><td>23</td><td>24</td><td>25</td><td>26</td><td>27</td><td>28</td></tr> <tr><td>31</td><td>29</td><td>30</td><td>31</td><td></td><td></td><td></td><td></td></tr> </tbody> </table>	July 2018							W	S	M	T	W	T	F	S	27	1	2	3	4	5	6	7	28	8	9	10	11	12	13	14	29	15	16	17	18	19	20	21	30	22	23	24	25	26	27	28	31	29	30	31					<table border="1" style="width: 100%; border-collapse: collapse; font-size: small;"> <thead> <tr><th colspan="7">August 2018</th></tr> <tr><th>W</th><th>S</th><th>M</th><th>T</th><th>W</th><th>T</th><th>F</th><th>S</th></tr> </thead> <tbody> <tr><td>31</td><td></td><td></td><td></td><td>1</td><td>2</td><td>3</td><td>4</td></tr> <tr><td>32</td><td>5</td><td>6</td><td>7</td><td>8</td><td>9</td><td>10</td><td>11</td></tr> <tr><td>33</td><td>12</td><td>13</td><td>14</td><td>15</td><td>16</td><td>17</td><td>18</td></tr> <tr><td>34</td><td>19</td><td>20</td><td>21</td><td>22</td><td>23</td><td>24</td><td>25</td></tr> <tr><td>35</td><td>26</td><td>27</td><td>28</td><td>29</td><td>30</td><td>31</td><td></td></tr> </tbody> </table>	August 2018							W	S	M	T	W	T	F	S	31				1	2	3	4	32	5	6	7	8	9	10	11	33	12	13	14	15	16	17	18	34	19	20	21	22	23	24	25	35	26	27	28	29	30	31																	
May 2018																																																																																																																																																																																																																																															
W	S	M	T	W	T	F	S																																																																																																																																																																																																																																								
18			1	2	3	4	5																																																																																																																																																																																																																																								
19	6	7	8	9	10	11	12																																																																																																																																																																																																																																								
20	13	14	15	16	17	18	19																																																																																																																																																																																																																																								
21	20	21	22	23	24	25	26																																																																																																																																																																																																																																								
22	27	28	29	30	31																																																																																																																																																																																																																																										
June 2018																																																																																																																																																																																																																																															
W	S	M	T	W	T	F	S																																																																																																																																																																																																																																								
22					1	2																																																																																																																																																																																																																																									
23	3	4	5	6	7	8	9																																																																																																																																																																																																																																								
24	10	11	12	13	14	15	16																																																																																																																																																																																																																																								
25	17	18	19	20	21	22	23																																																																																																																																																																																																																																								
26	24	25	26	27	28	29	30																																																																																																																																																																																																																																								
July 2018																																																																																																																																																																																																																																															
W	S	M	T	W	T	F	S																																																																																																																																																																																																																																								
27	1	2	3	4	5	6	7																																																																																																																																																																																																																																								
28	8	9	10	11	12	13	14																																																																																																																																																																																																																																								
29	15	16	17	18	19	20	21																																																																																																																																																																																																																																								
30	22	23	24	25	26	27	28																																																																																																																																																																																																																																								
31	29	30	31																																																																																																																																																																																																																																												
August 2018																																																																																																																																																																																																																																															
W	S	M	T	W	T	F	S																																																																																																																																																																																																																																								
31				1	2	3	4																																																																																																																																																																																																																																								
32	5	6	7	8	9	10	11																																																																																																																																																																																																																																								
33	12	13	14	15	16	17	18																																																																																																																																																																																																																																								
34	19	20	21	22	23	24	25																																																																																																																																																																																																																																								
35	26	27	28	29	30	31																																																																																																																																																																																																																																									
<table border="1" style="width: 100%; border-collapse: collapse; font-size: small;"> <thead> <tr><th colspan="7">September 2018</th></tr> <tr><th>W</th><th>S</th><th>M</th><th>T</th><th>W</th><th>T</th><th>F</th><th>S</th></tr> </thead> <tbody> <tr><td>35</td><td></td><td></td><td></td><td></td><td></td><td></td><td>1</td></tr> <tr><td>36</td><td>2</td><td>3</td><td>4</td><td>5</td><td>6</td><td>7</td><td>8</td></tr> <tr><td>37</td><td>9</td><td>10</td><td>11</td><td>12</td><td>13</td><td>14</td><td>15</td></tr> <tr><td>38</td><td>16</td><td>17</td><td>18</td><td>19</td><td>20</td><td>21</td><td>22</td></tr> <tr><td>39</td><td>23</td><td>24</td><td>25</td><td>26</td><td>27</td><td>28</td><td>29</td></tr> <tr><td>40</td><td>30</td><td></td><td></td><td></td><td></td><td></td><td></td></tr> </tbody> </table>	September 2018							W	S	M	T	W	T	F	S	35							1	36	2	3	4	5	6	7	8	37	9	10	11	12	13	14	15	38	16	17	18	19	20	21	22	39	23	24	25	26	27	28	29	40	30							<table border="1" style="width: 100%; border-collapse: collapse; font-size: small;"> <thead> <tr><th colspan="7">October 2018</th></tr> <tr><th>W</th><th>S</th><th>M</th><th>T</th><th>W</th><th>T</th><th>F</th><th>S</th></tr> </thead> <tbody> <tr><td>40</td><td></td><td>1</td><td>2</td><td>3</td><td>4</td><td>5</td><td>6</td></tr> <tr><td>41</td><td>7</td><td>8</td><td>9</td><td>10</td><td>11</td><td>12</td><td>13</td></tr> <tr><td>42</td><td>14</td><td>15</td><td>16</td><td>17</td><td>18</td><td>19</td><td>20</td></tr> <tr><td>43</td><td>21</td><td>22</td><td>23</td><td>24</td><td>25</td><td>26</td><td>27</td></tr> <tr><td>44</td><td>28</td><td>29</td><td>30</td><td>31</td><td></td><td></td><td></td></tr> </tbody> </table>	October 2018							W	S	M	T	W	T	F	S	40		1	2	3	4	5	6	41	7	8	9	10	11	12	13	42	14	15	16	17	18	19	20	43	21	22	23	24	25	26	27	44	28	29	30	31				<table border="1" style="width: 100%; border-collapse: collapse; font-size: small;"> <thead> <tr><th colspan="7">November 2018</th></tr> <tr><th>W</th><th>S</th><th>M</th><th>T</th><th>W</th><th>T</th><th>F</th><th>S</th></tr> </thead> <tbody> <tr><td>44</td><td></td><td></td><td></td><td></td><td>1</td><td>2</td><td>3</td></tr> <tr><td>45</td><td>4</td><td>5</td><td>6</td><td>7</td><td>8</td><td>9</td><td>10</td></tr> <tr><td>46</td><td>11</td><td>12</td><td>13</td><td>14</td><td>15</td><td>16</td><td>17</td></tr> <tr><td>47</td><td>18</td><td>19</td><td>20</td><td>21</td><td>22</td><td>23</td><td>24</td></tr> <tr><td>48</td><td>25</td><td>26</td><td>27</td><td>28</td><td>29</td><td>30</td><td></td></tr> </tbody> </table>	November 2018							W	S	M	T	W	T	F	S	44					1	2	3	45	4	5	6	7	8	9	10	46	11	12	13	14	15	16	17	47	18	19	20	21	22	23	24	48	25	26	27	28	29	30		<table border="1" style="width: 100%; border-collapse: collapse; font-size: small;"> <thead> <tr><th colspan="7">December 2018</th></tr> <tr><th>W</th><th>S</th><th>M</th><th>T</th><th>W</th><th>T</th><th>F</th><th>S</th></tr> </thead> <tbody> <tr><td>48</td><td></td><td></td><td></td><td></td><td></td><td></td><td>1</td></tr> <tr><td>49</td><td>2</td><td>3</td><td>4</td><td>5</td><td>6</td><td>7</td><td>8</td></tr> <tr><td>50</td><td>9</td><td>10</td><td>11</td><td>12</td><td>13</td><td>14</td><td>15</td></tr> <tr><td>51</td><td>16</td><td>17</td><td>18</td><td>19</td><td>20</td><td>21</td><td>22</td></tr> <tr><td>52</td><td>23</td><td>24</td><td>25</td><td>26</td><td>27</td><td>28</td><td>29</td></tr> <tr><td>1</td><td>30</td><td>31</td><td></td><td></td><td></td><td></td><td></td></tr> </tbody> </table>	December 2018							W	S	M	T	W	T	F	S	48							1	49	2	3	4	5	6	7	8	50	9	10	11	12	13	14	15	51	16	17	18	19	20	21	22	52	23	24	25	26	27	28	29	1	30	31					
September 2018																																																																																																																																																																																																																																															
W	S	M	T	W	T	F	S																																																																																																																																																																																																																																								
35							1																																																																																																																																																																																																																																								
36	2	3	4	5	6	7	8																																																																																																																																																																																																																																								
37	9	10	11	12	13	14	15																																																																																																																																																																																																																																								
38	16	17	18	19	20	21	22																																																																																																																																																																																																																																								
39	23	24	25	26	27	28	29																																																																																																																																																																																																																																								
40	30																																																																																																																																																																																																																																														
October 2018																																																																																																																																																																																																																																															
W	S	M	T	W	T	F	S																																																																																																																																																																																																																																								
40		1	2	3	4	5	6																																																																																																																																																																																																																																								
41	7	8	9	10	11	12	13																																																																																																																																																																																																																																								
42	14	15	16	17	18	19	20																																																																																																																																																																																																																																								
43	21	22	23	24	25	26	27																																																																																																																																																																																																																																								
44	28	29	30	31																																																																																																																																																																																																																																											
November 2018																																																																																																																																																																																																																																															
W	S	M	T	W	T	F	S																																																																																																																																																																																																																																								
44					1	2	3																																																																																																																																																																																																																																								
45	4	5	6	7	8	9	10																																																																																																																																																																																																																																								
46	11	12	13	14	15	16	17																																																																																																																																																																																																																																								
47	18	19	20	21	22	23	24																																																																																																																																																																																																																																								
48	25	26	27	28	29	30																																																																																																																																																																																																																																									
December 2018																																																																																																																																																																																																																																															
W	S	M	T	W	T	F	S																																																																																																																																																																																																																																								
48							1																																																																																																																																																																																																																																								
49	2	3	4	5	6	7	8																																																																																																																																																																																																																																								
50	9	10	11	12	13	14	15																																																																																																																																																																																																																																								
51	16	17	18	19	20	21	22																																																																																																																																																																																																																																								
52	23	24	25	26	27	28	29																																																																																																																																																																																																																																								
1	30	31																																																																																																																																																																																																																																													

[www.blankcalendar2018.com](http://www.blankcalendar2018.com)

(See attached for additional information on 2018 meeting dates and events)

# 2018 MEETING DATES | EVENTS

DATE	ORGANIZATION	EVENT   LOCATION
<b>JANUARY</b>		
1	SEAPA	HOLIDAY – New Year’s Day
2	Petersburg Borough Assembly Meeting*	Petersburg
4	Ketchikan City Council Meeting*	Ketchikan
9	City & Borough of Wrangell Assembly Meeting*	Wrangell
15	Petersburg Borough Assembly Meeting*	Petersburg
18	Ketchikan City Council Meeting*	Ketchikan
23	City & Borough of Wrangell Assembly Meeting*	Wrangell
30 – Feb 1	Alaska Power Association (APA)	Managers’ Mtg & Legislative Conf - Juneau
<b>FEBRUARY</b>		
1	Ketchikan City Council Meeting*	Ketchikan
5	Petersburg Borough Assembly Meeting*	Petersburg
8	<b>SEAPA BOARD MEETING</b>	<b>Ketchikan</b>
13	City & Borough of Wrangell Assembly Meeting*	Wrangell
13-14	Southeast Conference Mid-Session Summit	Juneau
15	Ketchikan City Council Meeting*	Ketchikan
19	SEAPA	HOLIDAY – Presidents’ Day
20	Petersburg Borough Assembly Meeting*	Petersburg
20-23	Northwest Hydroelectric Association (NWEA)	Annual Conference & FERC Mtg. – Portland
27	City & Borough of Wrangell Assembly Meeting*	Wrangell
<b>MARCH</b>		
1	Ketchikan City Council Meeting*	Ketchikan
5	Petersburg Borough Assembly Meeting*	Petersburg
13	City & Borough of Wrangell Assembly Meeting*	Wrangell
15	Ketchikan City Council Meeting*	Ketchikan
19	Petersburg Borough Assembly Meeting*	Petersburg
27	City & Borough of Wrangell Assembly Meeting*	Wrangell
<b>APRIL</b>		
2	Petersburg Borough Assembly Meeting*	Petersburg
5	Ketchikan City Council Meeting*	Ketchikan
10	City & Borough of Wrangell Assembly Meeting*	Wrangell
16	Petersburg Borough Assembly Meeting*	Petersburg
17	<b>SEAPA SPECIAL BOARD MEETING (Telephonic)</b>	<b>Ketchikan</b>
19	Ketchikan City Council Meeting*	Ketchikan
23-27	NRECA CFPC Course (Unit 1)	Madison, Wisconsin
24	City & Borough of Wrangell Assembly Meeting*	Wrangell
30 – May 2	National Hydropower Association (NHA)	Annual Conference / Water Week – D.C.
<b>MAY</b>		
3	Ketchikan City Council Meeting*	Ketchikan
7	Petersburg Borough Assembly Meeting*	Petersburg
8	City & Borough of Wrangell Assembly Meeting*	Wrangell
14-16	Northwest Hydroelectric Association (NWEA)	Strategic Planning Meeting – Seattle
17	Ketchikan City Council Meeting*	Ketchikan
20-23	Northwest Public Power Association (NWPPA)	Annual Meeting – Boise
21	Petersburg Borough Assembly Meeting*	Petersburg
22	City & Borough of Wrangell Assembly Meeting*	Wrangell
28	SEAPA	HOLIDAY – Memorial Day

<b>JUNE</b>		
4	Petersburg Borough Assembly Meeting*	Petersburg
5-7	APA Federal Legislative Conference	Washington, D.C.
7	Ketchikan City Council Meeting*	Ketchikan
12	City & Borough of Wrangell Assembly Meeting*	Wrangell
18	Petersburg Borough Assembly Meeting*	Petersburg
<b>19-20</b>	<b>SEAPA BOARD MEETING</b>	<b>Wrangell</b>
21	Ketchikan City Council Meeting*	Ketchikan
26	City & Borough of Wrangell Assembly Meeting	Wrangell
26-29	HydroVision International	Conference – Charlotte
<b>JULY</b>		
2	Petersburg Borough Assembly Meeting*	Petersburg
4	SEAPA	HOLIDAY – Independence Day
5	Ketchikan City Council Meeting*	Ketchikan
9-13	NRECA CFPC Course (Unit 2)	Dulles, Virginia
10	City & Borough of Wrangell Assembly Meeting*	Wrangell
16	Petersburg Borough Assembly Meeting*	Petersburg
16-19	AEGIS	Policyholders Conference – Chicago
19	Ketchikan City Council Meeting*	Ketchikan
24	City & Borough of Wrangell Assembly Meeting*	Wrangell
<b>AUGUST</b>		
2	Ketchikan City Council Meeting*	Ketchikan
6	Petersburg Borough Assembly Meeting*	Petersburg
14	City & Borough of Wrangell Assembly Meeting*	Wrangell
16	Ketchikan City Council Meeting*	Ketchikan
20	Petersburg Borough Assembly Meeting*	Petersburg
21-24	Alaska Power Association (APA)	Annual Meeting – Fairbanks
28	City & Borough of Wrangell Assembly Meeting*	Wrangell
<b>SEPTEMBER</b>		
3	SEAPA	HOLIDAY – Labor Day
4	Petersburg Borough Assembly Meeting*	Petersburg
6	Ketchikan City Council Meeting*	Ketchikan
11	National Hydropower Association (NHA)	Annual Meeting – Ketchikan
12-14	Southeast Conference	Annual Meeting – Ketchikan
11	City & Borough of Wrangell Assembly Meeting*	Wrangell
17	Petersburg Borough Assembly Meeting*	Petersburg
20	Ketchikan City Council Meeting*	Ketchikan
25	City & Borough of Wrangell Assembly Meeting*	Wrangell
<b>27</b>	<b>SEAPA BOARD MEETING</b>	<b>Ketchikan</b>
<b>OCTOBER</b>		
1	Petersburg Borough Assembly Meeting*	Petersburg
4	Ketchikan City Council Meeting*	Ketchikan
9	City & Borough of Wrangell Assembly Meeting*	Wrangell
11-12	APA Accounting & Finance Workshop	Anchorage
15	Petersburg Borough Assembly Meeting*	Petersburg
18	Ketchikan City Council Meeting*	Ketchikan
23	City & Borough of Wrangell Assembly Meeting*	Wrangell
?	SEAPA Annual Audit	Ketchikan



<b>NOVEMBER</b>		
1	Ketchikan City Council Meeting*	Ketchikan
5	Petersburg Borough Assembly Meeting*	Petersburg
12	SEAPA	HOLIDAY – Veterans’ Day - Observed
13	City & Borough of Wrangell Assembly Meeting*	Wrangell
15	Ketchikan City Council Meeting*	Ketchikan
19	Petersburg Borough Assembly Meeting*	Petersburg
22-23	SEAPA	HOLIDAY – Thanksgiving & Day After
27	City & Borough of Wrangell Assembly Meeting*	Wrangell
<b>DECEMBER</b>		
3	Petersburg Borough Assembly Meeting*	Petersburg
6	Ketchikan City Council Meeting*	Ketchikan
11	City & Borough of Wrangell Assembly Meeting*	Wrangell
12-13	APA December Meeting Series	Anchorage
<b>12-13</b>	<b>SEAPA BOARD MEETING</b>	<b>Petersburg</b>
17	Petersburg Borough Assembly Meeting*	Petersburg
20	City of Ketchikan Council Meeting*	Ketchikan
24-25	SEAPA	HOLIDAY – Christmas Eve & Christmas Day

\*Please note that the Assembly and Council meetings noted on the calendar are estimated as a result of the schedule below.

- Petersburg Borough Assembly                      1st & 3rd Monday every month
- City & Borough of Wrangell Assembly              2nd & 4th Tuesday every month
- Ketchikan City Council                                      1st & 3rd Thursday every month